

FIG. 2

-A: ALIGNMENT PIN OPTION (MOLDED)  
DIFFERENT AS SHOWN. OTHERWISE SAME AS FIG. 1.

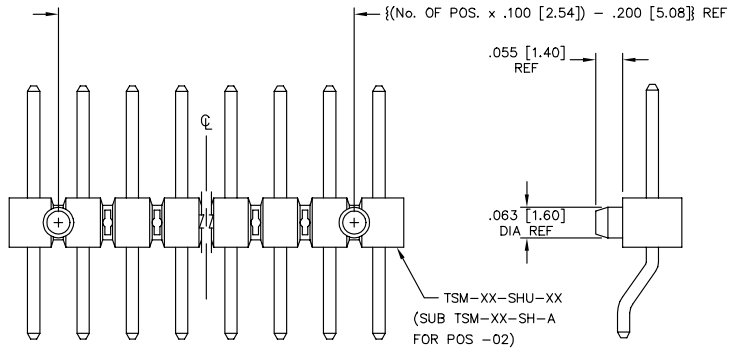


FIG. 4

-A: ALIGNMENT PIN OPTION (STAKED)  
DIFFERENT AS SHOWN. OTHERWISE SAME AS FIG. 1.

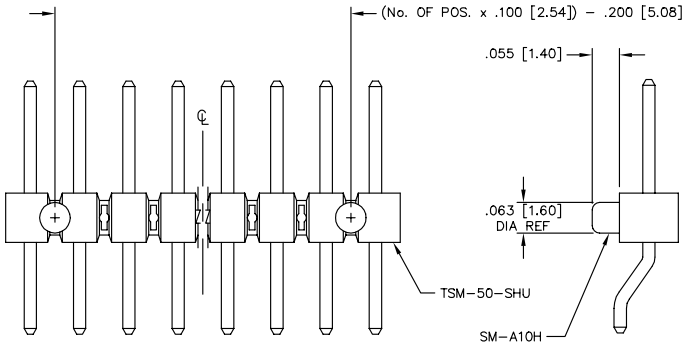
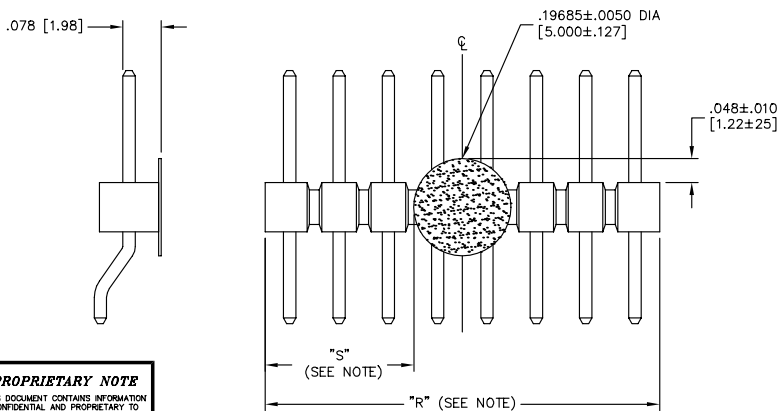


FIG. 6

-K POLYIMIDE FILM PAD



NOTE:

"R" = USED MEASURED DIMENSIONS (REF)

"S" =  $\{("R" - .1969 [5.000]) / 2\} \pm .020 [5.1]$

**PROPRIETARY NOTE**  
THIS DOCUMENT CONTAINS INFORMATION  
CONFIDENTIAL AND PROPRIETARY TO  
SAMTEC INC. AND SHALL NOT BE  
REPRODUCED OR TRANSFERRED TO  
OTHER DOCUMENTS OR DISCLOSED TO  
OTHERS OR USED FOR ANY PURPOSE  
OTHER THAN THAT FOR WHICH IT WAS  
OBTAINED WITHOUT THE EXPRESSED  
WRITTEN CONSENT OF SAMTEC INC.

UNLESS OTHERWISE NOTED  
DIMENSIONS ARE IN INCHES

TOLERANCES ARE:

ONE PLACE DECIMALS  $\pm .1 [3]$

THREE PLACE DECIMALS  $\pm .005 [.13]$

ANGLES  $\pm 2^\circ$

TWO PLACE DECIMALS  $\pm .01 [.25]$

FOUR PLACE DECIMALS  $\pm .0020 [.051]$

TITLE:

TERMINAL STRIP  
SINGLE SURFACE MOUNT

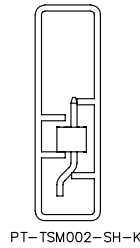
DWG NO:

TSM-1XX-XX-XXX-SH-XX-XXX-XX

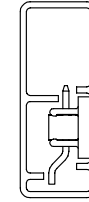
SHEET 2 OF 2

FIG. 5

PACKAGING



PT-TSM002-SH-K



PT-TSM003-SH-P

NOTE: PACKAGE POSITIONS -03 THRU -36 IN TUBES;  
LAYER PACKAGE POSITION 02.

PACKAGING TABLE

LEAD STYLE	OPTION	TUBE	PLUG
01, 02, 04	-NONE	PT-TSM002-SH-K	TP-24
01, 02, 04	-LC, -A	PT-TSM002-SH-K	TP-24
01	-K	PT-TSM002-SH-K	TP-24
01	-P, -A-K	PT-TSM003-SH-P	TP-24
02, 04	-K, A-K, -LC-K	PT-TSM002-SH-K	TP-24
01	-A-P, -LC-P	PT-TSM003-SH-P	TP-24
02	-LC-P, -A-P, -P	PT-TSM003-SH-P	TP-24
04	-LC-P, -A-P, -P	PT-TSM003-SH-P	TP-24
03	-NONE	PT-TSM002-SH-K	TP-24
03	-LC, -A	PT-TSM002-SH-K	TP-24
03	-P	PT-TSM003-SH-P	TP-24
03	-LC-P, -A-P	PT-TSM003-SH-P	TP-24
02	-LC-A-K	PT-TSM002-SH-K	TP-24
01	-LC-K, -A-K	PT-TSM002-SH-K	TP-24

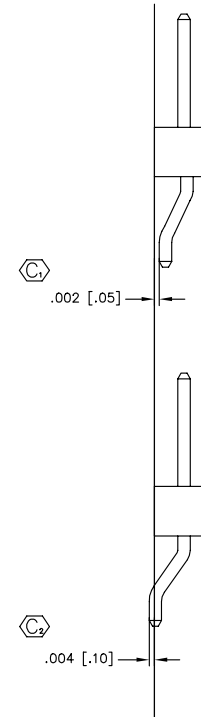


FIG. 7

-SH SURFACEMOUNT DIAGRAM

**samtec**

EXISPROD\ASSEMBLY\100  
TSMHAM2

520 PARK EAST BLVD. NEW ALBANY, INDIANA 47150  
PHONE (812) 944-6733 P.O. BOX 1147  
CODE 55322

MADE BY:

REIDINGER 7-19-91

TSM-1XX-XX-XXX-SH-XX-XXX-XX

SHEET 2 OF 2