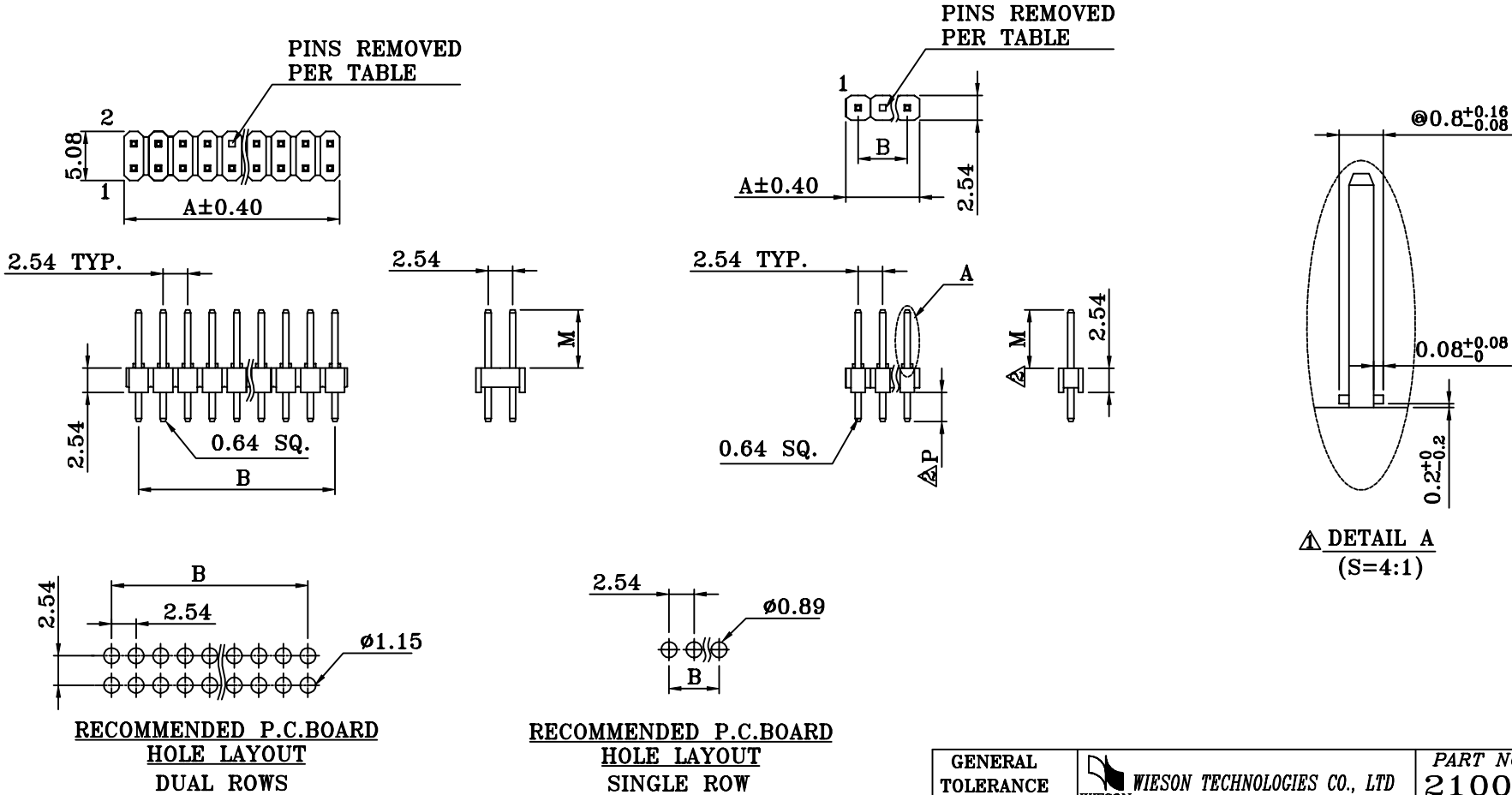


2100 SERIES PIN HEADER 2.54x2.54mm STRAIGHT TYPE

MATERIAL:

Housing: Thermoplastic (UL94V-0)  
Housing Color: See Table  
Terminal: Copper Alloy  
Terminal Plated: Optional Gold over 50u” min.  
Ni underplated overall. (See Table)

REV	DATE	DESCRIPTION	ECN NO.	NAME
A	00.03.06	NEW RELEASE		ROSY
Q	03.09.09	ADD PRODUCT TYPE	AK0309006	LMG
R	03.11.11	ADD PRODUCT TYPE	AK0311010	PETER
S	03.11.11	MODIFY SPEC	TECR03000935	PETER
T	04.03.16	ADD PRODUCT TYPE	TECR04001063	XZ
U	04.04.14	ADD PRODUCT TYPE	TECR04001090	XZ
V	04.07.07	ADD PRODUCT TYPE	TECR04001157	XZ
W	04.07.14	ADD PRODUCT TYPE	TECR04001160	XZ
X	04.07.30	ADD PRODUCT TYPE	TECR04001165	JOY
Y	04.08.02	MODIFY	TECR04001166	WSANMIN
Z	04.08.13	MODIFY	TECR04001173	JOY



NOTE: 1.P.C.B LAYOUT TOLERANCE:  $\pm 0.05\text{mm}$

GENERAL TOLERANCE $\pm 0.25\text{mm}$ GENERAL ANGLE TOLERANCE $\pm 3^\circ$	WIESON TECHNOLOGIES CO., LTD		PART NO.: 2100C888-XXX	
	DRAWN BY	ROSY(WSC)	DRAWING NO.	2100C888-XXX
	CHECKED BY	JIMMY	DRAWING SIZE	A3
	APPROVED BY	KEVIN	UNIT	mm
	SORTING NO.	WSC	PAGE	1 OF 4

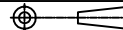

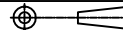
ISSUED

[ ARTICLE: 044033 V3 ]

	DASH#	NUMBER OF POSITIONS	A DIMENSION	B DIMENSION	△ M DIMENSION	△ P DIMENSION	PINS REMOVED	PLATED	HOUSING COLOR
△	001	1*3	7.62	5.08	6.00	2.54	NONE	1u"Au	BLACK
△	002	1*3	7.62	5.08	6.00	2.54	2	1u"Au	BLACK
△	003	2*5	12.7	10.16	6.00	2.54	10	1u"Au	BLACK
△	004	2*9	22.86	20.32	6.00	2.54	1 , 5	1u"Au	BLACK
△	005	2*8	20.32	17.78	6.00	2.54	7	1u"Au	BLACK
△	006	2*8	20.32	17.78	6.00	2.54	4 , 7	1u"Au	BLACK
△	007	2*9	22.86	20.32	6.00	2.54	14	1u"Au	BLACK
△	008	2*5	12.7	10.16	6.00	2.54	6	1u"Au	BLACK
△	009	2*8	20.32	17.78	6.00	2.54	14	1u"Au	BLACK
△	010	2*7	17.78	15.24	6.00	2.54	6	1u"Au	BLACK
△	011	2*13	33.02	30.48	6.00	2.54	1	1u"Au	BLACK
△	012	2*13	33.02	30.48	6.00	2.54	20	1u"Au	BLACK
△	013	2*13	33.02	30.48	6.00	2.54	23	1u"Au	BLACK
△	014	2*7	17.78	15.24	6.00	2.54	6,7,10	1u"Au	BLACK
△	015	2*13	33.02	30.48	6.00	2.54	1,24	1u"Au	BLACK
△	016	2*17	43.18	40.64	6.00	2.54	5	1u"Au	BLACK
△	017	2*20	50.8	48.26	6.00	2.54	20	1u"Au	BLACK
△	018	2*13	33.02	30.48	6.00	2.54	25	1u"Au	BLACK
△	019	2*4	10.16	7.62	6.00	2.54	1	1u"Au	BLACK
△	020	2*4	10.16	7.62	6.00	2.54	5	1u"Au	BLACK
△	021	2*7	17.78	15.24	6.00	2.54	3	1u"Au	BLACK
△	022	2*7	17.78	15.24	6.00	2.54	2	1u"Au	BLACK
△	023	2*8	20.32	17.78	6.00	2.54	16	1u"Au	BLACK
△	024	2*8	20.32	17.78	6.00	2.54	13	1u"Au	BLACK
△	025	2*10	25.4	22.86	6.00	2.54	4,14,19	1u"Au	BLACK
△	026	2*3	7.62	5.08	6.00	2.54	3	1u"Au	BLACK
△	027	2*20	50.8	48.26	6.00	2.54	25,27,28	1u"Au	BLACK
△	028	2*26	66.04	63.5	6.00	2.54	7	1u"Au	BLACK
△	029	2*13	33.02	30.48	6.00	2.54	26	1u"Au	BLACK
△	030	2*27	68.58	66.04	6.00	2.54	7,8,15,16,23,24,31,32,39,40,47	1u"Au	BLACK
△	031	2*17	43.18	40.64	6.00	2.54	16,17,18,24	1u"Au	BLACK
△	032	2*3	7.62	5.08	6.00	2.54	1	1u"Au	BLACK
△	033	2*8	20.32	17.78	6.00	2.54	2,11,12,16	1u"Au	BLACK
△	034	2*10	25.4	22.86	6.00	2.54	4	1u"Au	BLACK
△	035	2*2	5.08	2.54	6.00	2.54	4	1u"Au	BLACK

REV	DATE	DESCRIPTION	ECN NO.	NAME
A	00.03.06	NEW RELEASE		ROSY
Q	03.09.09	△ADD PRODUCT TYPE	AK0309006	LMG
R	03.11.11	△ADD PRODUCT TYPE	AK0311010	PETER
S	03.11.11	△ MODIFY SPEC	TECR03000935	PETER
T	04.03.16	△ADD PRODUCT TYPE	TECR04001063	XZ
U	04.04.14	△ADD PRODUCT TYPE	TECR04001090	XZ
V	04.07.07	△ADD PRODUCT TYPE	TECR04001157	XZ
W	04.07.14	△ADD PRODUCT TYPE	TECR04001160	XZ
X	04.07.30	△ADD PRODUCT TYPE	TECR04001165	JOY
Y	04.08.02	△ MODIFY	TECR04001166	WSANMIN
Z	04.08.13	△ MODIFY	TECR04001173	JOY

	DASH#	NUMBER OF POSITIONS	A DIMENSION	B DIMENSION	△ M DIMENSION	△ P DIMENSION	PINS REMOVED	PLATED	HOUSING COLOR
△	036	2*13	33.02	30.48	6.00	2.54	2,5,8,10	1u"Au	BLACK
△	037	2*17	43.18	40.64	6.00	2.54	9,10	1u"Au	BLACK
△	038	2*17	43.18	40.64	6.00	2.54	17,24	1u"Au	BLACK
△	039	2*17	43.18	40.64	6.00	2.54	17,30	1u"Au	BLACK
△	040	2*17	43.18	40.64	6.00	2.54	25,27,28	1u"Au	BLACK
△	041	2*17	43.18	40.64	6.00	2.54	27,28	1u"Au	BLACK
△	042	2*5	12.7	10.16	6.00	2.54	8	1u"Au	BLACK
△	043	2*8	20.32	17.78	6.00	2.54	2	1u"Au	BLACK
△	044	2*17	43.18	40.64	6.00	2.54	17	1u"Au	BLACK
△	045	2*5	12.7	10.16	6.00	2.54	2	1u"Au	BLACK
△	046	2*31	78.74	76.2	6.00	2.54	NONE	1u"Au	BLACK
△	047	2*15	38.1	35.56	6.00	2.54	7,8,15,16,23,24	1u"Au	BLACK
△	048	2*7	17.78	15.24	6.00	2.54	14	1u"Au	BLACK
△	049	2*3	7.62	5.08	6.00	2.54	NONE	1u"Au	BLACK
△	050	1*4	10.16	7.62	6.00	2.54	NONE	1u"Au	BLACK
△ △	051	1*2	5.08	2.54	6.00	2.54	NONE	1u"Au	BLACK
△ △	052	2*8	20.32	17.78	6.00	2.54	10,14	1u"Au	BLACK
△ △	053	1*8	20.32	17.78	6.00	2.54	4	1u"Au	BLACK
△ △	054	2*4	10.16	7.62	6.00	2.54	NONE	1u"Au	BLACK
△ △	055	2*2	5.08	2.54	6.00	2.54	NONE	1u"Au	BLACK

<div>GENERAL TOLERANCE ±0.25mm</div> <div>GENERAL ANGLE TOLERANCE ±3°</div> <div></div>	<div> WIESON TECHNOLOGIES CO., LTD</div>		<div>PART NO.: 2100C888-XXX</div>		
	DRAWN BY	ROSY(WSC)	DRAWING NO.	2100C888-XXX	
	CHECKED BY	JIMMY	DRAWING SIZE		A3
	APPROVED BY	KEVIN	UNIT	mm	
		SORTING NO.	WSC	PAGE	2 OF 4

ISSUED

[ ARTICLE: 044033 V3]



	DASH#	NUMBER OF POSITIONS	A DIMENSION	B DIMENSION	△ M DIMENSION	△ P DIMENSION	PINS REMOVED	PLATED	HOUSING COLOR
△6	104	1*4	10.16	7.62	6.00	3.00	NONE	1u"Au	BLACK
△6	105	1*2	5.08	2.54	6.00	3.00	NONE	1u"Au	BLACK
△6	106	2*8	20.32	17.78	6.00	3.00	10,14	1u"Au	BLACK
△6	107	2*10	25.4	22.86	6.00	3.00	10	1u"Au	BLACK
△6	108	2*5	12.7	10.16	6.00	3.00	4,7	1u"Au	BLACK
△6	109	1*5	12.7	10.16	6.00	3.00	2	1u"Au	BLACK
△6	110	2*7	17.78	15.24	6.00	3.00	13	1u"Au	BLACK
△6	111	2*3	7.62	5.08	6.00	3.00	2	1u"Au	BLACK
△6	112	2*8	20.32	17.78	6.00	3.00	8,16	1u"Au	BLACK
△6	113	2*5	12.7	10.16	6.00	3.00	2	1u"Au	WHITE
△6	114	2*5	12.7	10.16	6.00	3.00	2	1u"Au	BLUE(301C)
△6	115	2*5	12.7	10.16	6.00	3.00	10	1u"Au	WHITE
△7	116	2*7	17.78	15.24	8.08	3.00	NONE	15u"Au	BLACK
△7	117	PARTICULAR SPEC							
△7	118	2*3	7.62	5.08	6.00	3.00	1	1u"Au	BLACK
△7	119	2*8	20.32	17.78	6.00	3.00	12	1u"Au	BLACK
△7	120	2*12	30.48	27.94	6.00	2.54	NONE	15u"Au	BLACK
△9 △7	121	PARTICULAR SPEC(2100-003 WITH COLOR LABEL)							
△7	122	2*12	30.48	27.94	6.00	3.00	NONE	15u"Au	BLACK
△9 △8	123	2*5	12.7	10.16	6.00	2.54	8	1u"Au	YELLOW
△8	124	1*6	15.24	12.7	6.00	2.54	3	1u"Au	BLACK
△20	125	1*2	5.08	2.54	6.00	3.00	NONE	15u"Au	BLACK
△20	126	1*6	15.24	12.7	6.00	3.00	NONE	15u"Au	BLACK
△20	127	2*5	12.7	10.16	6.00	2.54	2	1u"Au	YELLOW
△20	128	1*3	7.62	5.08	6.00	2.54	3	1u"Au	BLACK
△20	129	2*5	12.7	10.16	6.00	2.54	9 , 10	1u"Au	BLACK
△20	130	2*7	17.78	15.24	6.00	2.54	10	1u"Au	BLACK
△20	131	2*5	12.7	10.16	6.00	2.54	7 , 8	1u"Au	BLACK
△21	132	2*6	15.24	12.7	6.00	2.54	11	1u"Au	BLACK
△21	133	2*5	12.7	10.16	6.00	2.54	10	1u"Au	YELLOW
△22	134	2*5	12.7	10.16	6.00	2.54	2	1u"Au	GREEN(355C)
△22	135	1*5	12.7	10.16	6.00	2.54	2	1u"Au	YELLOW
△22	136	2*5	12.7	10.16	6.00	2.54	8	1u"Au	GREEN(355C)

REV	DATE	DESCRIPTION	ECN NO.	NAME
A	00.03.06	NEW RELEASE		ROSY
Q	03.09.09	△ADD PRODUCT TYPE	AK0309006	LMG
R	03.11.11	△ADD PRODUCT TYPE	AK0311010	PETER
S	03.11.11	△MODIFY SPEC	TECR03000935	PETER
T	04.03.16	△ADD PRODUCT TYPE	TECR04001063	XZ
U	04.04.14	△ADD PRODUCT TYPE	TECR04001090	XZ
V	04.07.07	△ADD PRODUCT TYPE	TECR04001157	XZ
W	04.07.14	△ADD PRODUCT TYPE	TECR04001160	XZ
X	04.07.30	△ADD PRODUCT TYPE	TECR04001165	JOY
Y	04.08.02	△MODIFY	TECR04001166	WSANMIN
Z	04.08.13	△MODIFY	TECR04001173	JOY

DASH#	NUMBER OF POSITIONS	A DIMENSION	B DIMENSION	△ M DIMENSION	△ P DIMENSION	PINS REMOVED	PLATED	HOUSING COLOR
△137	2*7	17.78	15.24	6.00	2.54	9,13	1u"Au	BLACK
△138	2*5	12.7	10.16	6.00	2.54	9,10	1u"Au	BLUE(301C)
△139	PARTICULAR SPEC (2100C888-139 WITH COLOR LABEL)							
△△140	2*5	12.7	10.16	6.55	2.54	△5	1u"Au	BLACK
△141	2*8	20.32	17.78	6.55	2.54	△12	1u"Au	BLACK

GENERAL TOLERANCE ±0.25mm GENERAL ANGLE TOLERANCE ±3° 	WIESON TECHNOLOGIES CO., LTD		PART NO.: <b>2100C888-XXX</b>		
	DRAWN BY	ROSY(WSC)	DRAWING NO.	2100C888-XXX	
	CHECKED BY	JIMMY	DRAWING SIZE		A3
	APPROVED BY	KEVIN	UNIT	mm	
	SORTING NO.	WSC	PAGE	4 OF 4	

ISSUED

[ ARTICLE: 044033 V3]