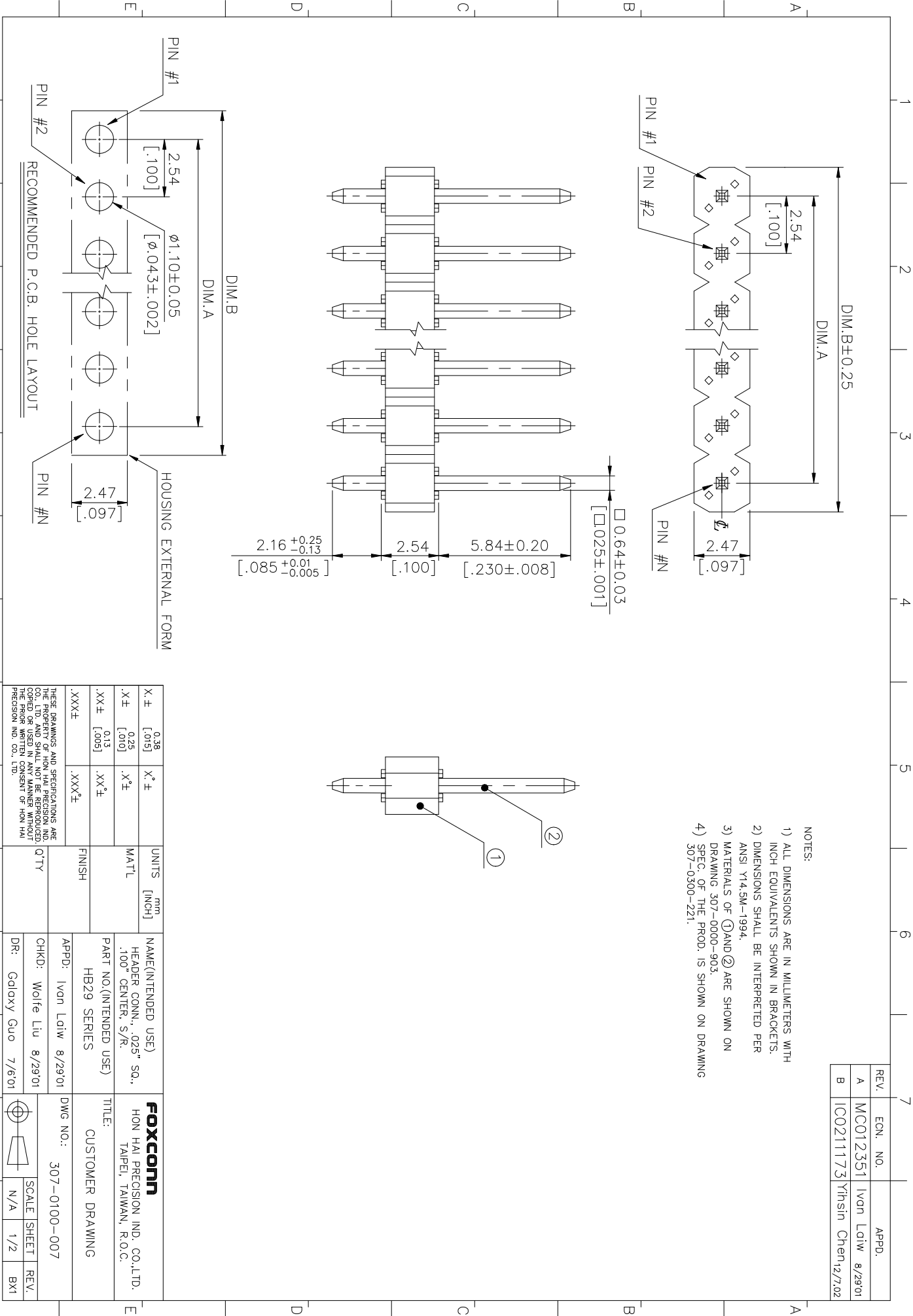
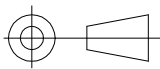


REV.	ECN. NO.	APPD.
A	MC012351	Ivan Laiw 8/29/01
B	IC0211173	Yhsin Chen,12/7/02

- NOTES:
- 1) ALL DIMENSIONS ARE IN MILLIMETERS WITH INCH EQUIVALENTS SHOWN IN BRACKETS.
  - 2) DIMENSIONS SHALL BE INTERPRETED PER ANSI Y14.5M-1994.
  - 3) MATERIALS OF ①AND ② ARE SHOWN ON DRAWING 307-0000-903.
  - 4) SPEC. OF THE PROD. IS SHOWN ON DRAWING 307-0300-221.



1				2				3				4			
NOTES: 1. [[]] : MODIFICATION CODE OPTION SEE DWG. 307-0000-210								REV.		ECN. NO.		APPROVED			
PROD. NO.				CIRCUITS				DIM.A				DIM.B			
A	HB2901*-[[]]			1			0.00 [ .000 ]				2.29 [ .090 ]				
	HB2902*-[[]]			2			2.54 [ .100 ]				4.83 [ .190 ]				
	HB2903*-[[]]			3			5.08 [ .200 ]				7.37 [ .290 ]				
	HB2904*-[[]]			4			7.62 [ .300 ]				9.91 [ .390 ]				
	HB2905*-[[]]			5			10.16 [ .400 ]				12.45 [ .490 ]				
	HB2906*-[[]]			6			12.70 [ .500 ]				14.99 [ .590 ]				
	HB2907*-[[]]			7			15.24 [ .600 ]				17.53 [ .690 ]				
	HB2908*-[[]]			8			17.78 [ .700 ]				20.07 [ .790 ]				
	HB2909*-[[]]			9			20.32 [ .800 ]				22.61 [ .890 ]				
	HB2910*-[[]]			10			22.86 [ .900 ]				25.15 [ .990 ]				
B	HB2911*-[[]]			11			25.40 [1.000]				27.69 [1.090]				
	HB2912*-[[]]			12			27.94 [1.100]				30.23 [1.190]				
	HB2913*-[[]]			13			30.48 [1.200]				32.77 [1.290]				
	HB2914*-[[]]			14			33.02 [1.300]				35.21 [1.390]				
	HB2915*-[[]]			15			35.46 [1.400]				37.85 [1.490]				
	HB2916*-[[]]			16			38.10 [1.500]				40.39 [1.590]				
	HB2917*-[[]]			17			40.64 [1.600]				42.93 [1.690]				
	HB2918*-[[]]			18			43.18 [1.700]				45.47 [1.790]				
	HB2919*-[[]]			19			45.72 [1.800]				48.01 [1.890]				
	HB2920*-[[]]			20			48.26 [1.900]				50.55 [1.990]				
C	HB2921*-[[]]			21			50.80 [2.000]				53.09 [2.090]				
	HB2922*-[[]]			22			53.34 [2.100]				55.63 [2.190]				
	HB2923*-[[]]			23			55.88 [2.200]				58.17 [2.290]				
	HB2924*-[[]]			24			58.42 [2.300]				60.71 [2.390]				
	HB2925*-[[]]			25			60.96 [2.400]				63.25 [2.490]				
	HB2926*-[[]]			26			63.50 [2.500]				65.79 [2.590]				
	HB2927*-[[]]			27			66.04 [2.600]				68.33 [2.690]				
	HB2928*-[[]]			28			68.58 [2.700]				70.87 [2.790]				
	HB2929*-[[]]			29			71.12 [2.800]				73.41 [2.890]				
	HB2930*-[[]]			30			73.66 [2.900]				75.95 [2.990]				
D	HB2931*-[[]]			31			76.20 [3.000]				78.49 [3.090]				
	HB2932*-[[]]			32			78.74 [3.100]				81.03 [3.190]				
	HB2933*-[[]]			33			81.28 [3.200]				83.57 [3.290]				
	HB2934*-[[]]			34			83.82 [3.300]				86.11 [3.390]				
	HB2935*-[[]]			35			86.36 [3.400]				88.65 [3.490]				
	HB2936*-[[]]			36			88.90 [3.500]				91.19 [3.590]				
	HB2937*-[[]]			37			91.44 [3.600]				93.73 [3.690]				
	HB2938*-[[]]			38			93.98 [3.700]				96.27 [3.790]				
	HB2939*-[[]]			39			96.52 [3.800]				98.81 [3.890]				
	HB2940*-[[]]			40			99.06 [3.900]				101.35 [3.990]				
E	X.±	0.38 [.015]	X°.±		UNITS	NAME(INTENDED USE) HEADER CONN., .025" SQ., .100" CENTER, S/R.				FOXCONN HON HAI PRECISION IND. CO.,LTD. TAIPEI, TAIWAN, R.O.C.					
	.X±	0.25 [.010]	.X°.±		MAT'L										
	.XX±	0.13 [.005]	.XX°.±			PART NO.(INTENDED USE) HB29 SERIES				TITLE: CUSTOMER DRAWING					
	.XXX±		.XXX°.±		FINISH										
	THESE DRAWINGS AND SPECIFICATIONS ARE THE PROPERTY OF HON HAI PRECISION IND. CO., LTD. AND SHALL NOT BE REPRODUCED, COPIED OR USED IN ANY MANNER WITHOUT THE PRIOR WRITTEN CONSENT OF HON HAI PRECISION IND. CO., LTD.				Q'TY	APPD: Ivan Laiw 8/29'01				DWG NO.: 307-0100-007					
						CHKD: Wolfe Liu 8/29'01									
						DR: Galaxy Guo 7/6'01						SCALE	SHEET	REV.	
								N/A		2/2	BX1				
1				2				3				4			

ITEM	DESCRIPTION	Q'TY	MATERIAL	TREATMENT	REMARK
1	INSULATOR	1	PBT, GLASS FILLED UL94V-0 RATED	COLOR BLACK	
2	CONTACT	SAME AS NO. OF POSITION. (SEE BELOW)	BRASS	50u" MIN. NICKEL UNDER PLATING, CONTACT TAIL AREA PLATING SEE BELOW.	

REMARK:

1. HARMFUL MATERIAL CONTROL PLEASE FOLLOW DOC No. “EPI12”
2. PROD. NO.: H B 29 -

OPTIONAL FOR MODIFICATION CODE.  
SEE DWG. 307-0000-210

HEADER

CONTACT AREA PLATING.  
G = GOLD FLASH ON CONTACT AREA,  
100u” TIN/LEAD ON TAIL.  
U = GOLD FLASH ON CONTACT AREA,  
100u” TIN ON TAIL WITH LEAD FREE

BREAKAWAY HEADER

NO.OF SINGLE ROW POS.  
SEE DWG 307-0100-006

TERMINATION & CONTACT TYPE

A	MC012351	Ivan Liaw 8/29’ 01
REV.	ECN. NO.	APPD.

<b>FOXCONN</b>		HON HAI PRECISION INDUSTRY CO., LTD. TAIPEI TAIWAN R.O.C.	
TITLE: HEADER CONN.		APPD.: Ivan Liaw 8/29’ 01	
		CHKD: Wolfe Liu 8/29’ 02	
PROD. NO.: HB29 SERIES		DR. : Galaxy Guo 7/6’ 01	
DWG. NO. 307-0000-903		REV. : AX1	SHEET: 1 OF 1

## SPECIFICATION :

### 1. PHYSICAL :

- 1-1. HOUSING : THERMOPLASTIC, PBT GLASS FILLED UL94V-0 RATING.
- 1-2. CONTACT : BRASS.

### 2. ELECTRICAL CHARACTERISTICS :

- 2-1. CONTACT CURRENT RATING : 3 AMPERES PER CONTACT.
- 2-2. INSULATION RESISTANCE : 1000 MEGOHMS MIN.
- 2-3. DIELECTRIC WITHSTANDING VOLTAGE: 500V AC FOR ONE MINUTE.

### 3. MECHANICAL CHARACTERISTICS :

- 3-1. CONTACT RETENTION FORCE : 2 LBS (0.91 kg) MIN. PER CONTACT

### 4. ENVIRONMENTAL DATA :

- 4-1. SOLDERABILITY: PASSED MIL-STD-202F, METHOD 208.
- 4-2. OPERATION TEMPERATURE : -10°C TO +85°C.

A	MCO12351	Ivan Laiang 8/18/07
REV.	ECN. NO.	APPD.

**FOXCONN**HON HAI PRECISION INDUSTRY CO., LTD.  
TAIPEI TAIWAN R.O.C.

TITLE: HEADER BREAKAWAY, .100"	APPD.: Ivan Laiang 8/18/07	
CEN., SPECIFICATION	CHKD.: Wolfe Lin 8/29/07	
PROD. NO.: HB29 SERIES	DR. : Galaxy Guo 7/6/01	
DWG. NO. : 307-0300-221	REV. : A	SHEET: 1 OF 1