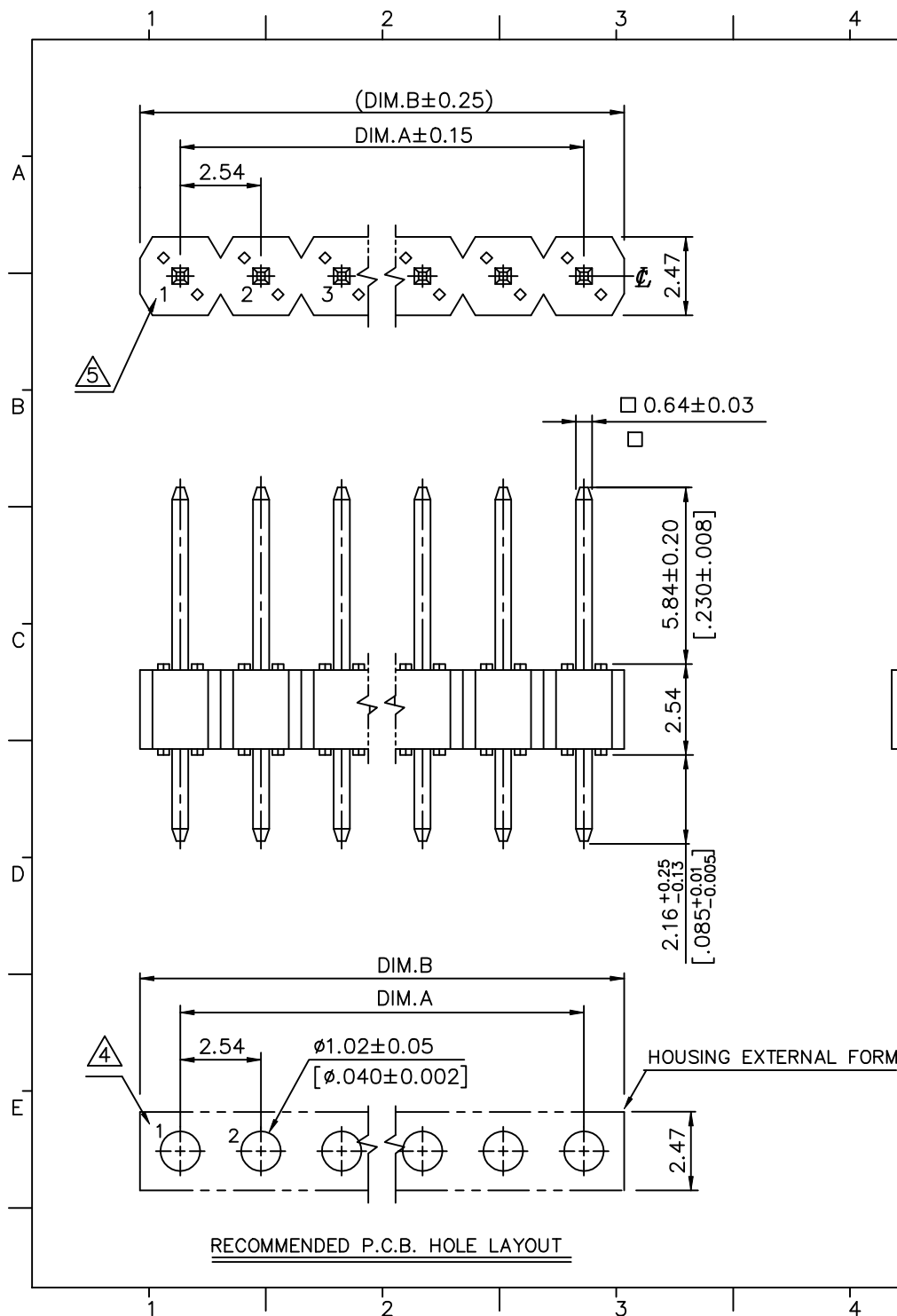
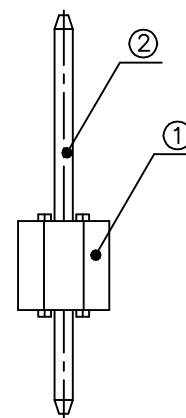


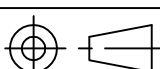
REV.	ECN. NO.	APPD.
A	IC023513	Yihsin Chen 5/22,02



- 2) DIMENSIONS SHALL BE INTERPRETED PER ANSI Y14.5M-1994.
- 3) MATERIALS OF ① AND ② ARE SHOWN ON DRAWING 307-0100-314.
- 4) PRODUCT SPECIFICATION PLEASE SEE DRAWING 307-0100-315.
- ⑤ POSITION NO. FOR REFERENCE ONLY.



X. ±	0.38 [.015]	X°. ±	UNITS	mm [INCH]	NAME(INTENDED USE)	FOXCONN
.X ±	0.25 [.010]	.X°. ±	MAT'L		HEADER CONN., .025" SQ., .100" CENTER, S/R.	HON HAI PRECISION IND. CO.,LTD. TAIPEI, TAIWAN, R.O.C.
.XX ±	0.13 [.005]	.XX°. ±			PART NO.(INTENDED USE)	TITLE:
.XXX ±		.XXX°. ±	FINISH		HB39 SERIES	CUSTOMER DRAWING
THESE DRAWINGS AND SPECIFICATIONS ARE THE PROPERTY OF HON HAI PRECISION IND. CO., LTD. AND SHALL NOT BE REPRODUCED, COPIED OR USED IN ANY MANNER WITHOUT THE PRIOR WRITTEN CONSENT OF HON HAI PRECISION IND. CO., LTD.					APPD: Yihsin Chen 5/22,02	DWG NO.: 307-0100-316
					CHKD: Wolfe Liu 5/21'02	
					DR: Nouny Lu 4/30'02	
					Q'TY	
					SCALE	SHEET
					N/A	1/2
					REV.	A

1		2		3		4		
NOTES: 1. [] [] [] : MODIFICATION CODE OPTION SEE DWG. 307-0000-210				REV.	ECN. NO.		APPROVED	
PROD. NO.		CIRCUITS	DIM.A	DIM.B				
A	HB3901*-[] [] []	1	0.00 [.000]	2.29 [.090]				
	HB3902*-[] [] []	2	2.54 [.100]	4.83 [.190]				
	HB3903*-[] [] []	3	5.08 [.200]	7.37 [.290]				
	HB3904*-[] [] []	4	7.62 [.300]	9.91 [.390]				
	HB3905*-[] [] []	5	10.16 [.400]	12.45 [.490]				
	HB3906*-[] [] []	6	12.70 [.500]	14.99 [.590]				
	HB3907*-[] [] []	7	15.24 [.600]	17.53 [.690]				
	HB3908*-[] [] []	8	17.78 [.700]	20.07 [.790]				
	HB3909*-[] [] []	9	20.32 [.800]	22.61 [.890]				
	HB3910*-[] [] []	10	22.86 [.900]	25.15 [.990]				
B	HB3911*-[] [] []	11	25.40 [1.000]	27.69 [1.090]				
	HB3912*-[] [] []	12	27.94 [1.100]	30.23 [1.190]				
	HB3913*-[] [] []	13	30.48 [1.200]	32.77 [1.290]				
	HB3914*-[] [] []	14	33.02 [1.300]	35.21 [1.390]				
	HB3915*-[] [] []	15	35.46 [1.400]	37.85 [1.490]				
	HB3916*-[] [] []	16	38.10 [1.500]	40.39 [1.590]				
	HB3917*-[] [] []	17	40.64 [1.600]	42.93 [1.690]				
	HB3918*-[] [] []	18	43.18 [1.700]	45.47 [1.790]				
	HB3919*-[] [] []	19	45.72 [1.800]	48.01 [1.890]				
	HB3920*-[] [] []	20	48.26 [1.900]	50.55 [1.990]				
C	HB3921*-[] [] []	21	50.80 [2.000]	53.09 [2.090]				
	HB3922*-[] [] []	22	53.34 [2.100]	55.63 [2.190]				
	HB3923*-[] [] []	23	55.88 [2.200]	58.17 [2.290]				
	HB3924*-[] [] []	24	58.42 [2.300]	60.71 [2.390]				
	HB3925*-[] [] []	25	60.96 [2.400]	63.25 [2.490]				
	HB3926*-[] [] []	26	63.50 [2.500]	59.79 [2.590]				
	HB3927*-[] [] []	27	66.04 [2.600]	68.33 [2.690]				
	HB3928*-[] [] []	28	68.58 [2.700]	70.87 [2.790]				
	HB3929*-[] [] []	29	71.12 [2.800]	73.41 [2.890]				
	HB3930*-[] [] []	30	73.66 [2.900]	75.95 [2.990]				
D	HB3931*-[] [] []	31	76.20 [3.000]	78.49 [3.090]				
	HB3932*-[] [] []	32	78.74 [3.100]	81.03 [3.190]				
	HB3933*-[] [] []	33	81.28 [3.200]	83.57 [3.290]				
	HB3934*-[] [] []	34	83.82 [3.300]	86.11 [3.390]				
	HB3935*-[] [] []	35	86.36 [3.400]	88.65 [3.490]				
	HB3936*-[] [] []	36	88.90 [3.500]	91.19 [3.590]				
	HB3937*-[] [] []	37	91.44 [3.600]	93.73 [3.690]				
	HB3938*-[] [] []	38	93.98 [3.700]	96.27 [3.790]				
	HB3939*-[] [] []	39	96.52 [3.800]	98.81 [3.890]				
	HB3940*-[] [] []	40	99.06 [3.900]	101.35 [3.990]				
E	X.±	X°.±	UNITS mm [INCH]	NAME(INTENDED USE) HEADER CONN., .025" SQ., .100" CENTER, S/R.		FOXCONN HON HAI PRECISION IND. CO.,LTD. TAIPEI, TAIWAN, R.O.C.		
	.X±	.X°.±	MAT'L	PART NO.(INTENDED USE) HB39 SERIES				
	.XX±	.XX°.±	FINISH	APPD: Yihsin Chen 5/22,02		TITLE: CUSTOMER DRAWING		
	.XXX±	.XXX°.±		Q'TY		DWG NO.: 307-0100-316		
	THESE DRAWINGS AND SPECIFICATIONS ARE THE PROPERTY OF HON HAI PRECISION IND. CO., LTD. AND SHALL NOT BE REPRODUCED. COPIED OR USED IN ANY MANNER WITHOUT THE PRIOR WRITTEN CONSENT OF HON HAI PRECISION IND. CO., LTD.			CHKD: Wolfe Liu 5/21'02			SCALE	SHEET
			DR: Nouny Lu 4/30'02	N/A			2/2	A
1		2		3		4		

ITEM	DESCRIPTION	Q'TY	MATERIAL	TREATMENT	REMARK
1	INSULATOR	1	HIGH TEMP. THERMOPLASTIC, GLASS FILLED, UL94 V-0..	SEE BELOW	
2	CONTACT	SAME AS NO. OF POSITION. (SEE BELOW)	COPPER ALLOY	50u" MIN. NICKEL UNDER PLATING, CONTACT AND TAIL ARAE PLATING SEE BELOW.	

REMARK:

1. PROD. NO.: H B 39 *

HEADER

OPTIONAL FOR MODIFICATION CODE.
SEE DWG. 307-0000-210.

SINGLE ROW

PLATING OPTION
U = GOLD FLASH ON CONTACT AREA
100u" TIN ON TAIL WITH LEAD FREE.

TERMINATION & CONTACT TYPE

NO. OF CONTACT POS.

01 = 1 POSITION.
02 = 2 POSITIONS.
.
.
40 = 40 POSITIONS.

FOXCONN HON HAI PRECISION INDUSTRY CO., LTD.
TAIPEI TAIWAN R.O.C.

TITLE: HEADER BREAKAWAY, .
.100" CEN., .045" SQ. S/R

APPD. :Jeff Chen '950414

CHKD: Wolfe Liu 5/21'02

A	IC023513	Yihsin Chen 5/22,02		PROD. NO.: HB39 SERIES	DR. : Nouny Lu 05/5'02
REV.	ECN. NO.	APPD.		DWG. NO. : 307-0100-314	REV. : A SHEET: 1 OF 1

SPECIFICATIONS :

1. PHYSICAL:

- 1-1. HOUSING : HIGH TEMP. THERMOPLASTIC , GLASS FILLED, UL94V-0 RATING.
- 1-2. CONTACT: COPPER ALLOY.

2. ELECTRICAL CHARACTERISTICS:

- 2-1. CONTACT CURRENT RATING : 3 AMPERE, CONTINUOUSLY.
- 2-2. DIELECTRIC WITHSTANDING VOLTAGE: 500V AC FOR ONE MINUTE.
- 2-3. INSULATION RESISTANCE: 1000 MEGOHMS MIN.

3. MECHANICAL CHARACTERISTICS:

- 3-1. CONTACT RETENTION FORCE: 2 LBS (0.91 Kg) MIN.

4. ENVIRONMENTAL DATA:

- 4-1. SOLDERABILITY: PASSED MIL-STD-202F, METHOD 208.
- 4-2. OPERATION TEMPERATURE: -40 TO +105 .

			FOXCONN HON HAI PRECISION INDUSTRY CO., LTD. TAIPEI TAIWAN R.O.C.	
			TITLE HEADER BREAKAWAY, .100" CEN.,SPECIFICATION	APP.: Yihsin Chen 5/22,02 CHKD: Wolfe Liu 5/21'02
A	IC023513	Yihsin Chen 5/22,02	PROD. NO.: HB39[] * -[] [] []	DR. : Nouny Lu 05/5' 02
REV.	ECN. NO.	APPD.	DWG. NO. 307-0100-315	REV. : A SHEET: 1 OF 1