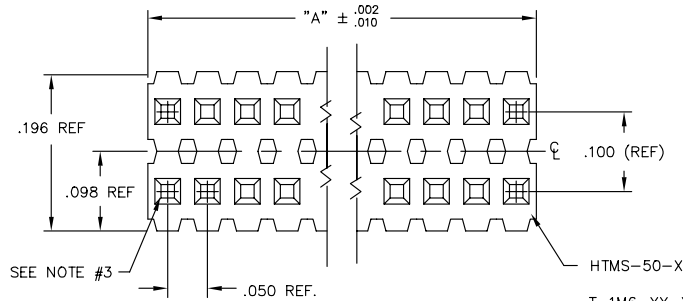
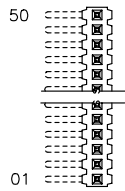
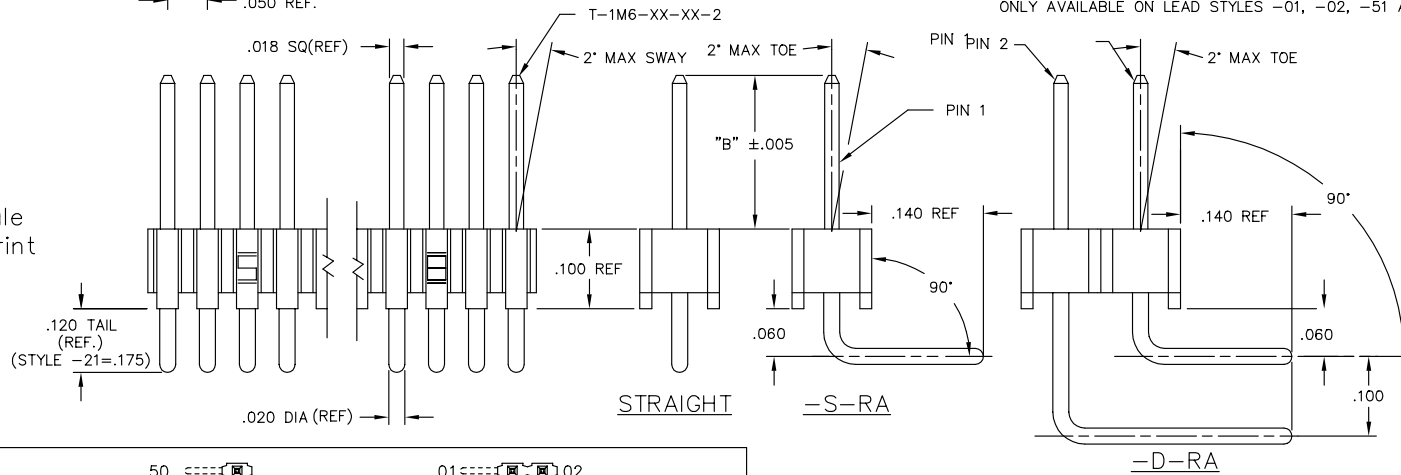


NOTES:

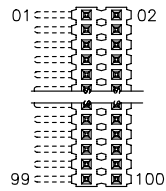
1. MAX ALLOWABLE BOW: .005 INCH/INCH.
2. TERMINAL PUSHOUT FORCE: 2 lbs. MIN.
3. MAX PIN ROTATION IN BODY: 2°.
4. CUT FLASH .010 MAX
5. TUBE POSITIONS 8-50 ONLY. POSITIONS 2-7 TO BE BULK PACKAGED.



Do not scale
from this print

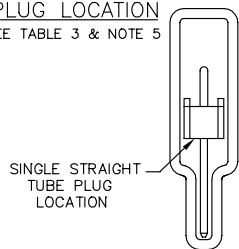


SINGLE ROW
TOP VIEW

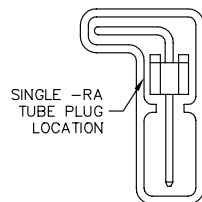


DOUBLE ROW
TOP VIEW

PLUG LOCATION
SEE TABLE 3 & NOTE 5



TUBE VIEW
SEE TABLE 3 & NOTE 5



PROPRIETARY NOTE
THIS DOCUMENT CONTAINS INFORMATION
CONFIDENTIAL AND PROPRIETARY TO
SAMTEC INC. AND SHALL NOT BE
REPRODUCED OR TRANSMITTED IN
ANY FORM OR BY ANY MEANS
ELECTRONIC OR MECHANICAL,
INCLUDING PHOTOCOPYING, RECORDING,
OR BY ANY INFORMATION STORAGE
AND RETRIEVAL SYSTEM, WITHOUT THE
WRITTEN CONSENT OF SAMTEC INC.

DIMENSIONS ARE IN INCHES

UNLESS OTHERWISE NOTED

TOLERANCES ARE:

ONE PLACE DECIMALS ± .1

THREE PLACE DECIMALS ± .005

ANGLES
± 2°

TWO PLACE DECIMALS ± .01

FOUR PLACE DECIMALS ± .0020

TITLE:

TERMINAL
MICRO STRIP

DWG NO:

TMS-1XX-XX-XX-X-XX-XXX

SHEET 1 OF 1

TMS-1XX-XX-XX-X-XX-XXX

BODY LENGTH SPEC
EXPRESSED IN # POS PER ROW
(-01 THRU -50)
"A" = "XX" x .050

TERMINAL SPEC
SEE TABLE 1

PLATING SPECIFICATION

-G: GOLD, SPECIFY -G IN TERMINAL SUFFIX -XX

-T: TIN, SPECIFY -T IN TERMINAL SUFFIX -XX

ONLY AVAILABLE ON LEAD STYLES -01, -02, -51 AND -52.

-S: SELECTIVE, SPECIFY -S IN TERMINAL SUFFIX -XX

-F: FLASH GOLD, SPECIFY -F IN TERMINAL SUFFIX -XX

-H: HEAVY GOLD, SPECIFY -H IN TERMINAL SUFFIX -XX

-FM: SELECTIVE FLASH GOLD, MATTE TIN REMAINDER SPECIFY -F IN TERMINAL SUFFIX -XX

-SM: SELECTIVE GOLD, MATTE TIN REMAINDER SPECIFY -S IN TERMINAL SUFFIX -XX

-TM: MATTE TIN -T IN TERMINAL SUFFIX -XX

ONLY AVAILABLE ON LEAD STYLES -01, -02, -51 AND -52.

OPTION

-POLARIZING SPECIFICATION
XXX INDICATES POS. TO BE OMITTED
(SEE FIG. 1)

OPTION

-RA: RIGHT ANGLE (SEE TABLE 1)
(SINGLE & DOUBLE RA AVAILABLE
IN STYLE -01, -02, & -03 ONLY)

BODY SPECIFICATION

-S: SINGLE (USE HTMS-50-S)

-D: DOUBLE (USE HTMS-50-D)

TABLE 2

LENGTH	"L"	CONTACT AREA
-01	.440	.140
-02	.410	.140
-03	.610	.190
-04	.505	.190
-05	.705	.190
-12	.425	.165
-13	.625	.190
-14	.555	.190
-15	.755	.190
-16	.825	.190
-17	.320	.060
-18	.450	.190
-19	.650	.190
-21	.505	.190
-25	.330	.060
-26	.373	.075
-27	.398	.100
-28	1.050	.190

* REF FOR
PIN LENGTH

PACKAGING TUBE TABLE

BODY STYLE	LEAD STYLE	TUBE	PLUG
TMS-DOUBLE STRAIGHT STYLES	-01,-21, -51,-52	PT-1-24-01-22	TP-03
	-02	PT-1-24-01-95	TP-03
	-53	PT-1-24-02-66	TP-03
	-55,-56	PT-1-24-01-29	TP-24
	-54	PT-1-24-02-46	TP-03
	-57	PT-1-24-02-25	TP-03
	-58,-59	PT-1-24-16-29	TP-07
	-60	PT-1-24-18-29	TP-07
	-01	PT-1-24-01-24	TP-24
	-21	PT-1-24-02-29	TP-24
TMS-SINGLE STRAIGHT STYLES	-58,-59,-60	PT-1-24-10-03	TP-33
	-02	PT-1-24-01-12	TP-12
	-51,-52	PT-1-24-01-66	TP-24
	-53,-54, -55,-56	PT-1-24-02-03	TP-24
	-57	PT-1-24-01-46	TP-24
	-01,-02,-03	PT-1-24-02-66	TP-03
TMS-DOUBLE RIGHT ANGLE	-01,-02,-03	PT-1-24-02-66	TP-03
TMS-SINGLE RIGHT ANGLE	-01,-02,-03	PT-1-24-01-66	TP-24

TABLE 1

STRAIGHT OPTION		RIGHT ANGLE OPTION			ALL
LEAD STYLE	TERMINAL SPEC.	LEAD STYLE	PIN #1	PIN #2	"B"
-01	T-1M6-18-XX-2	-01	T-1M6-14-XX-2	T-1M6-15-XX-2	.230
-02	T-1M6-17-XX-2	-02	T-1M6-12-XX-2	T-1M6-13-XX-2	.100
-03	N/A	-03	T-1M6-18-XX-2	T-1M6-19-XX-2	.125
-21	T-1M6-21-XX-2	-21	N/A	N/A	.230
-51	T-1M6-02-XX-2	-51	N/A	N/A	.190
-52	T-1M6-12-XX-2	-52	N/A	N/A	.205
-53	T-1M6-04-XX-2	-53	N/A	N/A	.285
-54	T-1M6-14-XX-2	-54	N/A	N/A	.335
-55	T-1M6-03-XX-2	-55	N/A	N/A	.390
-56	T-1M6-13-XX-2	-56	N/A	N/A	.405
-57	T-1M6-19-XX-2	-57	N/A	N/A	.430
-58	T-1M6-05-XX-2	-58	N/A	N/A	.485
-59	T-1M6-15-XX-2	-59	N/A	N/A	.535
-60	T-1M6-16-XX-2	-60	N/A	N/A	.605

MATERIAL:

BODY:
LIQUID CRYSTAL POLYMER
COLOR: BLACK

TERMINAL:
PHOSPHOR BRONZE

samtec

520 PARK EAST BLVD. NEW ALBANY, INDIANA 47151-1147
PHONE (812) 944-6733 P.O. BOX 1147
CODE 55322

MADE BY: PURVIS 8-13-87

ENGL. APPROVAL

CHECKED BY: WILLIAMS 10-21-87

TMS-1XX-XX-XX-X-XX-XXX

SHEET 1 OF 1