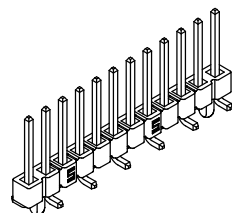
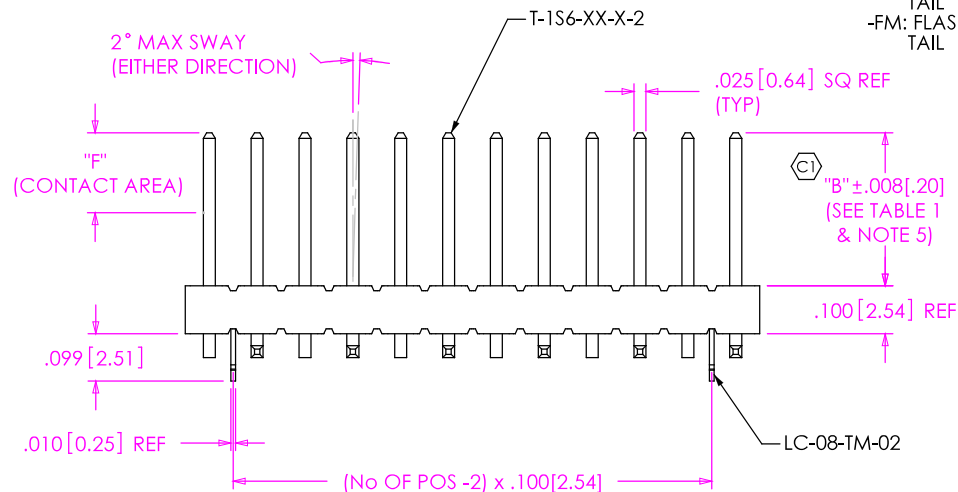
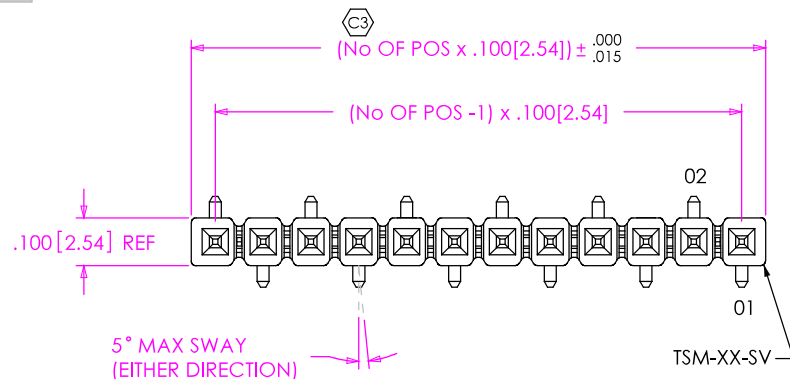


DO NOT  
SCALE FROM  
THIS PRINT

TSM-1XX-XX-XXX-SV-XX-XXX-XX

No OF POSITIONS  
-02 THRU -50LEAD STYLE  
SEE TABLE 1

## PLATING SPECIFICATION

-T: TIN (USE T-1S6-XX-T-2)  
 -S: SELECTIVE (USE T-1S6-XX-S-2)  
 -G: GOLD (USE T-1S6-XX-G-2)  
 -L: LIGHT SELECTIVE (USE T-1S6-XX-L-2)  
 -F: FLASH SELECTIVE (USE T-1S6-XX-F-2)  
 -H: HEAVY GOLD (USE T-1S6-XX-H-2)  
 -P: GOLD FLASHED PALLADIUM NICKEL (USE T-1S6-XX-P-2)  
 -TL: TIN / LEAD (USE T-1S6-XX-TL-2) [LEAD STYLE -01 & -02 ONLY]  
 -STL: SELECTIVE TIN / LEAD (USE T-1S6-XX-STL-2) [LEAD STYLE -01 & -02 ONLY]  
 -TM: MATTE TIN  
 -SM: SELECTIVE HEAVY GOLD, MATTE TIN ON TAIL  
 -LM: SELECTIVE LIGHT GOLD, MATTE TIN ON TAIL  
 -FM: FLASH SELECTIVE GOLD, MATTE TIN ON TAIL

## OPTION #3

-P: PICK & PLACE PAD (SEE FIG. 3)  
 [USE PPP-07] [4 POS MINIMUM OR -02 & -03 POS WITH -TR] (SEE NOTE 7)  
 -TR: TAPE & REEL (SEE NOTE 7) (-02 THRU -22 POS)

## OPTION #2

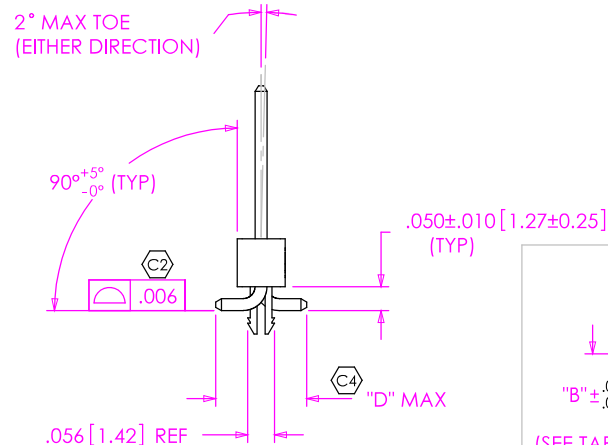
POLARIZED POSITION: SPECIFY PIN OMITTED

## OPTION #1

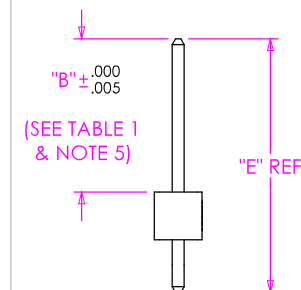
-LC: LOCKING CLIP (SEE FIG. 1)  
 [USE LC-08-TM-02] [-02 THRU -36 POS: 2 PER STRIP, -02 POS: 1 PER STRIP]  
 -A: ALIGNMENT PIN (SEE FIG. 2)

## ROW SPECIFICATION

-SV: SINGLE VERTICAL (USE TSM-XX-SV-XX)



## IN-PROCESS



## NOTES:

1. Ⓢ REPRESENTS A CRITICAL DIMENSION.
2. COPLANARITY TO BE WITHIN .006[.15].
3. BURR ALLOWANCE: .0015[.038] MAX.
4. MAXIMUM CUT FLASH: .015[.38] MAXIMUM ON TOP & SIDES OF BODY AND .030[.76] MAXIMUM ON SURFACE MOUNT SIDE OF BODY.
5. POST HEIGHT VARIATION BETWEEN ANY TWO PINS: .005[.13] MAXIMUM.
6. MAXIMUM ALLOWABLE BOW: .002[.05] INCH/INCH AFTER ASSEMBLY.
7. LEADS MAY NOT BE VISIBLE FOR CUSTOMER VISUAL INSPECTION WITH -P OPTION ON SMALLER POSITIONS PARTS.

BE

TABLE 1

STYLE	"B"	"C"	"D" MAX	"E"	"F"	TERMINAL
-01	.230[5.84]	.280[7.11]	.208[5.28]	.445[11.30]	.165 [4.19]	T-1S6-16-X-2
-02	.320[8.13]	.370[9.40]	.193[4.90]	.530[13.46]	.165 [4.19]	T-1S6-08-X-2
-03	.420[10.67]	.470[11.94]	.193[4.90]	.630[16.00]	.165 [4.19]	T-1S6-15-X-2
-04	.120[3.05]	.270[6.86]	.208[5.28]	.335[8.51]	.050 [1.27]	T-1S6-21-X-2
-05	.075[1.91]	.270[6.86]	.223[5.66]	.300[7.62]	.050 [1.27]	T-1S6-18-X-2

FIG. 1

TSM-112-02-XXX-SV-LC SHOWN

UNLESS OTHERWISE SPECIFIED,  
DIMENSIONS ARE IN INCHES.

TOLERANCES ARE:

DECIMALS ANGLES  
 .XX: ±.01 [.3] 2°  
 .XXX: ±.005 [.13]  
 .XXXX: ±.0020 [.051]

## PROPRIETARY NOTE

THIS DOCUMENT CONTAINS INFORMATION  
 CONFIDENTIAL AND PROPRIETARY TO  
 SAMTEC, INC. AND SHALL NOT BE REPRODUCED  
 OR TRANSFERRED TO OTHER DOCUMENTS OR  
 DISCLOSED TO OTHERS OR USED FOR ANY  
 PURPOSE OTHER THAN THAT WHICH IT WAS  
 OBTAINED WITHOUT THE EXPRESSED WRITTEN  
 CONSENT OF SAMTEC, INC.

MATERIAL: DO NOT SCALE DRAWING  
 INSULATOR: LCP, COLOR: BLACK  
 TERMINAL: PHOS BRONZE



SHEET SCALE: 2.5:1

F:\DWG\MISC\MKTG\TSM-1XX-XX-XXX-SV-XX-XXX-XX-MKT.SLDDRW

SAMTEC

520 PARK EAST BLVD, NEW ALBANY, IN 47150  
 \* PHONE: 812.944.6733 FAX: 812.948.5047  
 e-Mail: [INFO@SAMTEC.COM](mailto:INFO@SAMTEC.COM) CODE: 55322

DESCRIPTION:

SINGLE ROW .100 SMT ASSEMBLY

DWG. NO.

TSM-1XX-XX-XXX-SV-XX-XXX-XX

BY: DEAN P

8/21/2002

SHEET 1 OF 2

FIG. 3  
-P: PICK & PLACE PAD OPTION  
4 POSITION MINIMUM  
[PLACE PAD ON CENTERLINE AS SHOWN]

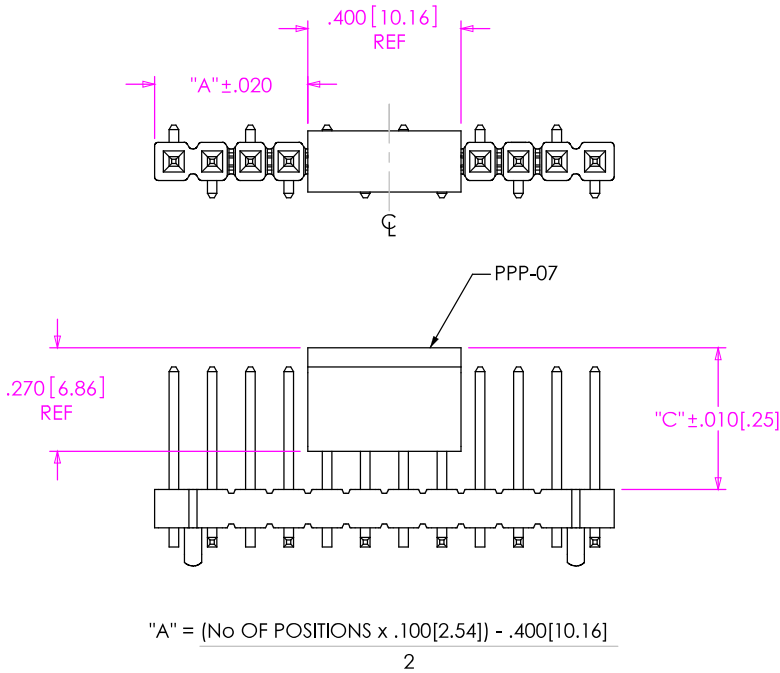


FIG. 2  
-A: ALIGNMENT PIN OPTION  
TSM-112-02-X-SV-A SHOWN  
[DIFFERENT AS SHOWN, OTHERWISE SAME AS FIG. 1]

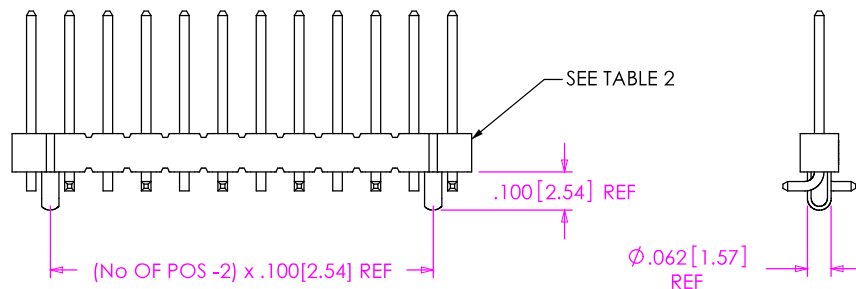


TABLE 2: ALIGNMENT PIN BODY	
POSITION	USE BODY
-02 THRU -03	* TSM-XX-SV-A
-04 THRU -50	TSM-XX-SV-XX

\* NOTE: POSITIONS -02 THRU -03 MUST BE MOLD TO POSITION

PACKAGING TABLE			
STYLE	OPTION	TUBE	PLUG
-01	----	PT-1-24-02-29 (SEE NOTE 3)	TP-24
-02, -04, -05	----	PT-1-24-02-29 (SEE NOTE 3)	TP-24
-01, -02, -04, -05	-LC, -A	PT-1-24-02-29 (SEE NOTE 3)	TP-24
-01, -04, -05	-P	PT-1-24-05-29	TP-03
-01, -04, -05	-LC-P, -A-P	PT-1-24-05-29	TP-03
-02	-P	PT-1-24-13-29	TP-03
-02	-LC-P, -A-P	PT-1-24-13-29	TP-03
-03	----	PT-1-24-10-29 (SEE NOTE 3)	TP-24
-03	-LC, -A	PT-1-24-10-29 (SEE NOTE 3)	TP-24
-03	-P	PT-1-24-14-29	TP-09
-03	-LC-P, -A-P	PT-1-24-14-29	TP-09

NOTES:  
1. LOAD PARTS POSITION 1 FIRST IN SAME DIRECTION AS ARROW.  
2. NOTE DELETED  
3. PACKAGE POSITIONS -04 THRU -36.

FIG. 4  
TUBE PACKAGING

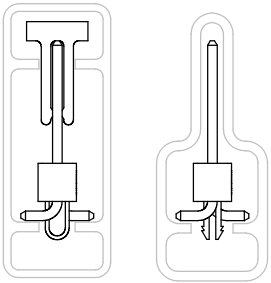
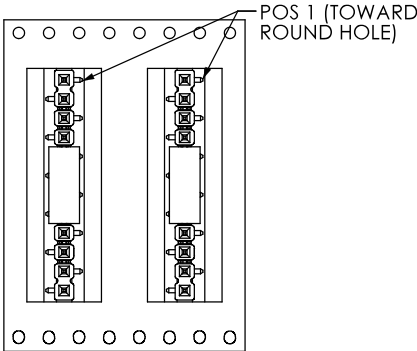
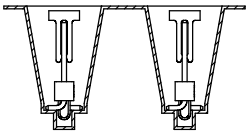


FIG. 5  
-TR: TAPE & REEL PACKAGNG OPTION



USER DIRECTION OF UNREELING  
POCKET NOT DETAILED



F:\DWG\MISC\MKTG\TSM-1XX-XX-XXX-SV-XX-XXX-MKT.SLDDRW

**PROPRIETARY NOTE**  
THIS DOCUMENT CONTAINS INFORMATION  
CONFIDENTIAL AND PROPRIETARY TO  
SAMTEC, INC. AND SHALL NOT BE REPRODUCED  
OR TRANSFERRED TO OTHER DOCUMENTS OR  
DISCLOSED TO OTHERS OR USED FOR ANY  
PURPOSE OTHER THAN THAT WHICH IT WAS  
OBTAINED WITHOUT THE EXPRESSED WRITTEN  
CONSENT OF SAMTEC, INC.

DO NOT SCALE DRAWING

SHEET SCALE: 2:1

**SAMTEC**  
520 PARK EAST BLVD, NEW ALBANY, IN 47150  
\* PHONE: 812.944.6733 FAX: 812.948.5047  
e-Mail: [INFO@SAMTEC.COM](mailto:INFO@SAMTEC.COM) CODE: 55322

DESCRIPTION:  
SINGLE ROW .100 SMT ASSEMBLY

DWG. NO.  
TSM-1XX-XX-XXX-SV-XX-XXX-XX

BY: DEAN P 8/21/2002 SHEET 2 OF 2