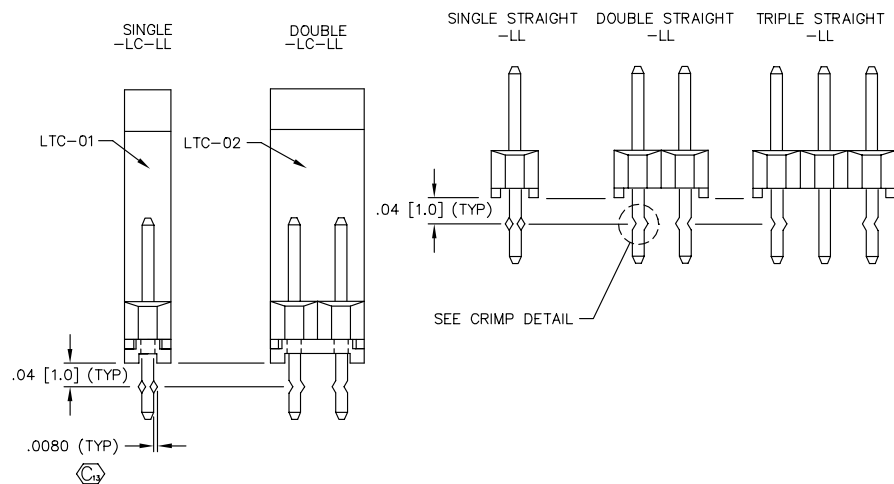


REV CN

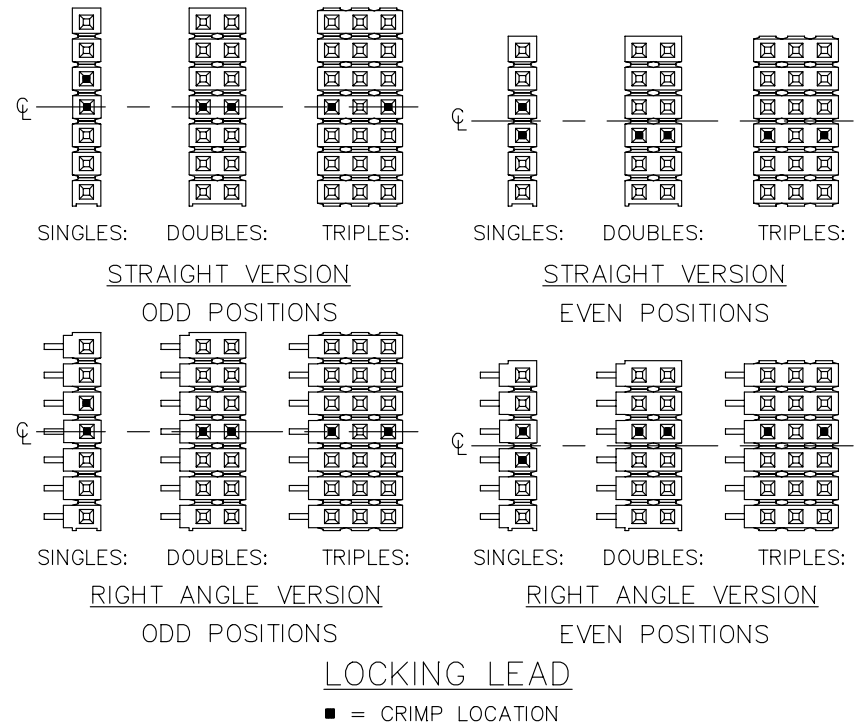
FIG. 2  
LOCKING LEAD  
(NOTE: END VIEWS SHOWN.)



**PROPRIETARY NOTE**

THIS DOCUMENT CONTAINS INFORMATION  
CONFIDENTIAL AND PROPRIETARY TO  
SAMTEC INC. AND SHALL NOT BE  
REPRODUCED OR TRANSMITTED TO  
OTHER DOCUMENTS OR DISCLOSED TO  
OTHERS OR USED FOR ANY PURPOSE  
OTHER THAN THAT FOR WHICH IT WAS  
OBTAINED WITHOUT THE EXPRESSED  
WRITTEN CONSENT OF SAMTEC INC.

UNLESS OTHERWISE NOTED			TITLE:	DWG NO:
DIMENSIONS ARE IN INCHES		TOLERANCES ARE:	ASSEMBLY, .025 [.64] SQ. POST TERMINAL STRIP	TSW-XXX-XX-XXX-X-XX-XXX  SHEET 2 OF 4
ONE PLACE DECIMALS ±.1 [3]	THREE PLACE DECIMALS ± .005 [.13]	ANGLES ± 2°		
TWO PLACE DECIMALS ±.01 [.3]	FOUR PLACE DECIMALS ± .0020 [.051]			



**samtec**

520 PARK EAST BLVD. NEW ALBANY, INDIANA 47150  
PHONE (812) 944-6733 P.O. BOX 1147  
CODE 55322

MADE BY: KOLB 8-24-88

TSW-XXX-XX-XXX-X-XX-XXX  
SHEET 2 OF 4