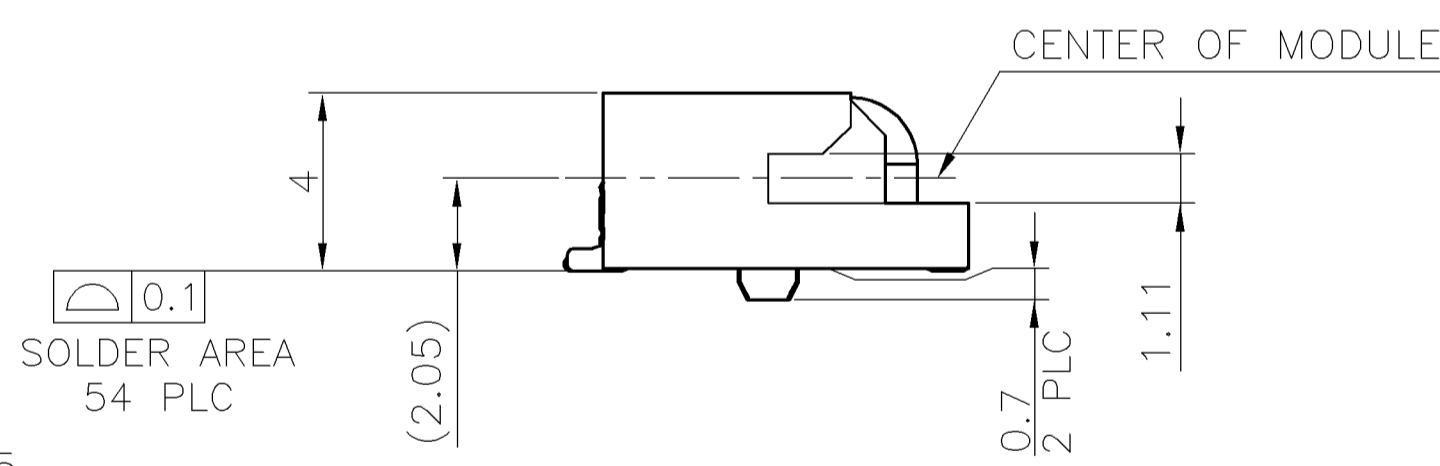
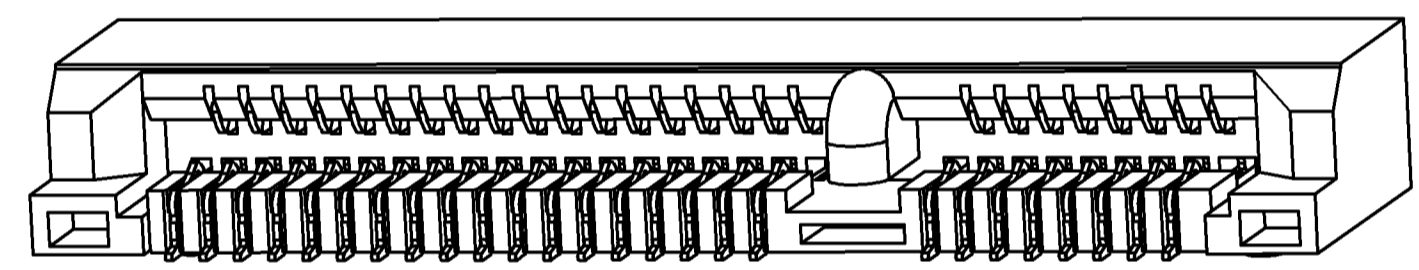




- NOTE:
- MATERIAL:
HOUSING: LCP WITH 30% GF, UL 94V-0, BLACK COLOR.
CONTACTS: PHOSPHOR BRONZE.
PEGS: BRASS.
 - FINISH:
CONTACTS: (SEE TABLE) GOLD PLATED ON CONTACT AREA, WITH GOLD FLASH OVER 1.27μm [50μ"] MIN. NICKEL ON ENTIRE CONTACT.

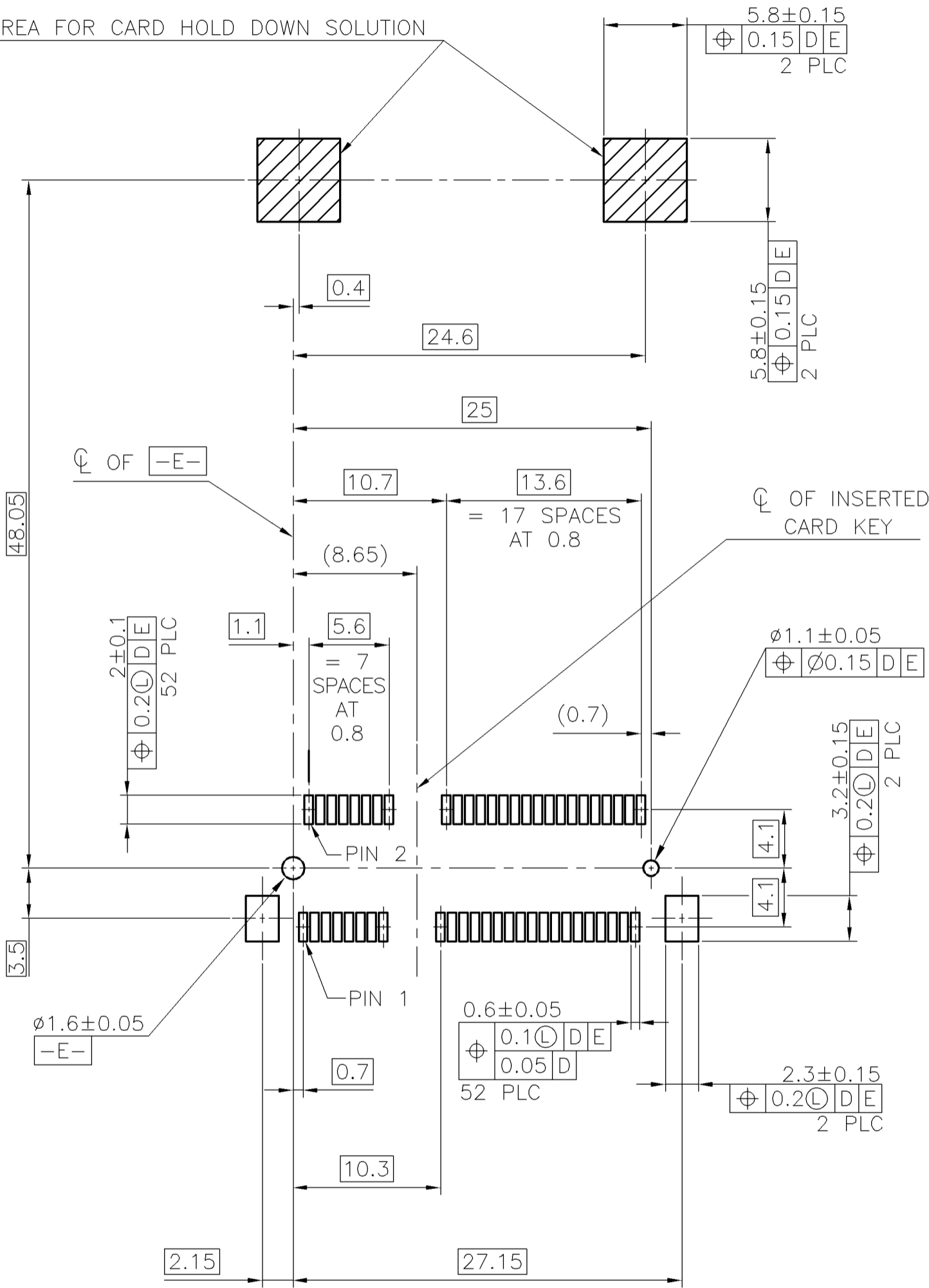
PEGS: 3.048μm [120μ"] MIN. MATTE-TIN OVER 1.27μm [50μ"] MIN. NICKEL.
 - REFLOW SOLDER CAPABLE TO 260° PER TE TEST SPEC. 109-201, CONDITION B.



TYPE II	0.254μm [10μ"]	2041119-4
	GOLD FLASH	2041119-3
TYPE I	0.254μm [10μ"]	2041119-2
	GOLD FLASH	2041119-1
PACKING TYPE	MIN. GOLD THICKNESS	PART NUMBER

THIS DRAWING IS A CONTROLLED DOCUMENT.			DWN A. WU 05JAN2009		<div>Tyco Electronics Corporation Taipei, Taiwan</div>					
DIMENSIONS: MM			CHK S. HOU 05JAN2009							
			APVD W. KODAMA 05JAN2009		NAME 0.8 MM PITCH MINI PCI EXPRESS CONNECTOR ASSEMBLY (4.0MM HEIGHT)					
			TOLERANCES UNLESS OTHERWISE SPECIFIED:						PRODUCT SPEC	
			0 PLC ± -						108-99102	
			1 PLC ± 0.3						APPLICATION SPEC	
			2 PLC ± 0.2						—	
3 PLC ± -			WEIGHT		SIZE	CAGE CODE	DRAWING NO		RESTRICTED TO	
4 PLC ± -			1.172 GRAMS		A2	00779	C-2041119		—	
ANGLES ± 3°			CUSTOMER DRAWING							
MATERIAL			FINISH		SCALE —					
SEE NOTE			SEE NOTE		SHEET 1 of 4					
					REV B					

COMPONENT KEEP OUT AREA FOR CARD HOLD DOWN SOLUTION



—D— IS THE TOP SURFACE OF PCB.

RECOMMENDED P.C. BOARD PATTERN LAYOUT
(TOP VIEW)

CONNECTOR PIN-OUT DEFINITIONS

PIN#	NAME	PIN#	NAME
51	RESERVED	52	+3.3Vaux
49	RESERVED	50	GND
47	RESERVED	48	+1.5V
45	RESERVED	46	LED_WPAN#
43	GND	44	LED_WLAN#
41	+3.3Vaux	42	LED_WWAN#
39	+3.3Vaux	40	GND
37	GND	38	USB_D+
35	GND	36	USB_D-
33	PETp0	34	GND
31	PETn0	32	SMB_DATA
29	GND	30	SMB_CLK
27	GND	28	+1.5V
25	PERp0	26	GND
23	PERn0	24	+3.3Vaux
21	GND	22	PERST#
19	RESERVED* (UIM_C4)	20	W_DISABLE#
17	RESERVED* (UIM_C8)	18	GND
MECHANICAL KEY			
15	GND	16	UIM_VPP
13	REFCLK+	14	UIM_RESET
11	REFCLK-	12	UIM_CLK
9	GND	10	UIM_DATA
7	CLKREQ#	8	UIM_PWR
5	COEX2	6	1.5V
3	COEX1	4	GND
1	WAKE#	2	3.3Vaux

* RESERVED FOR FUTURE UIM INTERFACE (IF NEEDED)

THIS DRAWING IS A CONTROLLED DOCUMENT.

DIMENSIONS:

MM

MATERIAL

TOLERANCES UNLESS OTHERWISE SPECIFIED:

0 PLC	±	—
1 PLC	±	0.3
2 PLC	±	0.2
3 PLC	±	—
4 PLC	±	—
ANGLES	±	3°
FINISH		

APVD

W. KODAMA

PRODUCT SPEC

APPLICATION SPEC

WEIGHT

—

CUSTOMER DRAWING

DWN

A. WU

05JAN2009

CHK

S. HOU

05JAN2009

APVD

W. KODAMA

05JAN2009

NAME

SIZE

A2

CAGE CODE

00779

DRAWING NO

C=2041119

RESTRICTED TO

—

SCALE

—

SHEET

2 of 4

REV

B

Tyco Electronics Corporation
Taipei, Taiwan

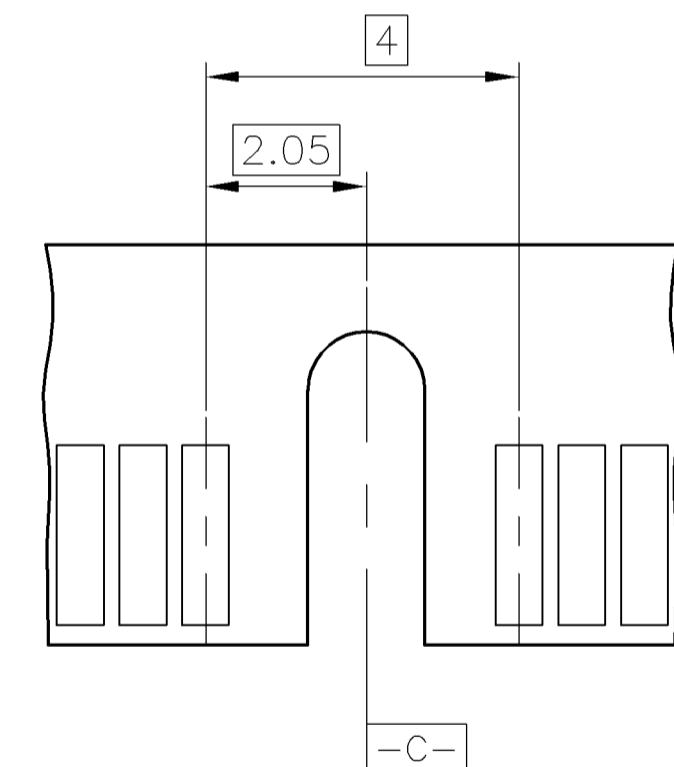
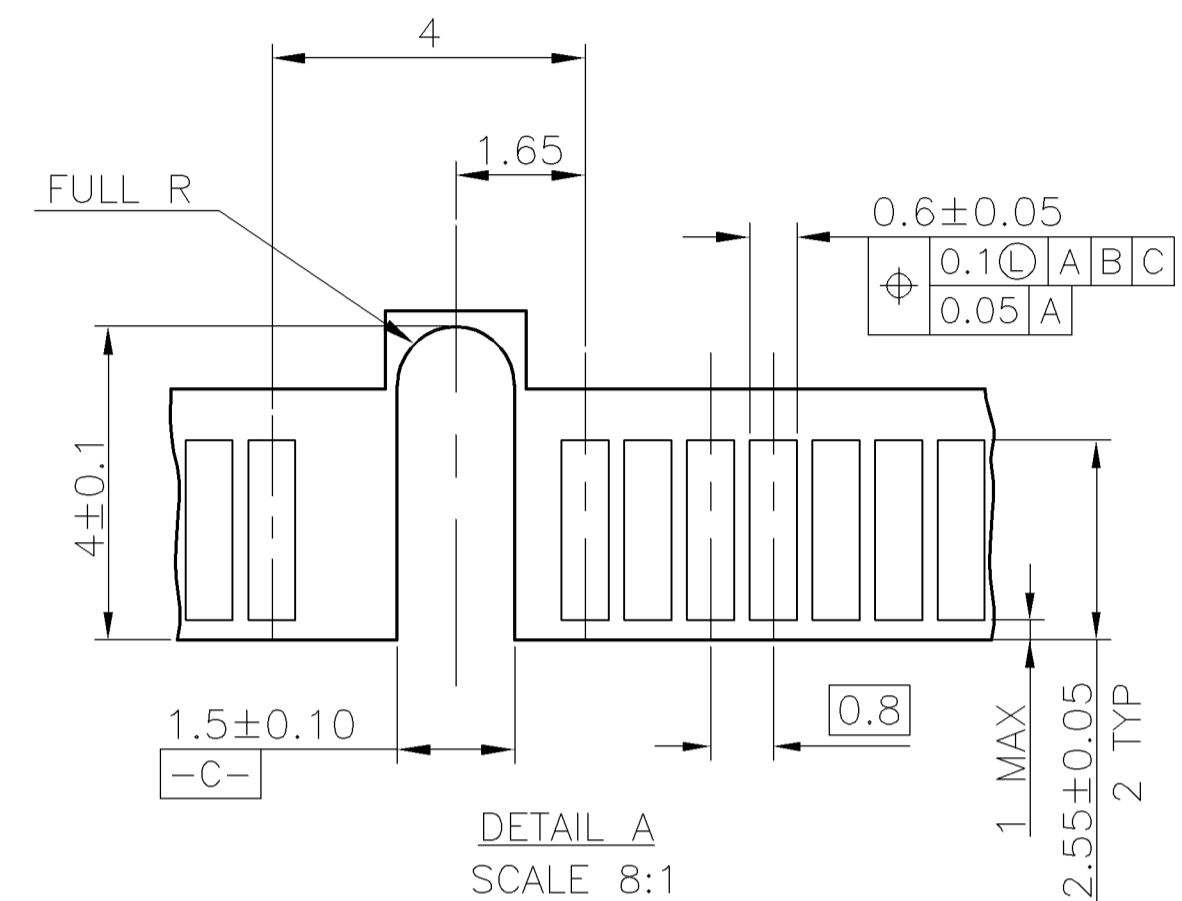
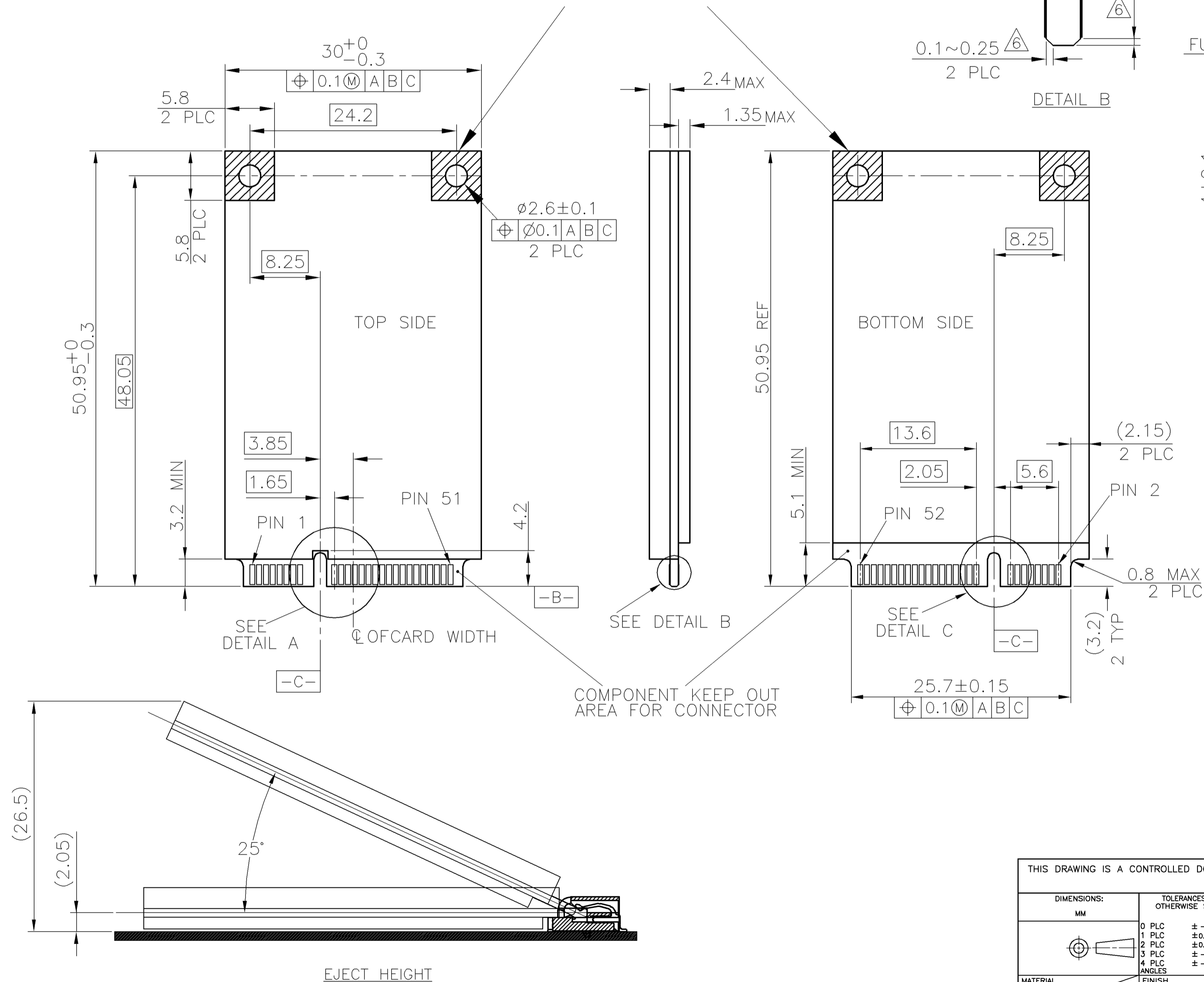
LOC	DIST	REVISIONS					
DW	—	P	LTR	DESCRIPTION	DATE	DWN	APVD
				SEE SHEET 1.			

4. PCI EXPRESS MINI CARD,PCB THICKNESS 1MM.



△5. CARD THICKNESS APPLIES ACROSS TABS AND INCLUDES PLATING AND/OR METALIZATION.

△6. BEVEL MUST BE FREE OF CUTTING BURRS.

COMPONENT AND ROUTING (ALL LAYERS)
KEEP OUT AREA FOR HOLD DOWN SOLUTIONS



DETAIL C
SCALE 8:1

THIS DRAWING IS A CONTROLLED DOCUMENT.		DWN A. WU		05JAN2009		 Tyco Electronics Corporation Taipei, Taiwan	
		CHK S. HOU		05JAN2009			
DIMENSIONS:		TOLERANCES UNLESS OTHERWISE SPECIFIED:		APVD W. KODAMA		NAME	
MM				PRODUCT SPEC		0.8 MM PITCH MINI PCI EXPRESS CONNECTOR ASSEMBLY (4.0MM HEIGHT)	
		0 PLC ± — 1 PLC ±0.3 2 PLC ±0.2 3 PLC ± — 4 PLC ± — ANGLES ± 3°		APPLICATION SPEC			
MATERIAL		FINISH		WEIGHT		RESTRICTED TO	
				—		—	
CUSTOMER DRAWING				SIZE		CAGE CODE	
				A2		00779	
				DRAWING NO		C=2041119	
				SCALE		SHEET	
				—		3 of 4	
				REV		B	

4

3

2

1

THIS DRAWING IS UNPUBLISHED.
RELEASED FOR PUBLICATION
ALL RIGHTS RESERVED.
COPYRIGHT BY TYCO ELECTRONICS CORPORATION.

LOC		DIST		REVISIONS				
DW	—	P	LTR	DESCRIPTION		DATE	DWN	APVD
				SEE SHEET 1.				

D

C

B

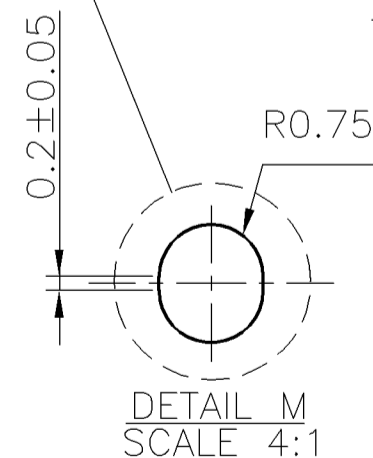
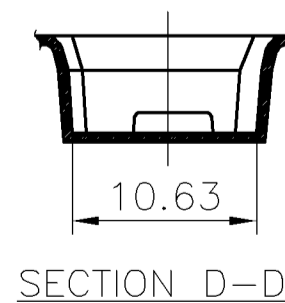
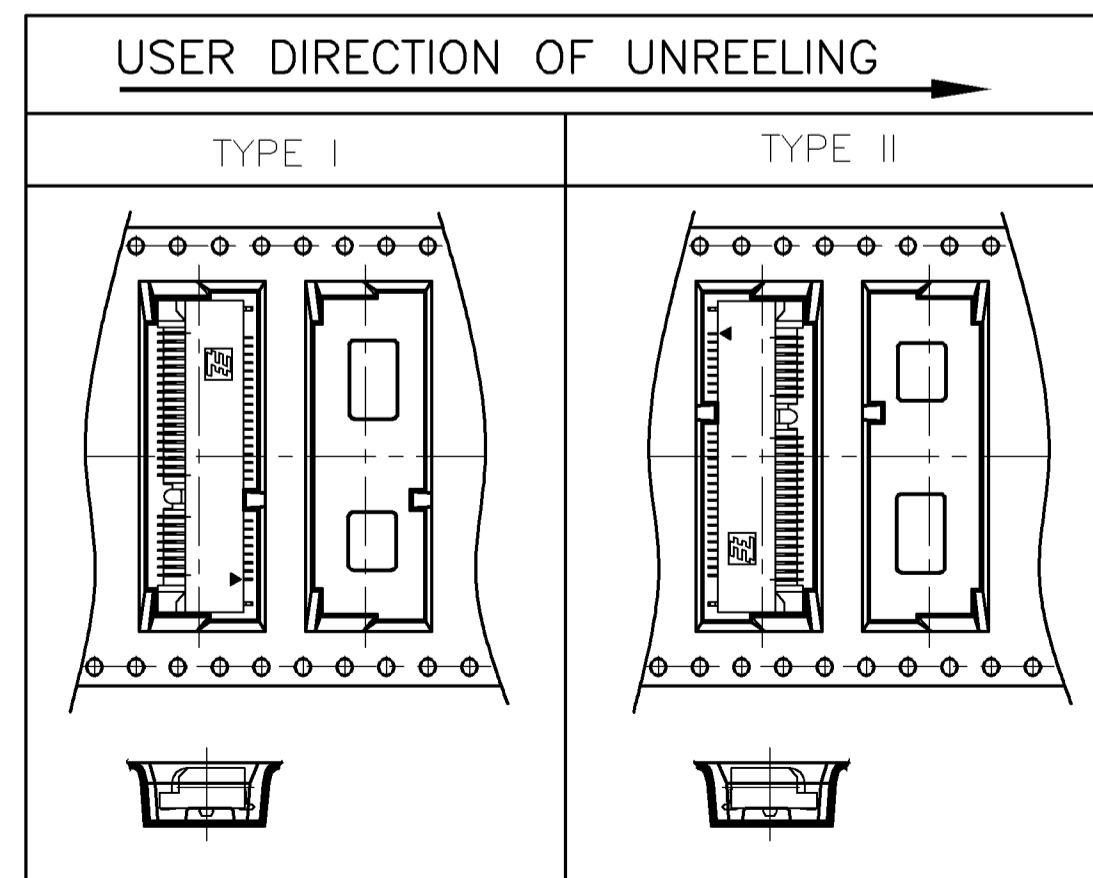
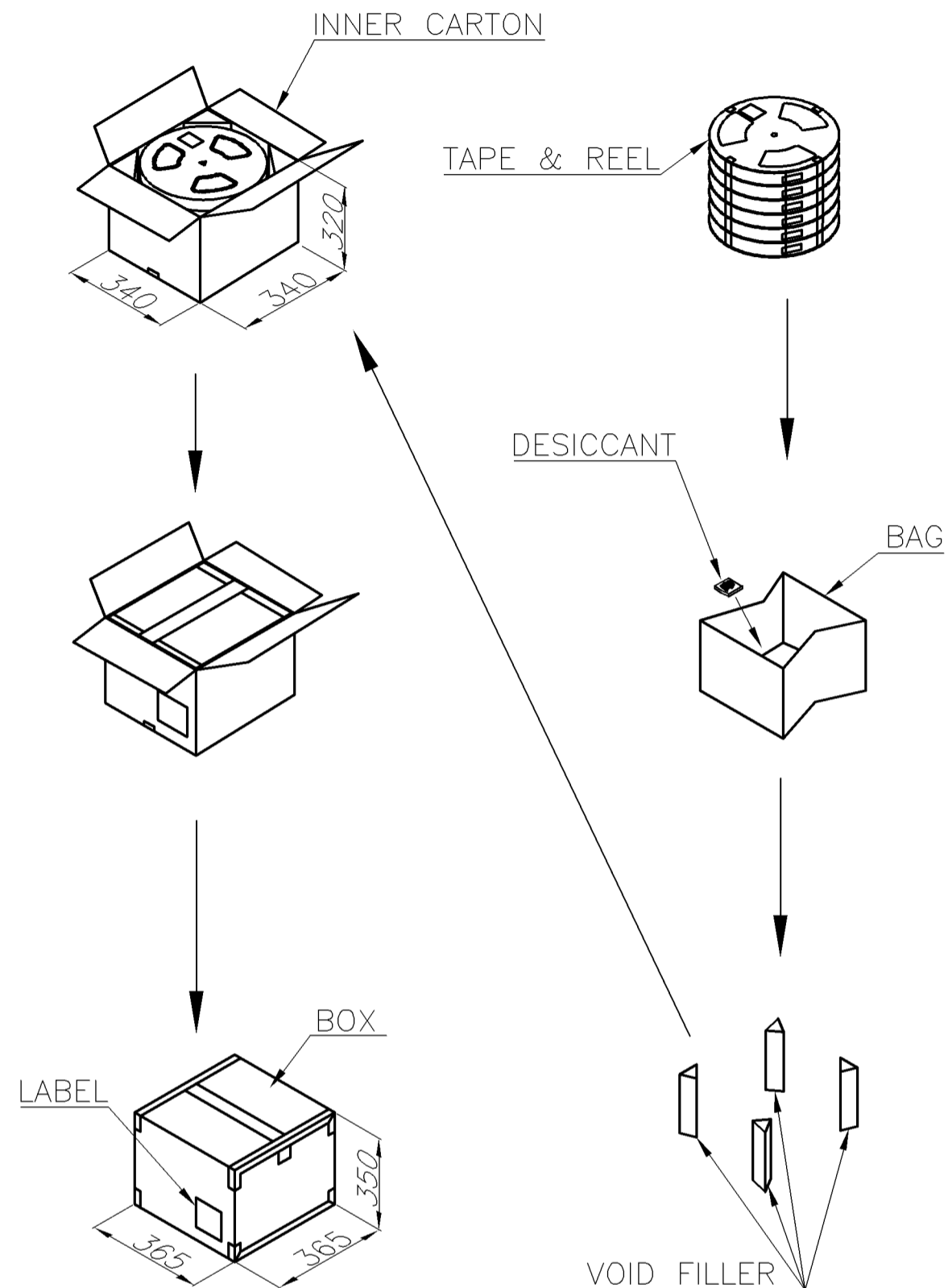
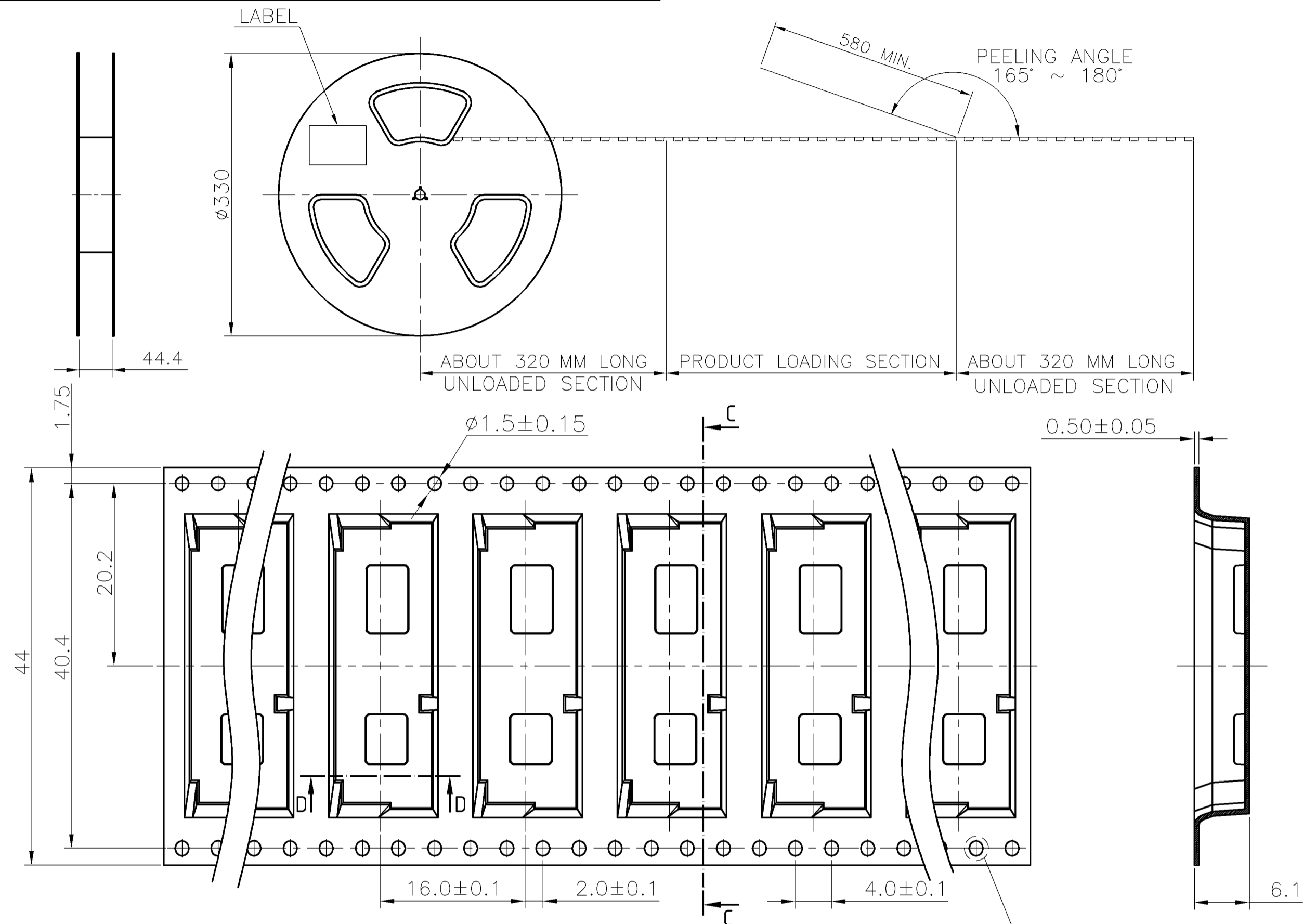
A

D

C

B

A



THIS DRAWING IS A CONTROLLED DOCUMENT.		DWN A. WU	05JAN2009	Tyco Electronics Corporation Taipei, Taiwan	
DIMENSIONS: MM		CHK S. HOU	05JAN2009		
TOLERANCES UNLESS OTHERWISE SPECIFIED:		APVD W. KODAMA	05JAN2009	NAME 0.8 MM PITCH MINI PCI EXPRESS CONNECTOR ASSEMBLY (4.0MM HEIGHT)	
MATERIAL		PRODUCT SPEC	—	SIZE A2	RESTRICTED TO —
FINISH		APPLICATION SPEC	—	CAGE CODE 00779	REV B
WEIGHT		—	—	DRAWING NO C=2041119	—
CUSTOMER DRAWING		—	—	SCALE —	SHEET 4 of 4

3900 PCS	650	6	9.50	4.618
QUANTITY	PCS/ TAPE	REELS/ BOX	G/W(Kg)	N/W(Kg)