

**Productivity Series books are for users who want to become more productive with their PC.**

## **Electronic Alphabet- Using TrueType Fonts for More Creative Desktop Publishing**

Art, science, or both? **The Electronic Alphabet** illustrates that the effective use of fonts is both an art and a science. Studied and applied, effective typography puts power in the word and the work. The right font can convey an attitude, an emotion, the significance of a subject. It can persuade.

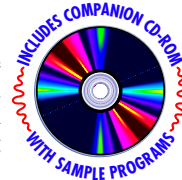
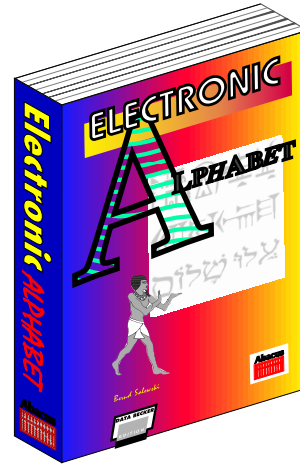
The computer industry gave birth to TrueType fonts, in fact, whole families of fonts. Each as different as fingerprints. Each with its own special font quality. This book helps every communicator understand the history of fonts, their lineage, the "font families", character sets and how they can be used most effectively.

The **Electronic Alphabet** also explains how to design and create your own fonts by using various programs, such as Fontographer, TypeDesigner, and CorelDraw! And if you don't want to design your own, there are numerous sources for fonts, including shareware, which are reviewed in the book.

On the technical side, not scientific, but technical, Windows users will learn how to install and configure fonts in the TrueType, PostScript Type 1, and PCL-V formats. Users will also find tips on solving problems and errors that occur while printing, installing fonts, and deinstalling fonts - some of the realities of working with fonts on computers and with software.

As a special bonus, **Electronic Alphabet** comes with a companion CD-ROM with over 800 fonts, a font manager and a font editor. The font manager has several font viewers, a font archiver, and even lets you print out hard copy of all your fonts. Over 300 MB of font software!

Authors: Bernd Salewski  
Order Item: #B259  
ISBN: 1-55755-259-2  
SRP: \$29.95 US/ \$39.95 CAN with CD-ROM



**To order direct call Toll Free 1-800-451-4319**

In US and Canada add \$5.00 shipping and handling. Foreign orders add \$13.00 per item.  
Michigan residents add 6% sales tax.