

DEFENDER

ARMOURED



ABOVE AND BEYOND





Protection with discretion. Protection with capability. Protection with reassurance. The new Defender Armoured is almost indistinguishable from the standard Defender and has been engineered to meet VR7 level with independent whole vehicle test validation by QinetiQ® in accordance with European Standard BRV 2009 VR7. Of course, nothing comes close to Defender when it comes to taking on, and beating, some of the world's toughest terrain. With its permanent four-wheel drive it gives optimum all-weather performance on and off-road. This capability is uncompromised in the new Defender Armoured and the standard vehicle's payload parameters remain. What's more, it can carry up to seven passengers*, making it the ideal vehicle for organisations such as NGOs and oil or mining companies that work in harsh environments.

*Cost option



Reassurance

Defender Armoured is the first ever 'factory approved' discreetly armoured Defender, which has been developed in conjunction with RMA Group. The new Defender Armoured is validated to B6 level protection by QinetiQ®. It means that the new Defender Armoured has been rigorously tested, and passed, as a complete vehicle – not just the materials and components that have been fitted to it. As an approved product the vehicle maintains its full 50,000 mile (80,000km) manufacturer's warranty and can be repaired or serviced within Land Rover's extensive worldwide network of approved dealers.



Protection

The new Defender Armoured contains bullet resistant glazing, ballistic steel armouring and Kevlar® floor protection which contribute to ensuring the vehicle can withstand an attack from high velocity, high calibre bullets and help to provide optimum occupant protection while being contained within the original 3,500kg gross vehicle weight.



Capability

The additional weight of armoured protection on the new Defender Armoured does not compromise agility and performance with upgrades to the brakes and the addition of OEM heavy duty suspension. The vehicle retains its legendary capability and is ready to take on difficult conditions. Defender Armoured also maintains flexibility and capacity.

Exterior colours

Fuji White
(Solid)



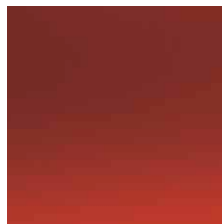
Indus Silver
(Metallic)



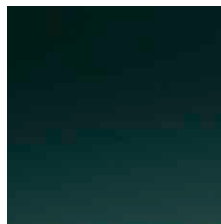
Orkney Grey
(Metallic)



Firenze Red
(Metallic)



Aintree Green
(Metallic)



Keswick Green
(Solid)



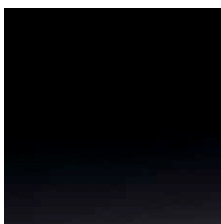
Tamar Blue
(Metallic)



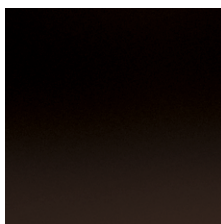
Baltic Blue
(Metallic)



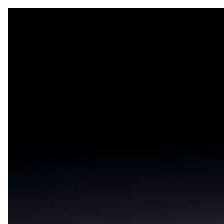
Santorini Black
(Metallic)



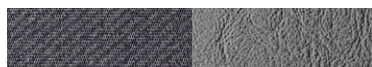
Havana
(Premium)*



Barolo Black
(Premium)*



Trim combinations



Vinyl
Seat face: Twill Vinyl
Seat back and side: Grey Stag Vinyl



Cloth*
Seat face: Black Mondus and Span Cloth



Part Leather*
Seat face: Black Leather and Rack Three Cloth

*Cost option

Armoured standard features

Engineered to meet European Standard EN 1522 Level FB6 (Opaque Armour) and EN 1063 Level BR6 (Transparent Armour) against high velocity assault rifle ballistic protection

Kevlar® floor protection

Manufacturer's three year or 50,000 miles (80,000km) warranty

All-weather heavy duty wheels

Run flat Tyron band Tyre Retention System

OEM heavy duty suspension system

3,500kg braked trailer towing capability

Central door locking

Command driving position

Tinted glass

3,500kg heavy duty chassis

Fire extinguisher (1kg)

Recovery kit

Padded and trimmed rear loadspace

Base vehicle specification

FEATURES	STANDARD
High Torque 2.2L Diesel engine	■
Anti-stall engine management	■
Six-speed manual transmission	■
Front and rear ventilated disc brakes	■
Air conditioning	■

FEATURES	STANDARD DELETE	OPTIONAL
Seven seats		○
Anti-lock Braking System		○
Electronic Traction Control		○
Sunroof	□	
Electric windows	□	

■ Standard □ Standard Delete ○ Optional

Independent options

Anti-tamper exhaust

Global Positioning Satellite (GPS) tracking system

Clear glass

Internal / External Intercom

Under bonnet fire suppressant system

Auxiliary battery and split charge system

Covert lights and siren system**

Water sediment fuel filtration

Raised air intake

Front A-Frame protection bar

Waterproof seat covers

Front and rear lamp guards

Underbody skid plate

First Aid kit

Winch

Seven forward facing seats

Overlaps and splash returns on all doors

Armoured fuel tank

Side step

Fuel burning heater (block only)

Engine kill switch

Locking cubby box

Rear view security camera

**Where legal

Driver training package

Armoured vehicle Driver Training is a tailor-made package available on request. Please contact a member of the Land Rover Armoured team for further information.

Specialist service package

Supplementary Global Aftersales Support is available, on request, to suit customers' every need with Gold, Silver and Bronze packages. These packages are developed for the specific demands of geographical zones with servicing performed by dedicated factory-trained technicians. Please contact a member of the Land Rover Armoured team for further information.

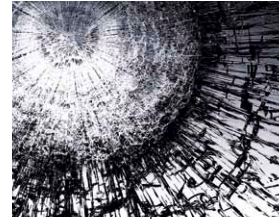


AK-47
Assault Rifle Protection



Magnum .44
Handgun Protection

Bullet Resistant Glazing



M16
Assault Rifle Protection

GPS Tracking System*

Under Bonnet Fire
Suppressant System*

Auxiliary Battery Split
Charge System*

Intercom System

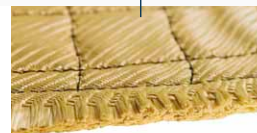
Anti-Tamper
Exhaust*



Heavy Duty Wheel With
Run On Flat Tyre

Ballistic Steel Armouring

Heavy Duty Suspension



Kevlar® Floor Protection



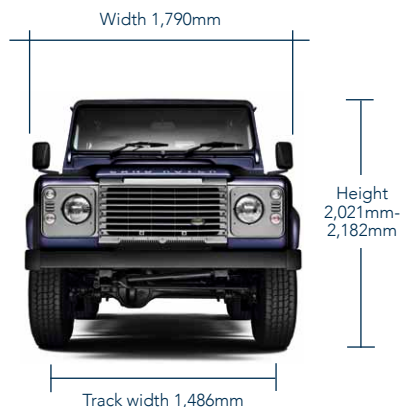
Underfloor Grenade Protection

Armoured Fuel Tank

Diagram for illustrative purposes only. Ballistic integrity is a function of weapon and projectile. Full ballistic details available on enquiry.

*Available as an Independent option.

Dimensions and Capabilities

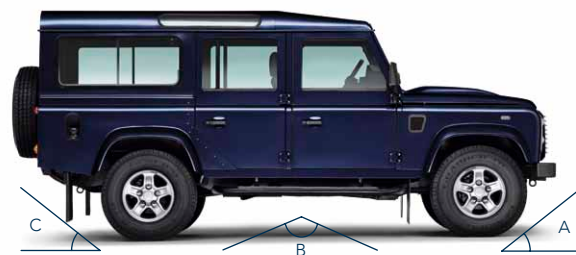
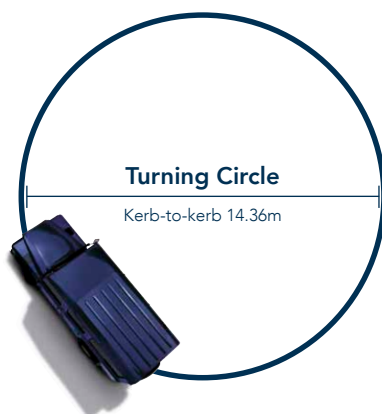


Wading Depth

Maximum wading depth 500mm

Obstacle Clearance

Ground clearance up to 250mm



Geometry	A	B	C
Off-road	Approach Angle 48.7°	Ramp Break 149.7°	Departure Angle 35.6°



BY APPOINTMENT TO
HM THE QUEEN
MANUFACTURERS OF
MOTOR VEHICLES
JAGUAR LAND ROVER LIMITED
COVENTRY



BY APPOINTMENT TO
HRH THE DUKE OF EDINBURGH
MANUFACTURERS OF
MOTOR VEHICLES
JAGUAR LAND ROVER LIMITED
COVENTRY



BY APPOINTMENT TO
HRH THE PRINCE OF WALES
MANUFACTURERS OF
MOTOR VEHICLES
JAGUAR LAND ROVER LIMITED
COVENTRY

Land Rover Approved Vehicle Modifier

Email armoured@landrover.com to have one of our Land Rover Armoured team contact you directly.

landrover.com/armoured

IMPORTANT NOTICE: All Land Rover Armoured vehicles are subject to international export control legislation. Please contact the Armoured team at Land Rover for further information.

Jaguar Land Rover Limited is constantly seeking ways to improve the specification, design and production of its vehicles and alterations take place continually. Whilst every effort is made to produce up to date literature, this brochure should not be regarded as an infallible guide to current specifications, nor does it constitute an offer for the sale of any particular vehicle. Distributors and Dealers are not agents of Jaguar Land Rover Limited by any express or implied undertaking or representation.

The colours reproduced here are subject to the limitations of the printing process and may therefore vary slightly from the actual vehicle. The company reserves the right to alter or withdraw any colour finish without notice. Some of these colours may not be obtainable in your country. Please check availability of colours and current specifications with your Land Rover Dealer.

To maintain the vehicle's discreet appearance, this brochure contains images of both armoured and non-armoured vehicles. For details of all armoured features please contact the Armoured team at Land Rover: armoured@landrover.com

Jaguar Land Rover Limited

Registered Office: Abbey Road, Whitley, Coventry CV3 4LF, United Kingdom.

Registered in England No: 1672070

landrover.com

© Jaguar Land Rover Limited 2013.
Publication Number: LRML 4255/13