



ABOVE & BEYOND

> FIND A RETAILER

> BUILD YOUR OWN

OVERVIEW

SPECIFICATION

RANGE ROVER

SV AUTOBIOGRAPHY



DESIGN

FINISHING TOUCHES

ENGINE, CHASSIS AND DRIVING TECHNOLOGIES



ABOVE & BEYOND

> FIND A RETAILER

> BUILD YOUR OWN

OVERVIEW

SPECIFICATION



RANGE ROVER **SV**AUTOBIOGRAPHY EPITOMISES
SOPHISTICATED DESIGN. OUR MOST LUXURIOUS
SPECIFICATION YET, THIS VEHICLE HAS
BEEN CRAFTED WITH PRECISION AND CARE,
CULMINATING IN EXQUISITE ATTENTION TO DETAIL.



John Edwards
Managing Director of Special Vehicle Operations.



DESIGN

FINISHING TOUCHES

ENGINE, CHASSIS AND DRIVING TECHNOLOGIES



ABOVE & BEYOND

> FIND A RETAILER

> BUILD YOUR OWN

OVERVIEW

SPECIFICATION



SVAUTOBIOGRAPHY

Designed and engineered by Special Vehicle Operations (SVO) – Land Rover's centre of excellence for bespoke commissions, luxury editions and performance models – Range Rover SVAutobiography is our most luxurious and alluring Range Rover ever, offering an effortless, elegant and sophisticated driver and passenger experience.

Unless otherwise indicated, vehicle shown throughout is SVAutobiography Long Wheelbase with Duo Tone Paint in Corris Grey and Santorini Black.

This is apparent in the celebrated design, precision engineering and unrivalled levels of refinement that have come together to create the pinnacle of Range Rover in SVAutobiography.



SPECIAL VEHICLE
OPERATIONS

DESIGN

FINISHING TOUCHES

ENGINE, CHASSIS AND DRIVING TECHNOLOGIES



ABOVE & BEYOND

> FIND A RETAILER

> BUILD YOUR OWN

OVERVIEW

SPECIFICATION



DESIGN

EXTERIOR



Craftsmanship never goes out of style and some 45 years of expertise in designing Range Rover is manifested in each SVAutobiography. Unique features include 'RANGE ROVER' front and rear script with a dark knurled effect edged in Bright Chrome, an exclusive SVAutobiography rear badge, front grille with Graphite Atlas mesh and Bright Chrome inserts.

Flowing lines and distinctive, contemporary elegant design features do much to turn heads. Yet, under the light all-aluminum body beats the heart of a Land Rover, ensuring the precise balance between capability and composure is fully realised.

DESIGN

FINISHING TOUCHES

ENGINE, CHASSIS AND DRIVING TECHNOLOGIES



ABOVE & BEYOND

> FIND A RETAILER

> BUILD YOUR OWN

OVERVIEW

SPECIFICATION



Each vehicle is created with design cues such as chrome side vent accents, signature rear lamps and unique wheels complemented by luxury finishes throughout. It is the definitive expression of comfort and style.

To reflect your personal taste, the option of exterior Duo Tone Paint allows customers to specify the vehicle in one of nine colours below the waistline with a Santorini Black finish above the waistline to produce a prestigious appearance. There is also an extended Autobiography colour palette which includes additional options, such as premium metallics and chromaflair paints.



DESIGN

FINISHING TOUCHES

ENGINE, CHASSIS AND DRIVING TECHNOLOGIES



ABOVE & BEYOND

> FIND A RETAILER

> BUILD YOUR OWN

OVERVIEW

SPECIFICATION



DESIGN

INTERIOR

Image shown right in Cirrus Semi-Aniline leather with Figured Macassar Wood Veneer, Long Wheelbase vehicle.

The interior of Range Rover SVAutobiography is the epitome of refined and sophisticated living. Soft, supple and alluring to the touch, only the very finest perforated Semi-Aniline leathers are featured within the cabin. Sourced from one establishment, the hides are tanned through an organic process that features bark extract from Black Wattle trees. Sustainable woods and generous veneers on the centre console and fascia add to the sense of natural craft and refinement.

Flooding the interior with light, the standard sliding panoramic roof enhances the feeling of space and a connection to the world outside. Yet, at the touch of a button, the driver and passengers can feel cocooned once more as the full-length power blind glides into place.

DESIGN

FINISHING TOUCHES

ENGINE, CHASSIS AND DRIVING TECHNOLOGIES



ABOVE & BEYOND

> FIND A RETAILER

> BUILD YOUR OWN

OVERVIEW

SPECIFICATION



DISTINCT FINISHES

The distinguishing knurled finish from the Range Rover script on the bonnet and tailgate is continued in the interior with features such as rotary drive selectors and armrest adjusters.

The sophisticated and refined look continues with knurled detailing on the foot pedals, Start/Stop button and solid metal coat hooks. The key fob also has knurled detailing and Autobiography script. These are complemented by Satin Brushed cupholder inserts and solid metal seat rail finishers.

DESIGN

FINISHING TOUCHES

ENGINE, CHASSIS AND DRIVING TECHNOLOGIES



ABOVE & BEYOND

> FIND A RETAILER

> BUILD YOUR OWN

OVERVIEW

SPECIFICATION



DISTINCT FINISHES

The distinguishing knurled finish from the Range Rover script on the bonnet and tailgate is continued in the interior with features such as rotary drive selectors and armrest adjusters.

The sophisticated and refined look continues with knurled detailing on the foot pedals, Start/Stop button and solid metal coat hooks. The key fob also has knurled detailing and Autobiography script. These are complemented by Satin Brushed cupholder inserts and solid metal seat rail finishers.

DESIGN

FINISHING TOUCHES

ENGINE, CHASSIS AND DRIVING TECHNOLOGIES



ABOVE & BEYOND

> FIND A RETAILER

> BUILD YOUR OWN

OVERVIEW

SPECIFICATION



DISTINCT FINISHES

The distinguishing knurled finish from the Range Rover script on the bonnet and tailgate is continued in the interior with features such as rotary drive selectors and armrest adjusters.

The sophisticated and refined look continues with knurled detailing on the foot pedals, Start/Stop button and solid metal coat hooks. The key fob also has knurled detailing and Autobiography script. These are complemented by Satin Brushed cupholder inserts and solid metal seat rail finishers.

DESIGN

FINISHING TOUCHES

ENGINE, CHASSIS AND DRIVING TECHNOLOGIES



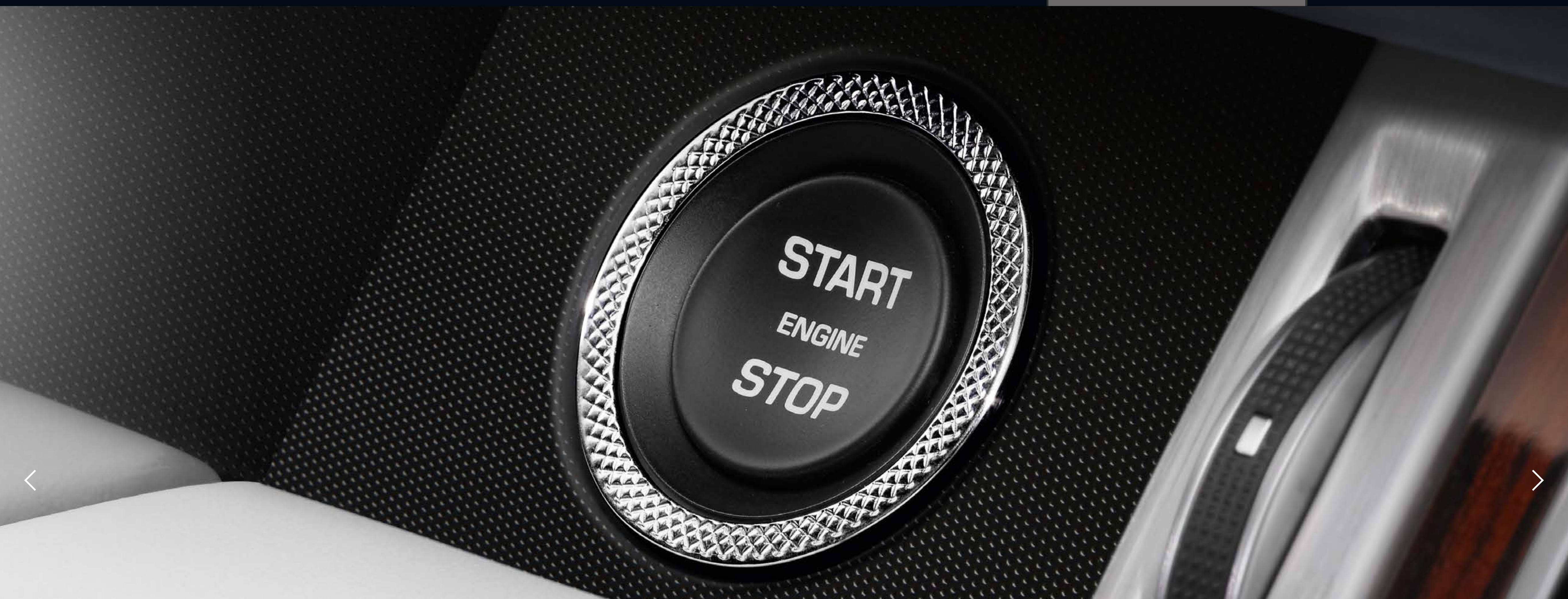
ABOVE & BEYOND

> FIND A RETAILER

> BUILD YOUR OWN

OVERVIEW

SPECIFICATION



DISTINCT FINISHES

The distinguishing knurled finish from the Range Rover script on the bonnet and tailgate is continued in the interior with features such as rotary drive selectors and armrest adjusters.

The sophisticated and refined look continues with knurled detailing on the foot pedals, Start/Stop button and solid metal coat hooks. The key fob also has knurled detailing and Autobiography script. These are complemented by Satin Brushed cupholder inserts and solid metal seat rail finishers.



DESIGN

FINISHING TOUCHES

ENGINE, CHASSIS AND DRIVING TECHNOLOGIES



ABOVE & BEYOND

> FIND A RETAILER

> BUILD YOUR OWN

OVERVIEW

SPECIFICATION



DESIGN

FINISHING TOUCHES

ENGINE, CHASSIS AND DRIVING TECHNOLOGIES



ABOVE & BEYOND

> FIND A RETAILER

> BUILD YOUR OWN

OVERVIEW

SPECIFICATION

REAR SEAT ENVIRONMENT

The rear cabin is beautifully appointed throughout; the executive seat console includes a bottle chiller compartment, power deployable tables with USB charging socket incorporated and climate controls.

Massage seats are standard on both body styles, with further enhancements such as power recline of up to 17 degrees and a calf rest on Long Wheelbase. Stowage facilities come readily to hand and deep twist pile mohair carpet mats complete the feeling of sumptuous luxury.

Image shown right in Cirrus Semi-Aniline leather with Figured Macassar Wood Veneer, Long Wheelbase vehicle.

DESIGN

FINISHING TOUCHES

ENGINE, CHASSIS AND DRIVING TECHNOLOGIES



ABOVE & BEYOND

> FIND A RETAILER

> BUILD YOUR OWN

OVERVIEW

SPECIFICATION

FINISHING TOUCHES

LOADSPACE FLOOR AND EVENT SEATING

The focus on impeccable craftsmanship is well illustrated by the option of a wooden sliding loadspace floor. Made from aluminium and veneer, the floor extends rearwards to optimise practicality and ease of use for loading and unloading. Our SVO team has also developed optional 'Event Seating', hand crafted from beautiful Windsor leather with a highly durable aluminium frame. Stowed in the luggage compartment, these can be quickly and easily deployed to provide comfortable seating for two adults on the lower tailgate when the vehicle is stationary.



DESIGN

FINISHING TOUCHES

ENGINE, CHASSIS AND DRIVING TECHNOLOGIES



ABOVE & BEYOND

> FIND A RETAILER

> BUILD YOUR OWN

OVERVIEW

SPECIFICATION



MERIDIAN SOUND SYSTEM

One of our most established British partners, Meridian, has created the Meridian Signature Reference System used in Range Rover SVAutobiography, as standard. With 29 speakers, the 1700W featured system delivers an exceptional

purity of sound that you feel as well as hear. Meridian Trifield 3D* technology provides greater control of the surround and side channels delivering a truly personal three-dimensional concert hall experience in every seat.

*Trifield and the “three fields” device is a trademark of Trifield Productions Ltd.
Meridian is a registered trademark of Meridian Audio Ltd.



DESIGN

FINISHING TOUCHES

ENGINE, CHASSIS AND DRIVING TECHNOLOGIES



ABOVE & BEYOND

> FIND A RETAILER

> BUILD YOUR OWN

OVERVIEW

SPECIFICATION



REAR SEAT ENTERTAINMENT

The Rear Seat Entertainment System has eight-inch screens built into the front headrest on Standard Wheelbase. 10.2 inch front seat mounted screens are provided on Long Wheelbase. 'Journey Status' a navigation summary screen which displays a pop-up for the rear occupants detailing the time and distance to destination is also included. Both body styles come with a pair of WhiteFire® digital wireless headphones which are stored in a special armrest compartment at the rear together with the remote control for the entertainment system.

WhiteFire® is a registered trademark of Unwired Technology LLC and any use of such marks by Land Rover under licence.

DESIGN

FINISHING TOUCHES

ENGINE, CHASSIS AND DRIVING TECHNOLOGIES



ABOVE & BEYOND

> FIND A RETAILER

> BUILD YOUR OWN

OVERVIEW

SPECIFICATION



ENGINE, CHASSIS AND DRIVING TECHNOLOGIES

ENGINE

Exclusive to SVAutobiography and new to the Range Rover line-up is a superb 550PS V8 Supercharged engine. It combines peerless refinement with the most powerful engine in Range Rover's history. First seen on Range Rover Sport SVR, the all-aluminium 5.0 litre engine has been re-tuned. It produces an output of 550PS and 680Nm, with maximum torque available at 3,500-4,000rpm.

The choice of other Petrol, Diesel and Hybrid powertrains is also available for SVAutobiography. All provide an optimum blend of outstanding performance and in-gear flexibility, no matter how challenging the terrain.

CHASSIS

The chassis for the Standard Wheelbase 550PS version has been re-engineered to ensure a more driver focused experience, whereas other Standard Wheelbase and all Long Wheelbase versions delight with the overall sense of unparalleled comfort.

DESIGN

FINISHING TOUCHES

ENGINE, CHASSIS AND DRIVING TECHNOLOGIES



ABOVE & BEYOND

> FIND A RETAILER

> BUILD YOUR OWN

OVERVIEW

SPECIFICATION



ENGINE, CHASSIS AND DRIVING TECHNOLOGIES

DRIVING TECHNOLOGIES

With true Land Rover capability at its heart, the Range Rover SVAutobiography delivers incredible off-road performance. Our unique Terrain Response 2* system is designed to monitor driving conditions and automatically optimise driveability and traction by adapting the responses of the vehicle's engine, gearbox, centre differential and chassis systems to match the demands of the terrain.

*Not available on SDV6 Hybrid Diesel.

All-Terrain Progress Control* works seamlessly alongside the Terrain Response 2 to enable drivers to set and maintain a steady speed between 2kph and 30kph in challenging conditions, allowing the driver to maintain full concentration on steering and finding a path through obstacles.

Range Rover SVAutobiography can also call upon a unique suite of all-terrain technologies such as Hill Descent Control and optional Wade Sensing, which complements the vehicle's impressive 900mm wading depth by using sensors in the wing mirrors and alerting the driver if the water is too deep.

DESIGN

FINISHING TOUCHES

ENGINE, CHASSIS AND DRIVING TECHNOLOGIES



ABOVE & BEYOND

> FIND A RETAILER

> BUILD YOUR OWN

OVERVIEW

SPECIFICATION

RANGE ROVER **SV**AUTOBIOGRAPHY OFFERS AN EXCLUSIVE RANGE OF OPTIONS THAT ALLOW YOU TO PERSONALISE YOUR VEHICLE.

The following pages take you through a logical series of steps to create a Range Rover SVAutobiography to suit your lifestyle. There are lots of choices: from selecting your body style to exterior and interior colours, wheels, finishes and those detailed touches to enable you to make Range Rover SVAutobiography truly yours.

If you would like to bring your options to life, go to our online configurator at **landrover.com**

> VIEW STYLES

> VIEW COLOURS

> VIEW WHEELS

> VIEW INTERIORS

> VIEW FEATURES

1

2

3

4

5

STEP 1
CHOOSE YOUR BODY STYLE

You can choose between Standard and Long Wheelbase versions.

STEP 2
CHOOSE YOUR COLOUR

There is a wide range on offer to enable you to express yourself.

STEP 3
CHOOSE YOUR WHEELS

There are three unique styles, each one designed to complement the elegant exterior.

STEP 4
CHOOSE YOUR INTERIOR

Carefully selected colours complemented by wood veneers. You can personalise your own interior space.

STEP 5
CHOOSE YOUR FEATURES

A summary of exterior and interior features available.

> VIEW TECHNICAL DETAILS

TECHNICAL DETAILS

All you need to know about dimensions, performance specifications and key data.

STYLE

COLOUR

WHEELS

INTERIOR

FEATURES

TECHNICAL DETAILS

1 CHOOSE YOUR BODY STYLE



STANDARD WHEELBASE

With its unmistakable pedigree, Range Rover's features epitomise modern British design.

Vehicle shown above is Standard Wheelbase in Valloire White Pearl, with 22 inch seven-spoke High Gloss Polished finish 'Style 706' wheels.



The finesse and individuality is inherent with such aspects as a panoramic roof emphasising the overall sense of wellbeing and serenity.

Visit **landrover.com** for more information.



LONG WHEELBASE

Range Rover Long Wheelbase is instantly recognisable. This body style has unique features such as a distinctive 'L' badge mounted behind each front wheel arch. And though the exterior length has been extended by 200mm, its silhouette remains unaffected.



Enhanced legroom by 186mm and passenger seat calf support in the second row delivers even greater heights of comfort and refinement. The Long Wheelbase also comes with rear window powered sun blinds.

Visit **landrover.com** for more information.



ABOVE & BEYOND

> FIND A RETAILER

> BUILD YOUR OWN

OVERVIEW

SPECIFICATION

2



STYLE

COLOUR

WHEELS

INTERIOR

FEATURES

TECHNICAL DETAILS

CHOOSE YOUR COLOUR

There are seventeen distinctive exterior colours including solid, metallic and premium metallic. Further enhance the look by selecting a contrast roof with a choice of Indus Silver or Santorini Black.

Optional Roof Colour

Contrast Indus Silver

not available

not available

not available

not available

not available



Contrast Santorini Black



Body and Roof Colour

Fuji White
(Solid)



Yulong White*
(Metallic)



Aleutian Silver**
(Metallic)



Indus Silver*
(Metallic)



Kaikoura Stone*
(Metallic)



Firenze Red
(Metallic)



Montalcino Red*
(Metallic)



Aintree Green*
(Metallic)



Loire Blue*
(Metallic)



*Available as Duo Tone paint option

**Not available from October 2015.

Optional Roof Colour

Contrast Indus Silver



Contrast Santorini Black



Body and Roof Colour

Scotia Grey
(Metallic)

Corris Grey*
(Metallic)

Santorini Black
(Metallic)

Aruba*
(Premium Metallic)

Waitomo Grey*
(Premium Metallic)

Carpathian Grey
(Premium Metallic)

Barolo Black
(Premium Metallic)

Mariana Black
(Premium Metallic)

*Available as Duo Tone paint option



AUTOBIOGRAPHY PALETTE

Available in seventeen colours, this premium range includes metallic and chromaflair finishes that are only available with Autobiography and SVAutobiography. Further enhance the look by selecting a contrast roof with either Indus Silver or Santorini Black.

Optional Roof Colour

Contrast Indus Silver



Contrast Santorini Black



Body and Roof Colour

Meribel White
(Autobiography)

Verbier Silver
(Autobiography)

Rio Gold
(Autobiography)

Madagascar Orange
(Autobiography)

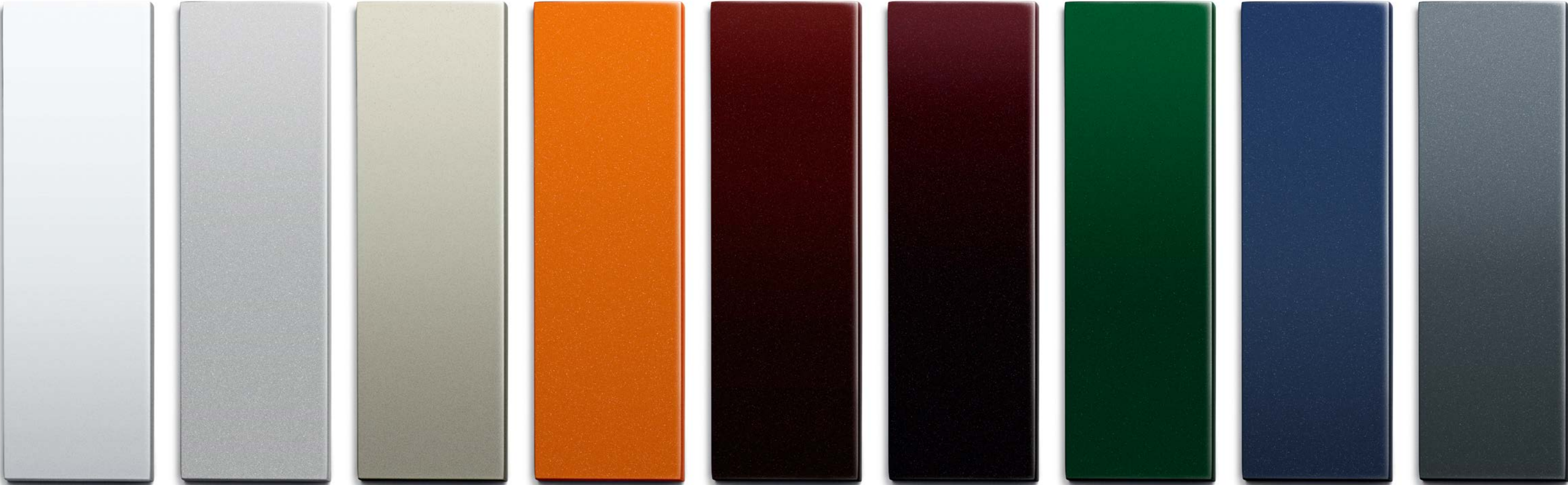
Ruffina Red
(Autobiography)

Mescalito Black
(Autobiography)

British Racing Green
(Autobiography)

Balmoral Blue
(Autobiography)

Windward Grey
(Autobiography)





ABOVE & BEYOND

> FIND A RETAILER

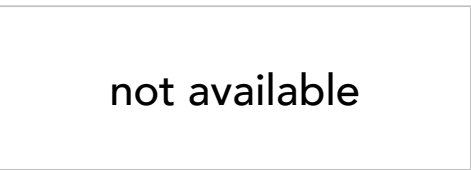
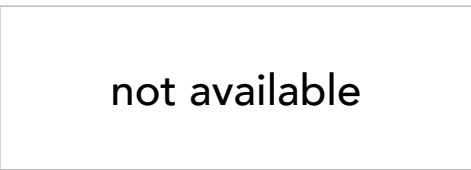
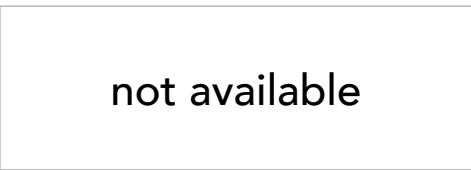
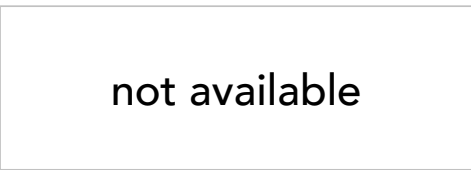
> BUILD YOUR OWN

OVERVIEW

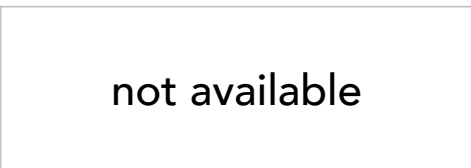
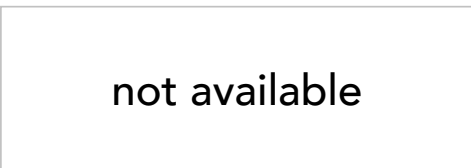
SPECIFICATION

Optional Roof Colour

Contrast Indus Silver



Contrast Santorini Black



Body and Roof Colour

Scafell Grey
(Autobiography)



Bosphorus Grey
(Autobiography)



Borealis Black
(Autobiography)



Ligurian Black
(Autobiography)



Valloire White Pearl
(Autobiography Premium)



Spectral
British Racing Green
(Autobiography Premium)



Spectral Blue
(Autobiography Premium)



Spectral Racing Red
(Autobiography Premium)



STYLE

COLOUR

WHEELS

INTERIOR

FEATURES

TECHNICAL DETAILS



ABOVE & BEYOND

> FIND A RETAILER

> BUILD YOUR OWN

OVERVIEW

SPECIFICATION

DUO TONE PAINT SCHEMES

For the ultimate in style, individuality and finish, there is a choice of nine colours complemented by Santorini Black above the vehicle’s waistline. The Duo Tone paint scheme is exclusive to SVAutobiography.

Upper Colour

Contrast Santorini Black



Lower Colour

- Yulong White
Duo Tone (Metallic)
- Indus Silver
Duo Tone (Metallic)
- Aruba Duo Tone
(Premium Metallic)
- Kaikoura Stone
Duo Tone (Metallic)
- Corris Grey
Duo Tone (Metallic)
- Montalcino Red
Duo Tone (Metallic)
- Aintree Green
Duo Tone (Metallic)
- Loire Blue
Duo Tone (Metallic)
- Waitomo Grey
Duo Tone (Premium Metallic)



STYLE

COLOUR

WHEELS

INTERIOR

FEATURES

TECHNICAL DETAILS



ABOVE & BEYOND

> FIND A RETAILER

> BUILD YOUR OWN

OVERVIEW

SPECIFICATION

3 CHOOSE YOUR WHEELS

There are three unique wheels for SVAutobiography.

The standard 21 inch seven-spoke 'Style 706', the 22 inch seven-spoke 'Style 706', both in High Gloss Polished finish, and only for the Standard Wheelbase 550PS model there is an optional 22 inch seven split-spoke 'Style 707' with Dark Grey Full Gloss finish.

Other core fit wheels are available; please contact your Land Rover Retailer for further information.



**21 INCH SEVEN-SPOKE
'STYLE 706'
WITH HIGH GLOSS POLISHED FINISH**

Standard wheel on both bodystyles.



**22 INCH SEVEN-SPOKE
'STYLE 706'
WITH HIGH GLOSS POLISHED FINISH***

Not available on Standard Wheelbase 550PS model.



**22 INCH SEVEN SPLIT-SPOKE
'STYLE 707'
WITH DARK GREY FULL GLOSS FINISH**

Only available on Standard Wheelbase 550PS model.

Visit landrover.com for more information.

STYLE

COLOUR

WHEELS

INTERIOR

FEATURES

TECHNICAL DETAILS



ABOVE & BEYOND

> FIND A RETAILER

> BUILD YOUR OWN

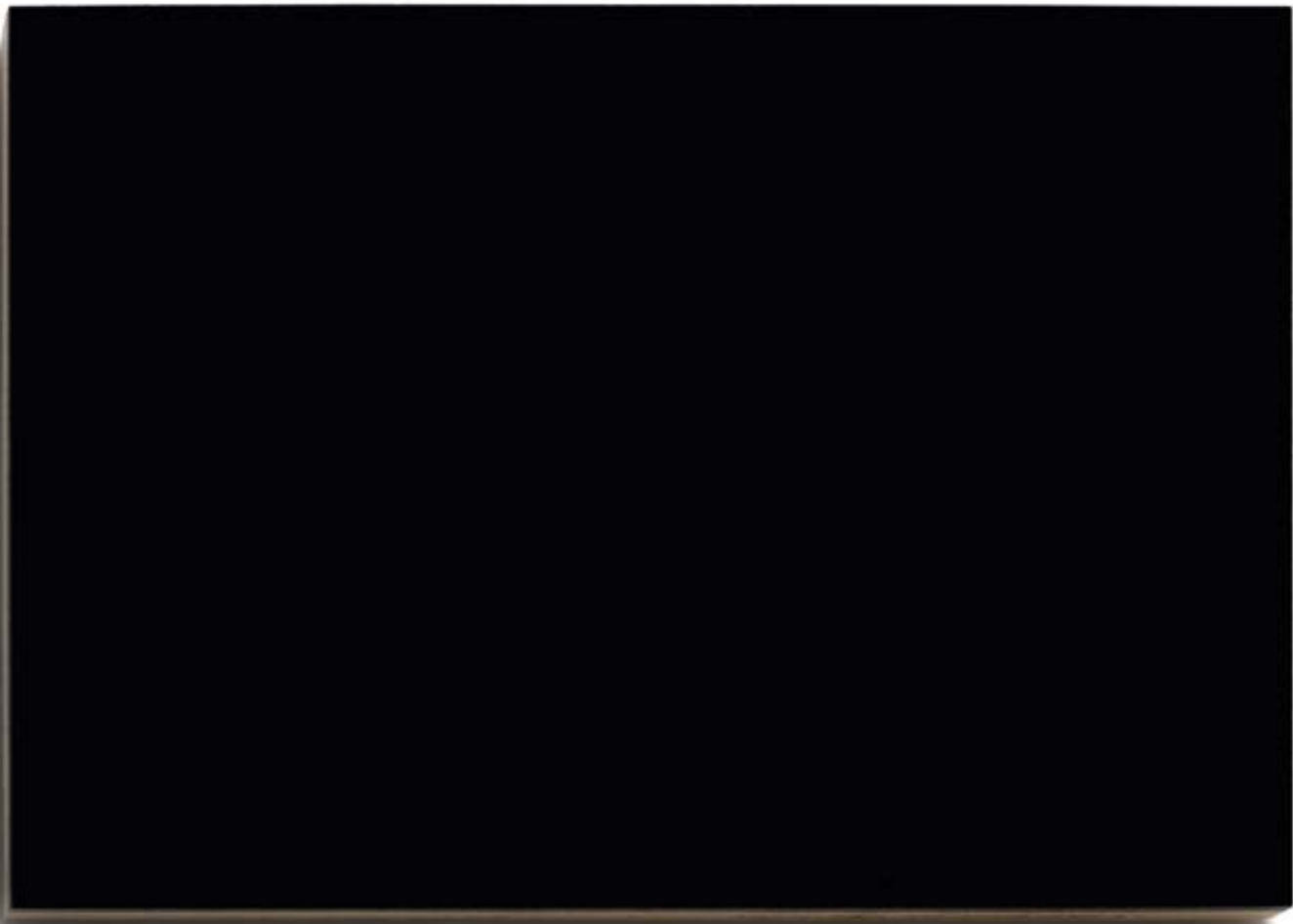
OVERVIEW

SPECIFICATION

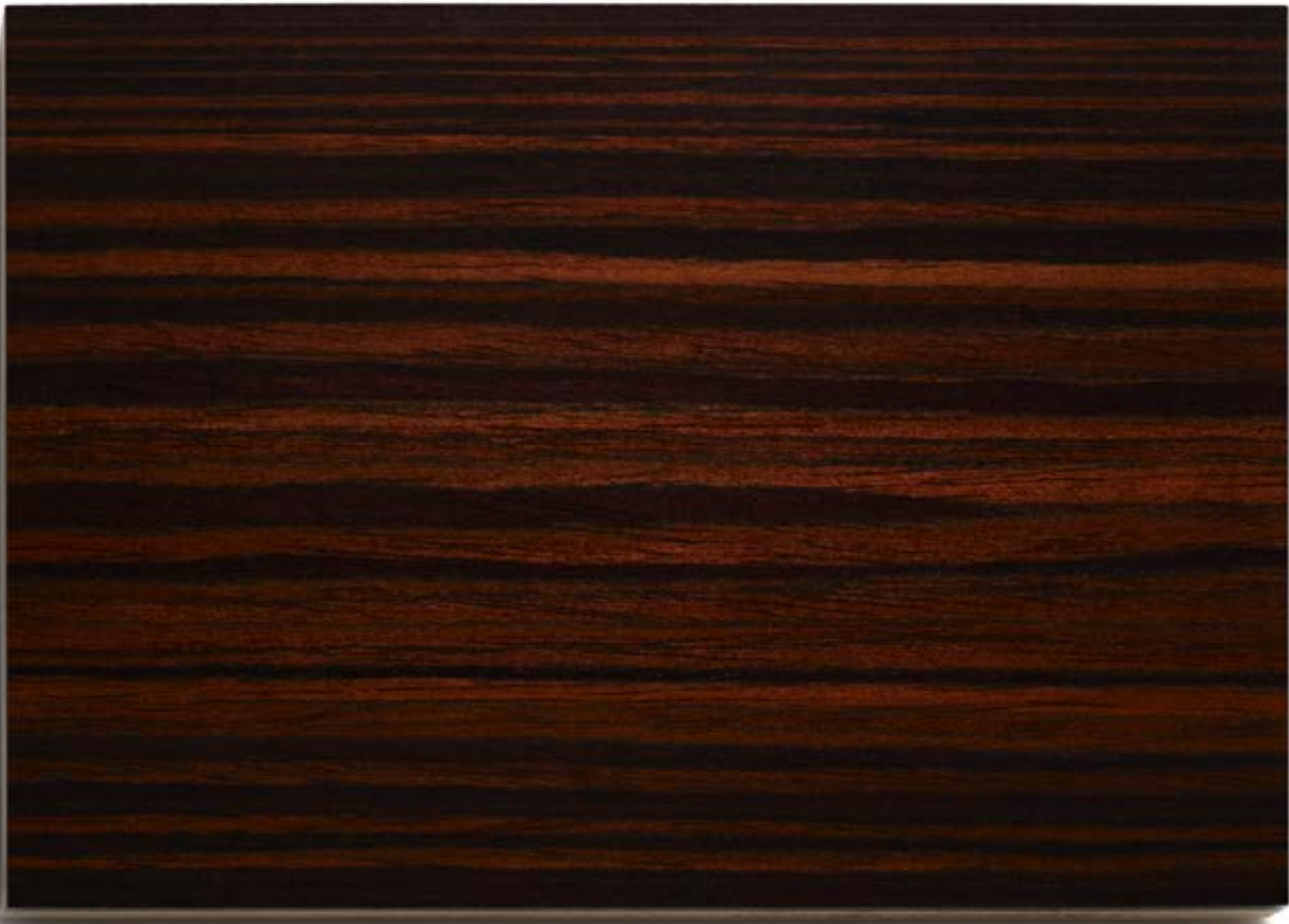
4

CHOOSE YOUR INTERIOR –
LEATHER AND WOOD VENEERS

There are three warm wood veneers and five leather colourways in various textures to choose from. Touches such as double stitching on every surface and precise attention to detail exceed expectations.



GRAND BLACK WOOD VENEER



FIGURED MACASSAR WOOD VENEER



SHADOW WALNUT WOOD VENEER

Visit [landrover.com](https://www.landrover.com) for more information.

STYLE

COLOUR

WHEELS

INTERIOR

FEATURES

TECHNICAL DETAILS



ABOVE & BEYOND

> FIND A RETAILER

> BUILD YOUR OWN

OVERVIEW

SPECIFICATION



STYLE

COLOUR

WHEELS

INTERIOR

FEATURES

TECHNICAL DETAILS



ABOVE & BEYOND

> FIND A RETAILER

> BUILD YOUR OWN

OVERVIEW

SPECIFICATION

CHOOSE YOUR INTERIOR – COLOUR COMBINATIONS

Key designers have chosen those colour permutations that best reflect the refined, composed spirit of Range Rover SVAutobiography.

LUNAR / CIRRUS



STYLE

COLOUR

WHEELS

INTERIOR

FEATURES

TECHNICAL DETAILS



ABOVE & BEYOND

> FIND A RETAILER

> BUILD YOUR OWN

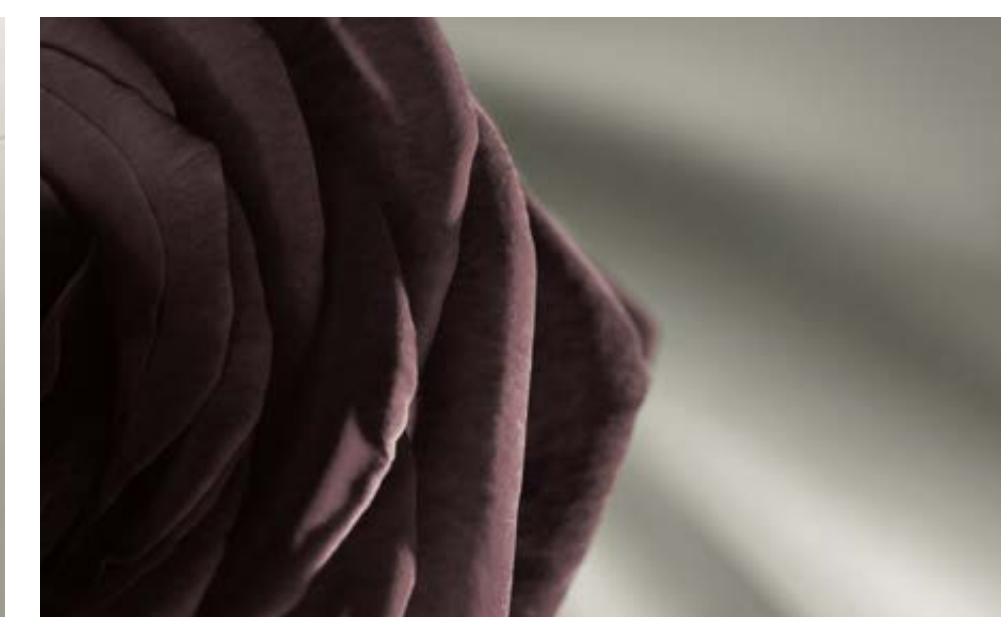
OVERVIEW

SPECIFICATION

CHOOSE YOUR INTERIOR – COLOUR COMBINATIONS

Key designers have chosen those colour permutations that best reflect the refined, composed spirit of Range Rover SVAutobiography.

DARK CHERRY / IVORY



STYLE

COLOUR

WHEELS

INTERIOR

FEATURES

TECHNICAL DETAILS



ABOVE & BEYOND

> FIND A RETAILER

> BUILD YOUR OWN

OVERVIEW

SPECIFICATION

CHOOSE YOUR INTERIOR – COLOUR COMBINATIONS

Key designers have chosen those colour permutations that best reflect the refined, composed spirit of Range Rover SVAutobiography.

ESPRESSO / TAN



STYLE

COLOUR

WHEELS

INTERIOR

FEATURES

TECHNICAL DETAILS



ABOVE & BEYOND

> FIND A RETAILER

> BUILD YOUR OWN

OVERVIEW

SPECIFICATION

CHOOSE YOUR INTERIOR – COLOUR COMBINATIONS

Key designers have chosen those colour permutations that best reflect the refined, composed spirit of Range Rover SVAutobiography.

NAVY / IVORY



STYLE

COLOUR

WHEELS

INTERIOR

FEATURES

TECHNICAL DETAILS



ABOVE & BEYOND

> FIND A RETAILER

> BUILD YOUR OWN

OVERVIEW

SPECIFICATION

CHOOSE YOUR INTERIOR – COLOUR COMBINATIONS

Key designers have chosen those colour permutations that best reflect the refined, composed spirit of Range Rover SVAutobiography.

EBONY / LUNAR



STYLE

COLOUR

WHEELS

INTERIOR

FEATURES

TECHNICAL DETAILS



ABOVE & BEYOND

> FIND A RETAILER

> BUILD YOUR OWN

OVERVIEW

SPECIFICATION

5

COMPARE YOUR FEATURES

Exterior – Standard Features

- Grille surround in Santorini Black, grille surround inner in Bright Chrome, grille mesh in Dark Atlas (Graphite Atlas on Duo Tone vehicles) with Bright Chrome inserts
- Vent blades and inserts in Atlas
- Body coloured side vent graphic with Bright Chrome inserts
- Santorini Black mirror caps for Long Wheelbase vehicles as standard
- Unique SVAutobiography badge on tailgate
- Sliding panoramic roof (includes power blind)
- Solar attenuating glass (fitted to front windscreen)
- Adjustable, auto dimming, heated, power fold exterior mirrors with approach lamps and memory with auto reverse dipping (approach lamps includes illuminated Range Rover branding)
- Front fog lamps
- Adaptive Xenon headlamps with LED signature lighting, automatic levelling and power wash
- Signature LED rear lamps
- Metallic paint (solid and premium metallic paints also available*)
- 21 inch seven-spoke High Gloss Polished finish wheels, unique to SVAutobiography*
- Full size spare wheel
- Terrain Response® 2
- Dynamic Response
- Non-heated windscreen
- Soft door close.

Exterior – Optional Features

- Contrast roof (available in Indus Silver or Santorini Black)
- Graphite Atlas pack consisting of side vent graphics, front and rear bumper accents, front bumper air intakes and front toweye cover in Graphite Atlas**
- Atlas side vent graphic with Bright Chrome inserts
- Autobiography and Autobiography Premium paint palette
- Duo Tone paint scheme, unique to SVAutobiography
- Electrically deployable towbar (includes electrics and armature)
- 22 inch seven-spoke High Gloss Polished finish wheels, unique to SVAutobiography
- 22 inch seven split-spoke Dark Grey Full Gloss finish wheels, unique to SVAutobiography Standard Wheelbase 550PS
- Locking wheel nuts
- Reduced section spare wheel†
- Tyre pressure monitoring system
- Active rear locking differential
- Heated windscreen.

*Further wheel options available
**Not available with Duo Tone paint scheme
†No Cost Option

Interior – Standard Features

- <

– Semi-Aniline leather seat – 18-way drivers / 18-way passenger front seats, front and rear climate seats, massage front seats with adjustable seat bolsters, driver and passenger memory, rear executive class seating with ski hatch and rear power recline, rear seat massage lumbar and passenger seat away (Long Wheelbase versions include; driver and passenger seat away, driver and passenger upper seat articulation and rear passenger side calf rest)

– Winged headrests front and rear

– Wood veneers choose from Figured Macassar, Grand Black Lacquer** and Shadow Walnut**

– Leather perforated headlining

– Heated wood and leather steering wheel

– Front centre console cooler compartment

– Rear centre chiller compartment

– Rear centre console with electrically deployable tables with Ebony leather

– Four-zone climate control

– Customer configurable interior mood lighting

– Non-smokers pack (stowage bin in lieu of ash tray)

– Mohair deep pile carpet mats with leather edging

– Unique SVAutobiography pedals with knurled metal finish

– Illuminated aluminium treadplates with unique Autobiography lettering

– Perimetric alarm with engine immobilisation

>

- Parallel Parking / Parking Exit / Perpendicular Parking / 360° Park Distance Control

– Front Parking Aid with front visual display

– Surround camera system

– Keyless entry

– Power upper and lower tailgate

– Bluetooth® phone connection

– Meridian™ Signature Reference Audio system (1700W)

– Digital TV†

– Touch-screen with Dual View Technology which allows the driver and passenger to view completely independent display content; for example, the driver can use the Satellite Navigation System, while the front seat passenger is able to watch a DVD or TV (includes one set of wireless headphones)

– Rear seat entertainment system with remote control with eight-inch screens (includes two sets of wireless headphones) (only available for Standard Wheelbase vehicles)

– Rear seat entertainment system with remote control with 10.2 inch screens (includes two sets of wireless headphones) (only available for Long Wheelbase vehicles)

– Rear passenger footrests in luxury deep pile mohair

– Ski Hatch

– Rear window powered sun blinds (only available for Long Wheelbase vehicles).

Interior – Optional Features

- Heated leather steering wheel**

– Smokers pack (front and rear cigar lighter and ash tray)

– Volumetric alarm (includes battery back up sounder)

– First aid kit

– Blind spot monitor, closing vehicle sensing and reverse traffic detection

– Wade Sensing™

– HomeLink®

– Adaptive Cruise Control with queue assist and intelligent emergency braking

– Remote park heat with timed climate

– Extra large additional washer bottle

– Loadspace rails and lockable cross beam**

– Tailgate Event Seating

– Veneer Sliding Loadspace floor

– Veneer finish on deployable tables.

**No Cost Option

†Whilst Jaguar Land Rover continue to work closely with developing TV standards worldwide, we unfortunately cannot guarantee the TV feature in all countries due to undergoing changes to the broadcast TV standards. The current supported standard can be switched off ahead of any published dates resulting in potential loss of the TV feature in the vehicle.

The Bluetooth® word mark and logos are owned by the Bluetooth SIG, Inc. and any use of such marks by Land Rover is under licence.



ABOVE & BEYOND

> FIND A RETAILER

> BUILD YOUR OWN

OVERVIEW

SPECIFICATION

DIMENSIONS AND CAPABILITIES



Long Wheelbase (LWB) 3.120mm



Height
SWB 1.835mm
LWB 1.840mm

Front wheel track 1.690mm



Front wheel track 1.690mm



Obstacle Clearance

Off-road height 296,1mm
Standard ride height 220,5mm

Standard Ride Height

With roof rails 1.836mm (LWB 1.840mm)
With panoramic roof open 1.874mm (LWB 1.880mm)
Access height air suspension setting will reduce each of the above by 50mm

Loadspace Capacity

Rear seats upright
Height 824mm, Width 1.290mm
Loadspace volume 909 litres
Loadspace width between arches 1.120mm
Length at floor 1.101mm

Rear seats forward
Height 824mm, Width 1.290mm
Loadspace volume 2.030 litres (LWB 2.345 litres)
Loadspace width between arches 1.120mm
Length at floor 1.985mm (LWB 2.177mm)

Headroom

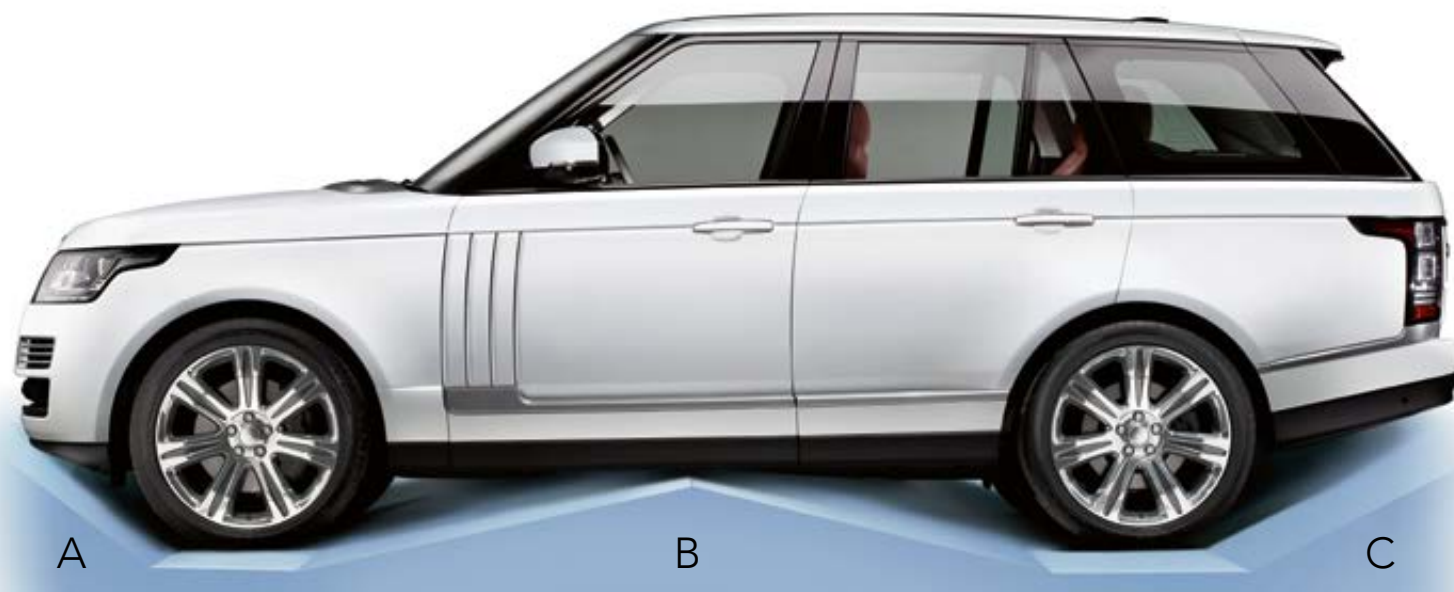
Maximum front headroom with panoramic roof 997mm
Rear headroom 976mm (LWB 973mm)

Turning Circle

Kerb-to-Kerb 12,1m (LWB 13,0m)
Wall-to-wall 12,5m (LWB 13,4m)
Turns lock-to-lock 3,03

Wading Depth

Maximum wading depth 900mm



	A	B	C
Ride Height			
Off-road SWB / LWB	34,7°	28,3°/26,1°	29,6°
Standard SWB / LWB	26,0°	20,1°/18,3°	24,6°



Please note: Figures relate to both Standard (SWB) and Long Wheelbase (LWB) models unless stated.

STYLE

COLOUR

WHEELS

INTERIOR

FEATURES

TECHNICAL DETAILS



ABOVE & BEYOND

> FIND A RETAILER

> BUILD YOUR OWN

OVERVIEW

SPECIFICATION

TECHNICAL SPECIFICATION, PERFORMANCE AND KEY DATA

	DIESEL			PETROL
	TDV6	SDV6 HYBRID	SDV8	V8 SUPERCHARGED
	258	340	339	550
POWER (PS)				
ENGINE DATA				
Capacity (cc)	2.993	2.993	4.367	5.000
No. of cylinders	6	6	8	8
Cylinder layout	Longitudinal V6	Longitudinal V6	Longitudinal V8	Longitudinal V8
Valves per cylinder	4	4	4	4
Bore (mm)	84	84	84	92,5
Stroke (mm)	90	90	98,5	93
Compression ratio (:1)	16,1	16,1	16,1	9,5
Maximum power kW (PS) / rpm	190 (258) / 3.500	250 (340) / 4.000*	250 (339) / 3.500	405 (550) / 6.000-6.500
Maximum torque Nm / rpm	600 / 2.000	700 / 1.500-1.750*	740 / 1.750-2.250	680 / 3.500-4.000
BRAKES				
Front type	Ventilated disc	Ventilated disc	Ventilated disc	Ventilated disc
Front diameter (mm)	350	380	380	380
Rear type	Ventilated disc	Ventilated disc	Ventilated disc	Ventilated disc
Rear diameter (mm)	350	365	365	365
Park Brake	Electric Park Brake (EPB) integrated into brake caliper	Electric Park Brake (EPB) integrated into brake caliper	Electric Park Brake (EPB) integrated into brake caliper	Electric Park Brake (EPB) integrated into brake caliper
WEIGHTS (KG)				
Weight from (LWB)	2.215 (2.351)	2.466 (2.539)	2.467 (2.560)	2.465 (2.523)
Maximum laden weight (LWB)	3.050 (3.080)	3.200 (3.250)	3.230 (3.250)	3.100
Maximum mass on each axle (front)	1.500	1.590	1.590	1.500
Maximum mass on each axle (rear)	1.775	1.775	1.775	1.775
TOWING (KG)				
Unbraked trailer	750	750	750	750
Maximum towing	3.500	3.000	3.500	3.000
Maximum coupling point / nose weight	150	120	150	150
Maximum vehicle and trailer combination / Gross Train Weight	6.500	6.100	6.700	6.650
ROOF CARRYING (KG)				
Maximum roof load (including Roof Rails)	100	100	100	100
PERFORMANCE AND FUEL ECONOMY				
Maximum speed (kph)	210	218	218	225
Acceleration (secs) 0-100kph (LWB)	7,9 (8,3)	6,9 (6,9)	6,9 (7,2)	5,4 (5,5)
Urban l/100km (mpg)	7,8 (36,2)	6,8 (41,5)	10,8 (26,2)	18,3 (15,4)
Extra Urban l/100km (mpg)	6,4 (44,1)	5,9 (47,9)	7,6 (37,2)	9,8 (29,0)
Combined l/100km (mpg)	6,9 (40,9)	6,2 (45,6)	8,4 (33,6)	12,8 (22,1)
CO2 Urban emissions g/km	204	177	281	426
CO2 Extra Urban emissions g/km	168	154	198	228
CO2 Combined emissions g/km	182	164	219	299
Fuel tank capacity – usable (litres)	89	89	105	105
Diesel Particulate Filter (DPF)	4	4	4	–

■ Standard – Not Available

Please note: Figures relate to both Standard (SWB) and Long Wheelbase (LWB) models unless stated.

Visit [landrover.com](https://www.landrover.com) for more information.

STYLE

COLOUR

WHEELS

INTERIOR

FEATURES

TECHNICAL DETAILS



ABOVE & BEYOND

> FIND A RETAILER

> BUILD YOUR OWN

OVERVIEW

SPECIFICATION



BY APPOINTMENT TO
HM THE QUEEN
MANUFACTURERS OF
MOTOR VEHICLES
JAGUAR LAND ROVER LIMITED
COVENTRY



BY APPOINTMENT TO
HRH THE DUKE OF EDINBURGH
MANUFACTURERS OF
MOTOR VEHICLES
JAGUAR LAND ROVER LIMITED
COVENTRY



BY APPOINTMENT TO
HRH THE PRINCE OF WALES
MANUFACTURERS OF
MOTOR VEHICLES
JAGUAR LAND ROVER LIMITED
COVENTRY

IMPORTANT NOTICE: Jaguar Land Rover Limited is constantly seeking ways to improve the specification, design and production of its vehicles and alterations take place continually. Whilst every effort is made to produce up to date literature, this brochure should not be regarded as an infallible guide to current specifications, nor does it constitute an offer for the sale of any particular vehicle. Distributors and Retailers are not agents of Jaguar Land Rover Limited by any express or implied undertaking or representation.

All Land Rover Approved Accessories fitted by a Land Rover Retailer within one month or 1.600 kilometres/1.000 miles (which ever occurs first) of the handover of a new registered vehicle will benefit from the same warranty terms and period of cover as the vehicle warranty. Accessories purchased outside of these parameters will be subject to a 12 month unlimited mileage warranty. All Land Rover Approved Accessories are rigorously tested to the same exacting standards as those applied to our vehicles. Performance in extreme hot and cold temperatures, corrosion resistance, impact and airbag deployment highlight some of the exhaustive product testing carried out to ensure accessories are both durable and importantly, continue to comply with current legislation.

All our accessories are designed to be an integral part of Land Rover vehicles. While many items such as roof carriers are simple to fit, some products require specialist tools and diagnostic equipment to ensure correct integration with the vehicle structure and electrical systems. These products vary from market to market, please consult your Land Rover Retailer who will be pleased to advise you on current specifications and any query you may have.

The colours reproduced here are subject to the limitations of the printing process and may therefore vary slightly from the actual vehicle. The company reserves the right to alter or withdraw any colour finish without notice. Some of these colours may not be obtainable in your country. Please check availability of colours and current specifications with your Land Rover Retailer.

Castrol EDGE Professional exclusively recommended by Land Rover.

Jaguar Land Rover Limited Registered Office:
Abbey Road, Whitley, Coventry CV3 4LF
United Kingdom.

Registered in England and Wales: Number 1672070

landrover.com

© Jaguar Land Rover Limited 2015.

Keep me informed



STYLE

COLOUR

WHEELS

INTERIOR

FEATURES

TECHNICAL DETAILS