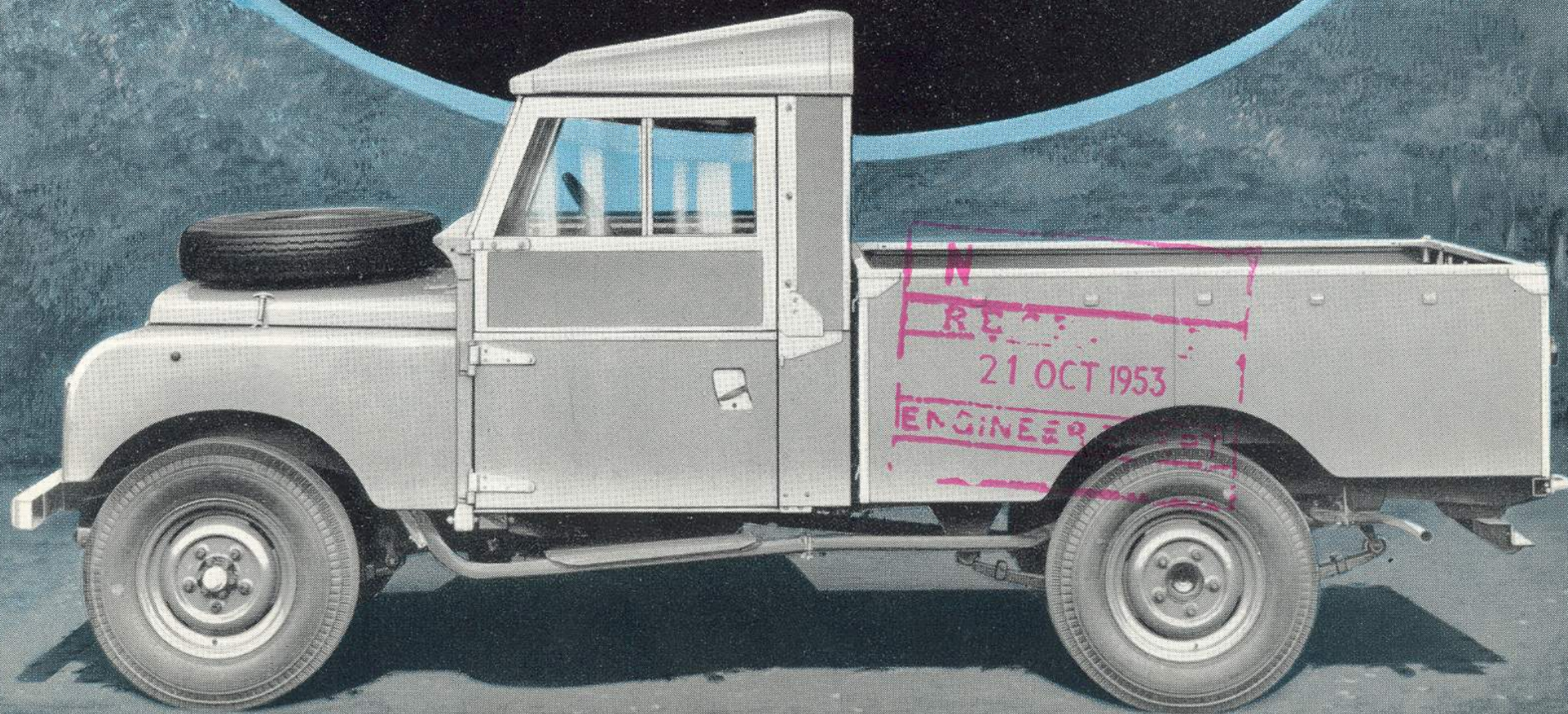


The
LAND
ROVER
4-WHEEL DRIVE
PICK-UP TRUCK

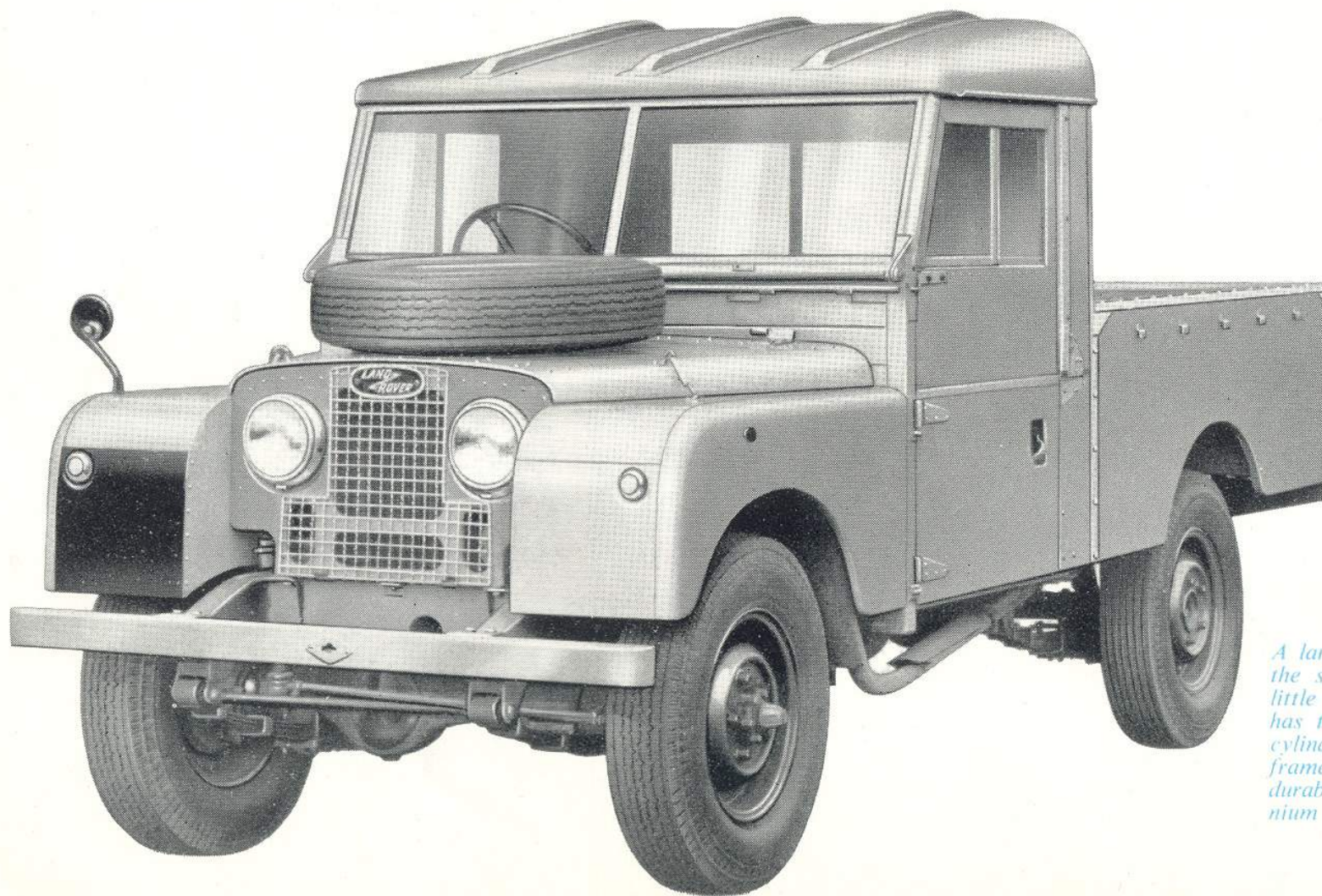




THE LAND-ROVER PICK-UP TRUCK

Here is a vehicle offering all the features which have earned the Land-Rover world renown—strength, durability and an amazing appetite for hard work—PLUS a roomy truck body. On or off the road the Land-Rover Pick-up Truck, with its 4-wheel drive and eight forward speeds (two reverse) is the ideal load-carrier, taking steep slopes, rough open ground, sand, mud, scrub, snow or ice in its unfaltering stride—taking you and your load through where others fail! For any job which entails long journeys in difficult terrain, this is the perfect vehicle. There's plenty of carrying space in the rear section, 57 in. wide and a full 6 ft. long.

The Pick-up Truck is offered in two versions—the standard vehicle and the "De Luxe" model, similar externally but with interior refinements which are listed opposite.

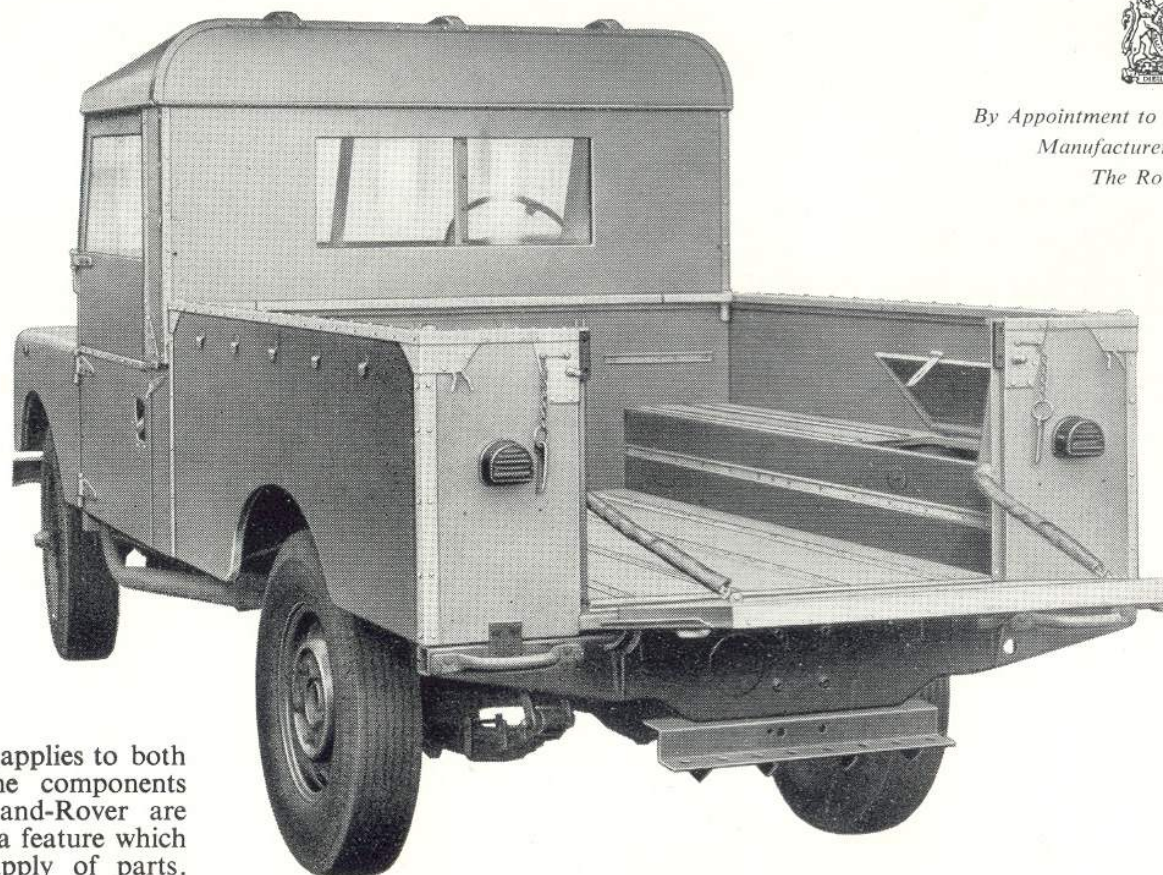


A larger Land-Rover—with many of the successful features of its tough little partner! The Pick-up Truck has the same powerful 52 b.h.p. 4-cylinder engine, the same rigid chassis frame construction and the same durable, corrosion resistant aluminium alloy body panels.



By Appointment to the late King George VI
Manufacturers of Land-Rovers
The Rover Co. Ltd.

A 6-ft. long rear section provides ample load space for extra-bulky loads. There are handy lockers in the rear wheel-arches. A canvas hood to cover the rear section is available as an optional extra, also a tonneau cover.



CHASSIS SPECIFICATION

(Standard & "De Luxe" Models)

The abbreviated specification given here applies to both Pick-up Truck models. Many of the components employed on the short wheelbase Land-Rover are common to the Pick-up Truck chassis, a feature which greatly facilitates servicing and the supply of parts.

ENGINE

No. of cylinders 4.
Bore 77.8 mm.—3.063ins.
Stroke 105 mm.—4.134ins.
Cylinder capacity 1,997 c.c.—121.9 cu.ins.
Maximum B.H.P. 52 at 4,000 r.p.m.
Maximum torque 101 lb/ft. at 1,500 r.p.m.

Compression ratio 6.8—1.
Three bearing crankshaft, overhead inlet and side exhaust valves, hydraulic camshaft chain adjuster, pressurised radiator, oil pump intake and by-pass oil filters and oil bath air cleaner.

TRANSMISSION

Provision for eight forward speeds and two reverse and two- or four-wheel drive by means of transfer gearbox.

Main Gearbox	Transfer box	
	High ratio	Low ratio
First gear	16.171	40.688
Second gear	11.026	27.742
Third gear	7.435	18.707
Top gear	5.396	13.578
Reverse gear	13.745	34.585
Final drive ratio	4.7—1	

Four-wheel drive is fitted for optional selection when high transfer gear is in use but is engaged automatically when low transfer gear is in operation.

TYRES 7.00 x 16.

BRAKES

Hydraulically-operated foot brakes.
Hand operated transmission brake mounted on rear of gearbox.

BODY

Body panels are made of non-corrodible light alloy, all external steel fittings are heavily galvanised.

DIMENSIONS

Overall length 173½ins.
Overall width 62½ins.
Overall height 78ins. (unladen) without rear hood.
Overall height 83½ins. (unladen) with rear hood.
Wheelbase 107ins. Track 50ins. Ground clearance 8½ins. Turning circle 50ft.
Unladen weight 3,088 lbs.

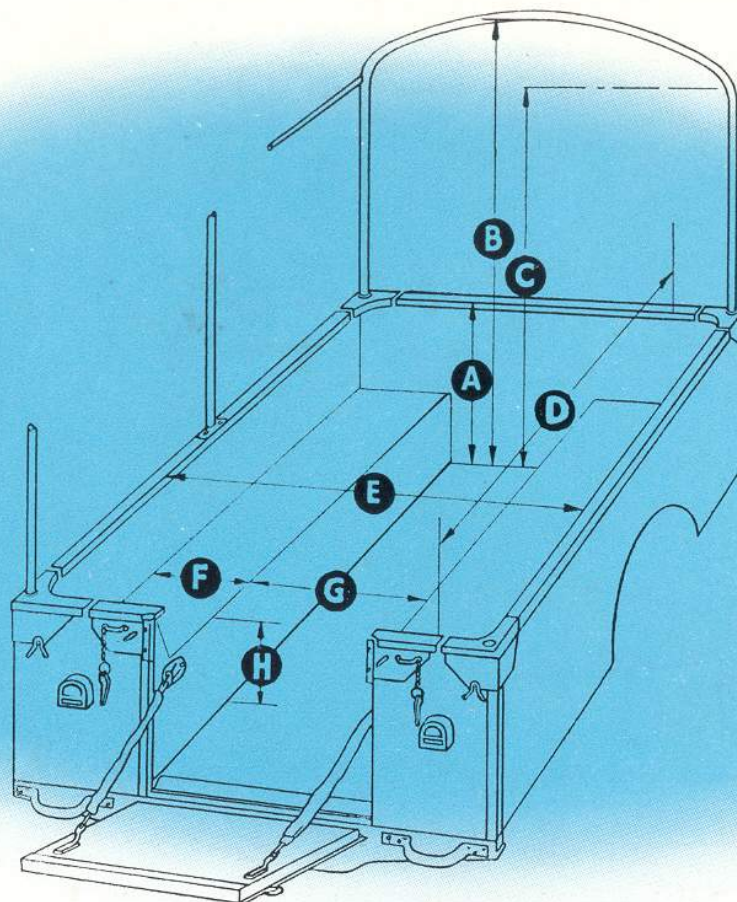
PAY LOAD

Driver, two passengers in front; 1,120 lbs.

THE "DE-LUXE" PICK-UP MODEL

With the same tough chassis and external appearance, the "De Luxe" model has the following additions to the cab:—
Front cab head-lining of plastic covered felt. Rear panel of cab lined with blue leather-cloth. Doors fitted with pockets and lined with blue leather-cloth and padded waist lines. Door locks. Dash panel and parcel compartment lined with blue leather-cloth. Plastic covered felt floor mats. Cab interior roof light and switch. 3 cushions and thick one-piece back-rest covered in plastic woven fabric.





BODY DIMENSIONS

	IN.	CM.		IN.	CM.
A	20 $\frac{1}{2}$	52.07	E	57	144.78
B	53	134.62	F	12	30.48
C	47	119.38	G	36 $\frac{1}{4}$	92.08
D	72 $\frac{3}{4}$	184.78	H	8 $\frac{11}{16}$	22.07

OPTIONAL EXTRAS

The following is a selection of the optional extras available on both standard and "De Luxe" models:

Hood covering rear section,
with windows front
and rear.

Front capstan winch.
Trafficators.
Tonneau cover for rear section.

Heater and demister.
Tropical roof for cab.
Rear seats and back-rests.

Radio.
Extra windscreen wiper.
Canvas spare wheel cover.

COLOUR SCHEMES

Both vehicles are available either in Grey finish with Blue wheels or in Blue finish with Grey wheels.

Persons dealing in the Company's goods are not the agents of the Company and have no authority whatsoever to bind the Company by any expressed or implied undertaking.

The name Land-Rover is a Registered Trade Mark of the Rover Company Limited.

THE ROVER COMPANY LIMITED

SOLIHULL • BIRMINGHAM • ENGLAND

Telephone: Sheldon 2461.

Telegrams: Rover, Solihull.

Service Depot: SOLIHULL.

Telegrams: Rovrepair, Solihull.

London Showrooms: DEVONSHIRE HOUSE, PICCADILLY, W.1. Telephone: GROsvenor 3252.

London Service Depot: SEAGRAVE RD., FULHAM, S.W.6. Telephone: FULham 1221. Telegrams: Rovrepair, Wesphone, London.