



**Softback & Hardback Owner's Guide**

**Soft-back & Hard-back Instructieboekje**

**Capote et hard-top guide de l'utilisateur**

**Verdeck und hardtop handbuch**

**Manualetto dell'utente per le capotine soffice e rigida**

**Capota trasera y techo rigido guia del propietario**

**Capota de lona e capota rígida traseiras  
guia do proprietário**





# SOFTBACK & HARDBACK OWNER'S GUIDE

---

## Contents

<i>Cleaning the Softback .....</i>	<i>2</i>
<i>Folding the Softback .....</i>	<i>4</i>
<i>Unfolding the Softback .....</i>	<i>8</i>
<i>Removing the Softback .....</i>	<i>12</i>
<i>Fitting the Softback .....</i>	<i>14</i>
<i>Removing the Hardback .....</i>	<i>18</i>
<i>Fitting the Hardback .....</i>	<i>19</i>
<i>Removing the Roof Bars .....</i>	<i>22</i>
<i>Fitting the Roof Bars .....</i>	<i>23</i>

---



# ***Cleaning the Softback***

---

## **WARNING!**

*DO NOT use abrasive or solvent cleaners on the canopy and especially NOT on the removable window panels.*

*Use only mild detergents.*

## **Cleaning the softback canopy**

Use a soft brush to remove dust and flaking dirt from the canopy (not the windows), then soak with a mild soap and water solution to soften encrusted dirt and remove stains, prior to washing.

Wash the softback using a mild soap and water solution before rinsing the canopy with clean lukewarm or cold water. Rinse until all traces of soap are removed from the canopy.

Never use spirit, petrol or chlorine based cleaning agents, or wash/wax compounds to clean the canopy and windows.

Never use an automatic car wash, or a high pressure hose.

Do not aim jets of water at zips or seals.

Ensure the softback is dry before folding or removing.

Improper cleaning and lack of care may cause damage to the canopy and window panels, resulting in water penetration.

## **IMPORTANT**

*The removable window panels fitted to the softback, are susceptible to scratching from the effects of dirt and grit. For this reason, it is important to wash them frequently.*

*Always stow the window panels in the bag provided when not in use - ensure the panels are dry before stowing.*

---

## **Cleaning the softback windows**

DO NOT use brushes, solvents, petrol, hot water, strong detergents or abrasive cleaners on the window panels.

Wipe off any dust or dirt using a damp soft cloth.

DO NOT wipe the window panels when they are dry.

Wash the windows with a clean, grit-free sponge or cloth and a mixture of a mild dishwashing detergent and cold or lukewarm water. Rinse the window panels thoroughly and wipe with a soft moist cloth.

Remove frost, ice and snow using lukewarm water - do not use a scraper. Take care when clearing ice or snow from the window panels, as they are easily scratched and could crack at low temperatures.

Do not put adhesive backed material (badges, stickers etc) onto the canopy window panels - this may result in damage and discolouration.

# Folding & Unfolding the

# **SOFTBACK**

---

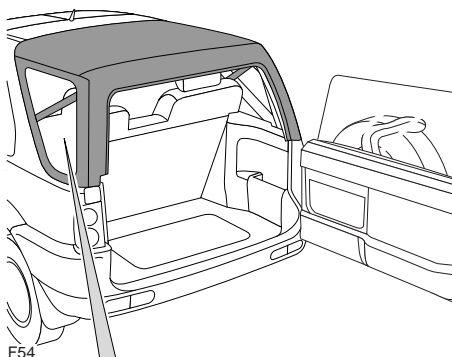


**WARNING!**

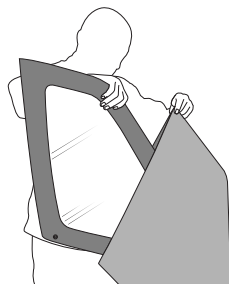
*Avoid folding the softback when wet.*

*Before folding or unfolding, ensure that roof bar cross rails are moved so that softback operation is not obstructed and that the radio aerial is tilted towards the vertical, or removed (see 'Owner's Handbook'), to avoid accidental injury.*

## Folding the Softback

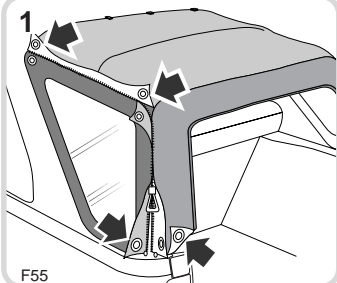


3



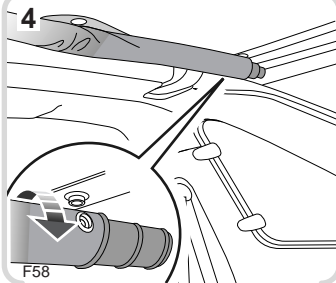
Store side screens in stowage bag.

1



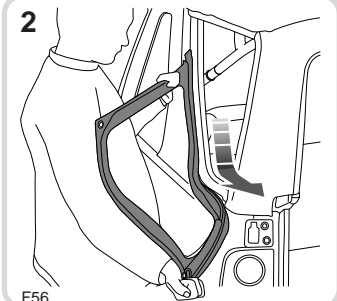
Undo velcro, stud and zip fasteners.

4



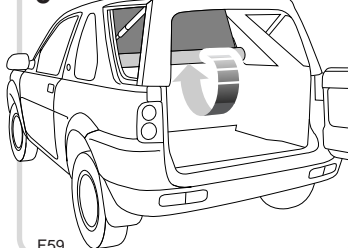
Unfasten tonneau cover.

2



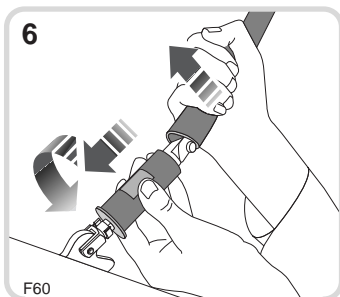
Slide side screen down and out of the retaining channel.

5

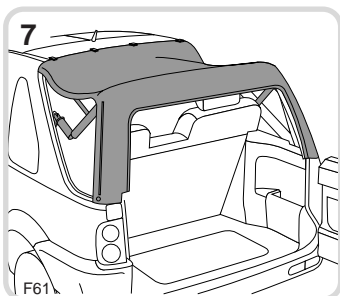


Allow cover to unroll.

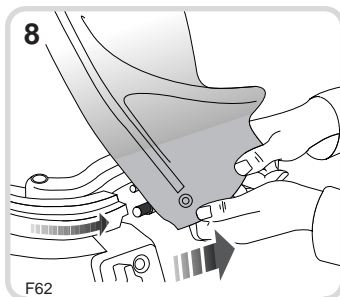
## *Folding the Softback*



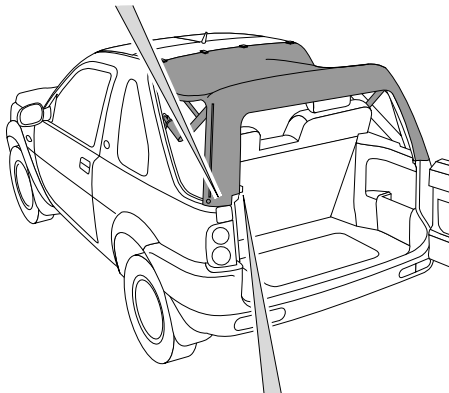
Push and twist to release elbow stay locking collar.



Allow elbow stays to hinge downwards.

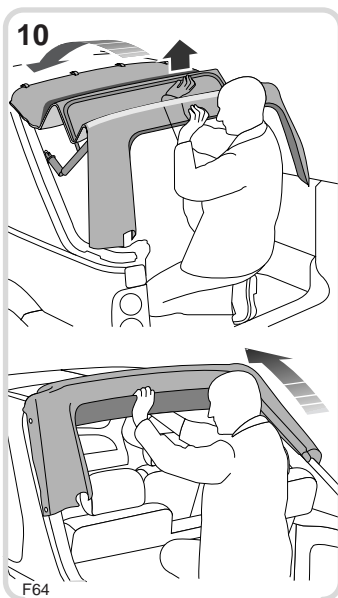


Pull corner post beading out of retaining channel.

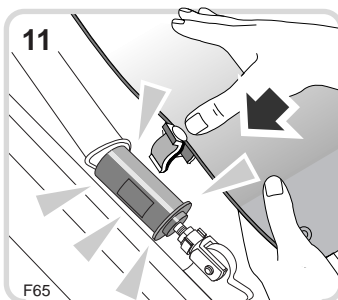


Pull corner posts towards the centre of the vehicle, then rearwards to release.

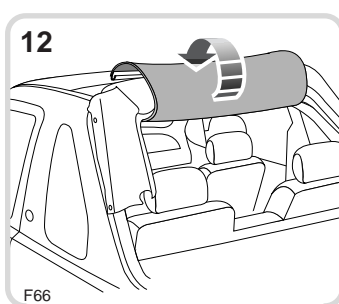
## Folding the Softback



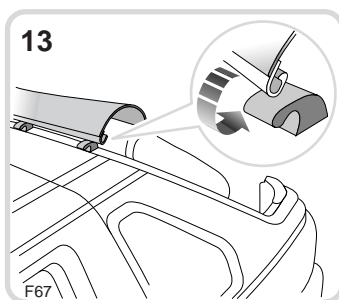
While pushing upwards on the centre roof bow, fold softback forwards.



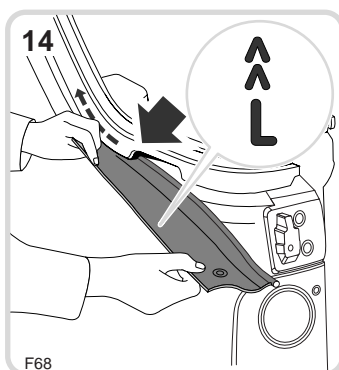
Straighten elbow stay until the locking collar 'snaps' up. Attach corner post clips to locking collar.



Wrap tonneau cover over softback assembly.



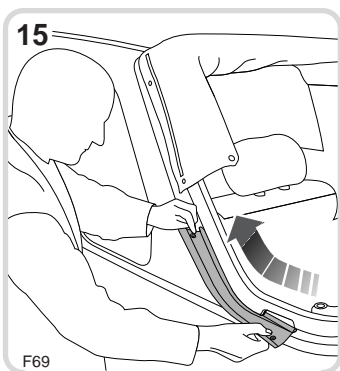
Hook leading edge of tonneau cover over the four hooks.



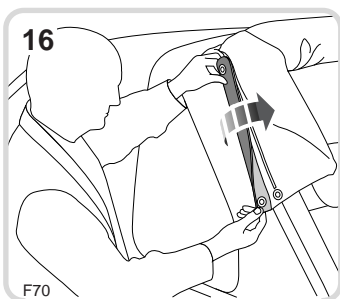
Feed appropriate side cover ('L' or 'R') into the retaining channel in the direction of the chevrons.

## *Folding the Softback*

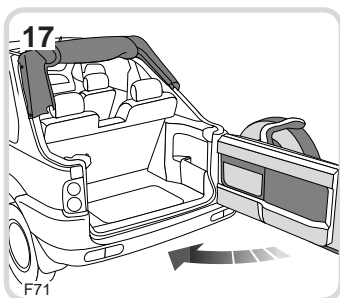
---



Slide the side cover up the retaining channel.

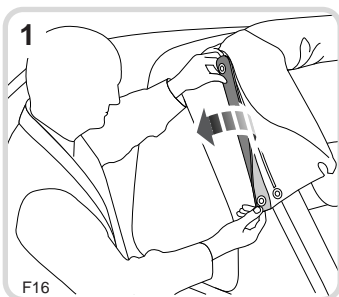
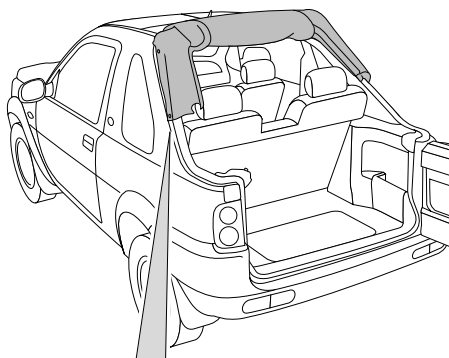


Attach stud and velcro fasteners.

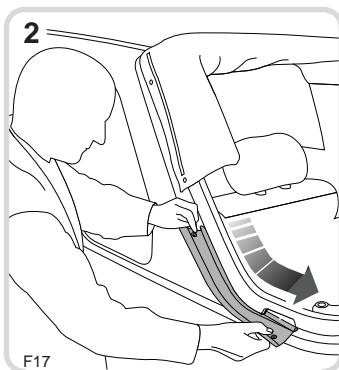


Close taildoor.

# Unfolding the Softback

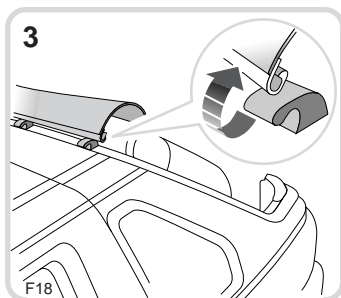


Unfasten the side cover velcro and stud fasteners.

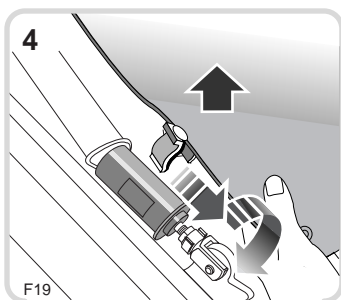


Slide the cover out of the retaining channel.

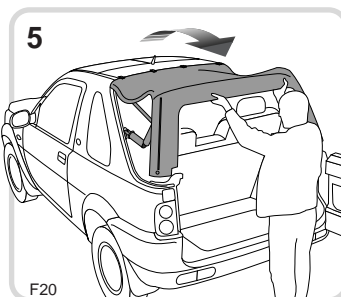
**NOTE:** Store the side covers in the lockable stowage box or side pockets in the loadspace, once the softback is erected.



Unhook tonneau cover.



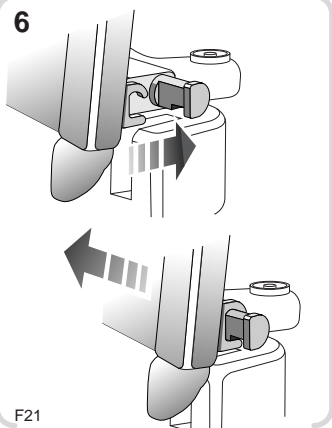
Detach corner post clips. Push and twist to release elbow stay locking collar.



Unfold the softback rearwards.

# Unfolding the Softback

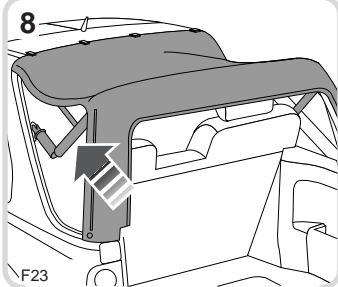
6



F21

Attach corner post catch and push away from the centre of the vehicle to lock.

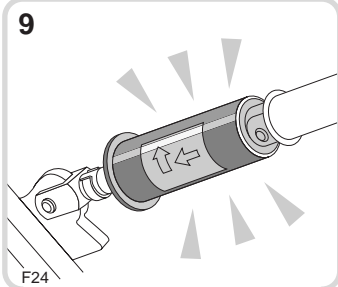
8



F23

Push up to straighten elbow stay.

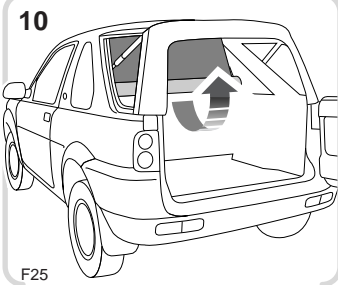
9



F24

Ensure elbow stay locking collar 'snaps' up.

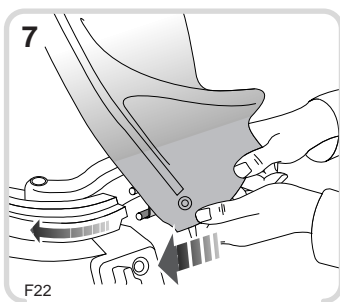
10



F25

Roll up tonneau cover.

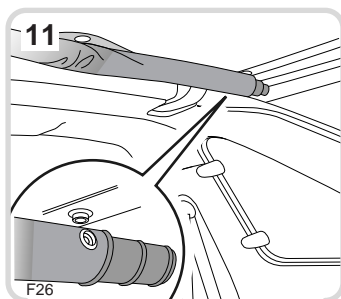
7



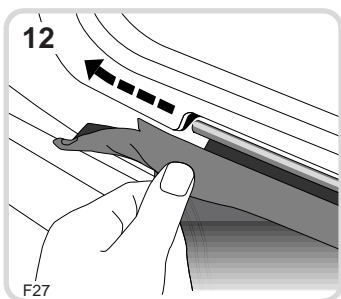
F22

Feed the corner post beading into the retaining channel.

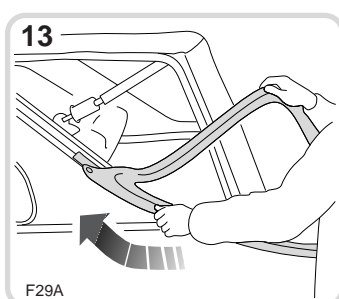
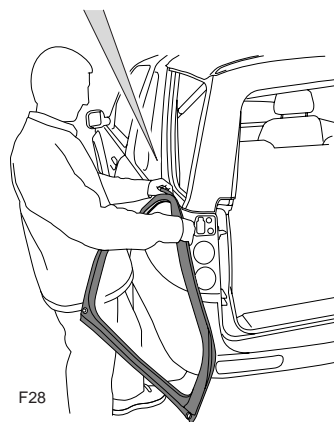
## Unfolding the Softback



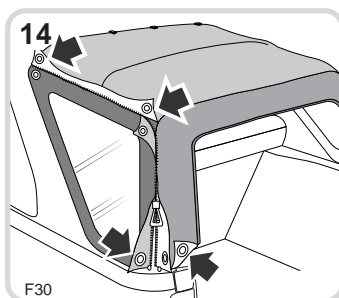
Secure tonneau cover with the three press studs.



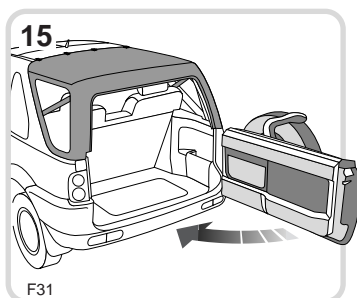
Feed side screen beading into retaining channel.



Slide the side screen up the retaining channel, using a series of short pushes, positioning the hands where shown.



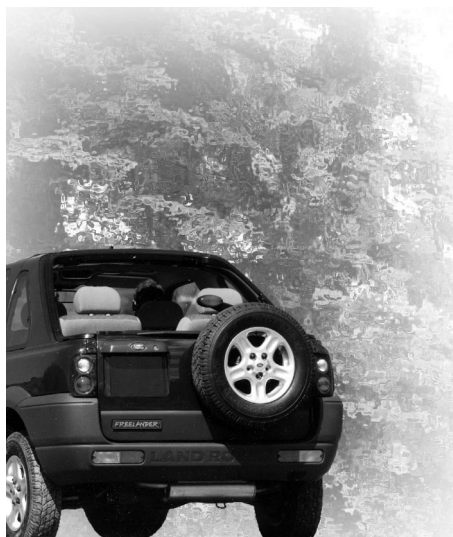
Attach zip, stud and velcro fasteners.



Close taildoor.

# Removing & Fitting the **SOFTBACK**

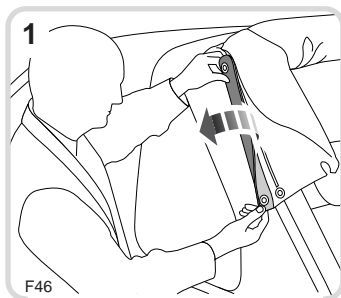
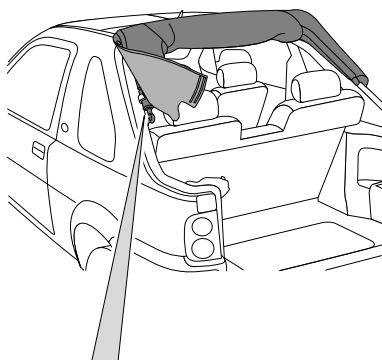
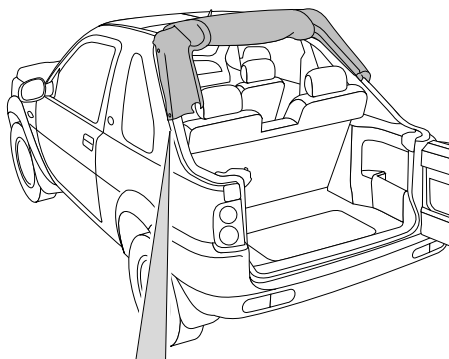
---



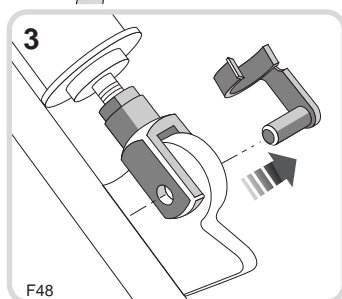
**WARNING!**

*Before removing or fitting the softback, it is recommended that the aerial is either tilted towards the vertical, or removed (see 'Owner's Handbook') to avoid accidental injury.*

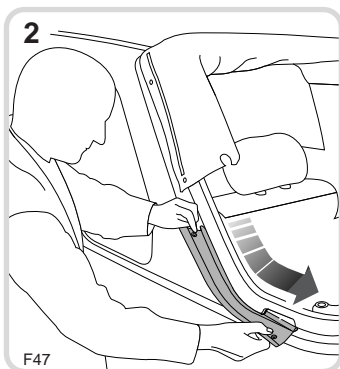
# Removing the Softback



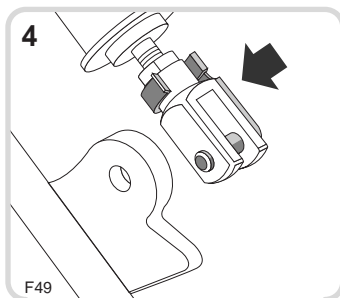
Unfasten side cover velcro and stud fasteners.



Remove clip pin from elbow stay.

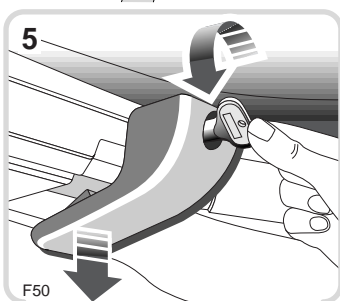
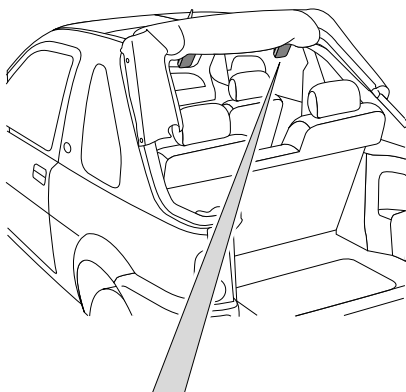


Slide the side cover out of the retaining channel.



Lift elbow stay away from mounting and re-attach clip pin onto stay for safe keeping.

# Removing the Softback

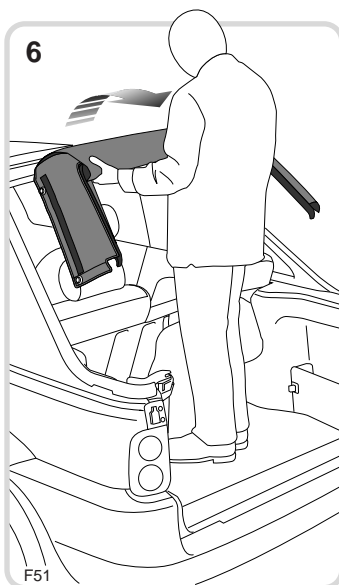


Using the special key provided, loosen header clamp until it can drop down at the front. Do not retighten the clamp.

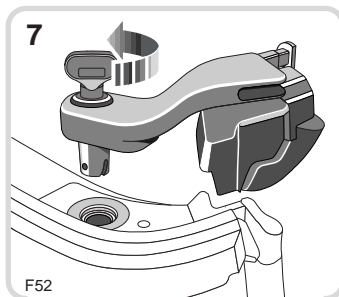
## SIDE COVER STORAGE

When the softback is to be removed for a prolonged period of time (ie. when the hardback is fitted), it is recommended that the side covers are attached to their press stud and velcro fixings on the softback.

To prevent risk of scratching the side screens DO NOT store the side covers in the side screen stowage bag.



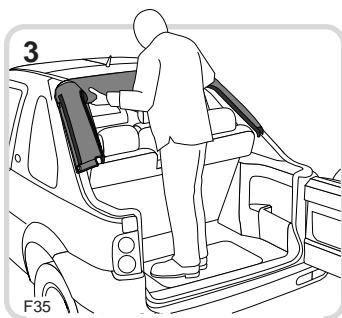
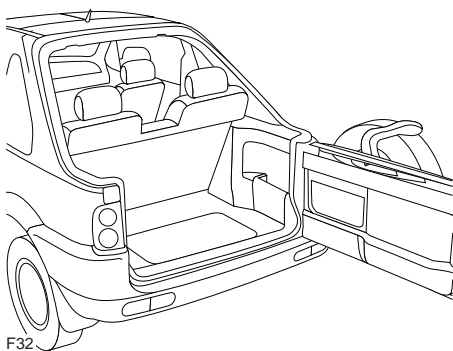
Lift softback from the vehicle and store in a cool, dry place.



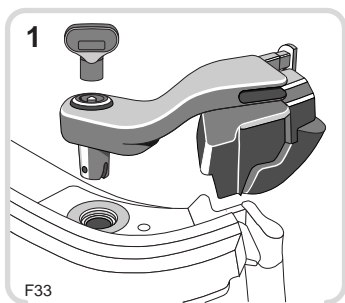
Again using the special key, release and remove corner clamps.

**NOTE:** The special key is located in the main fuse box cover.

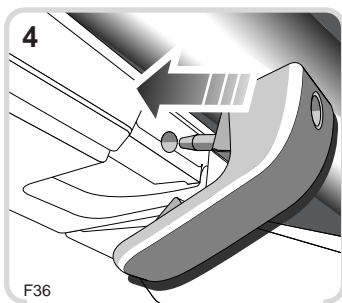
## Fitting the Softback



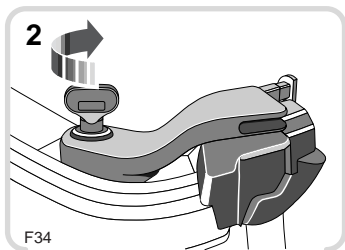
Position softback on vehicle.



Fit corner clamps.

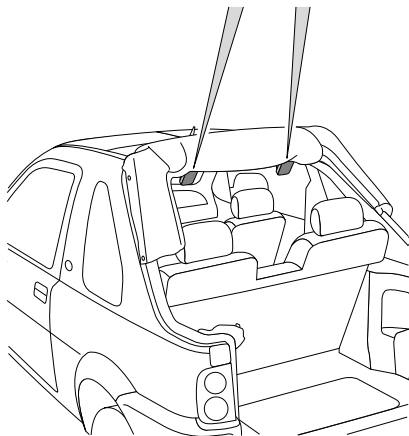


Insert header clamp pins into locating holes in roof.

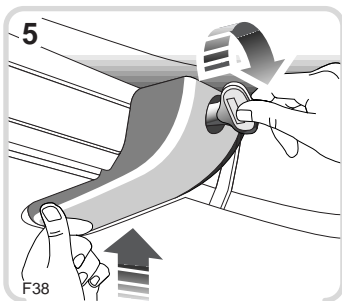


Lock corner clamps in place using special key provided.

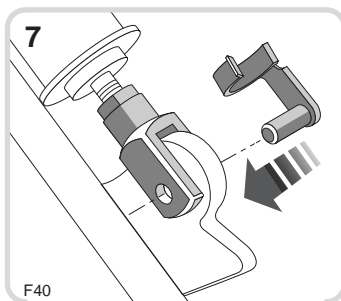
**NOTE:** The special key is located in the main fuse box cover.



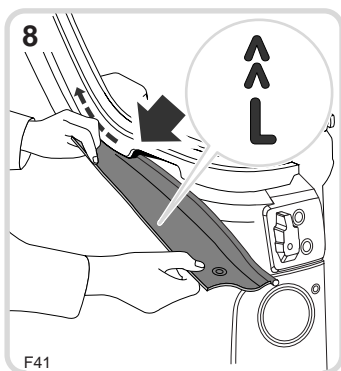
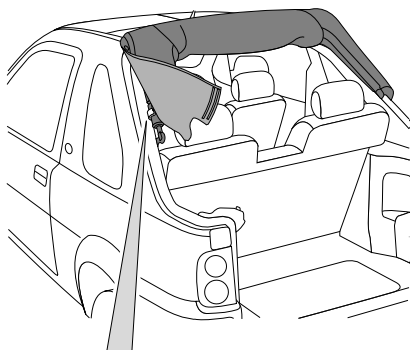
# Fitting the Softback



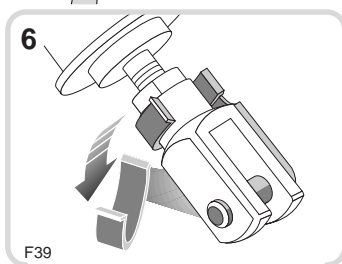
Push front of clamp up and tighten using the special key.



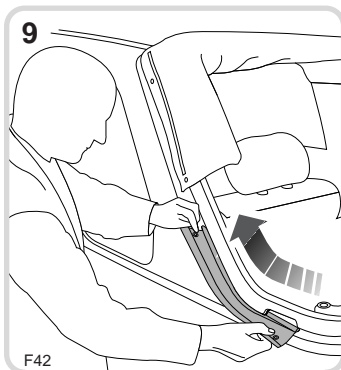
Locate elbow stay on mounting. Insert clip pin.



Feed appropriate ('L' or 'R') side cover beading into retaining channel.



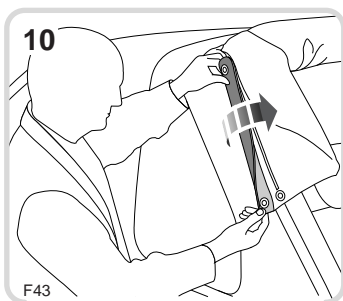
Remove clip pin from elbow stay.



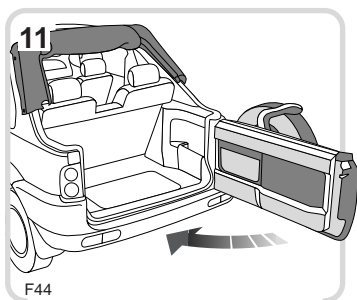
Slide side cover up the retaining channel.

## *Fitting the Softback*

---



Attach stud and velcro fasteners.



Close taildoor.

Removing & Fitting the

# HARDBACK

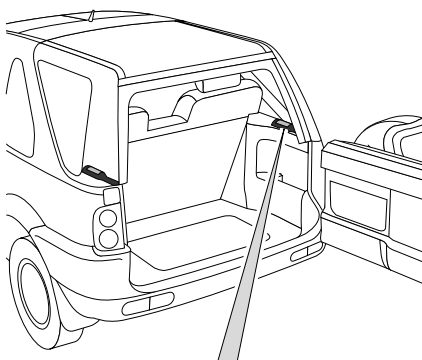
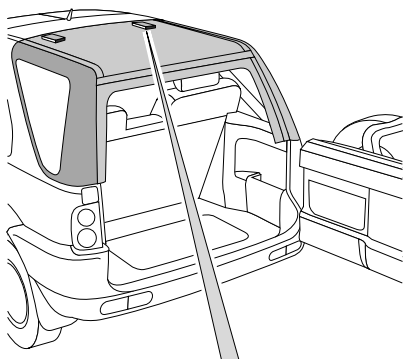
---



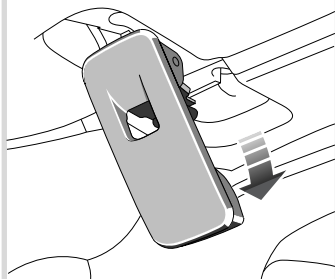
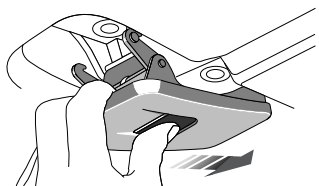
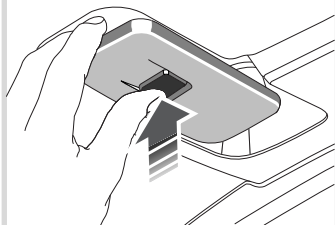
***WARNING!***

*The roof bars MUST be removed, prior to removing or fitting the hardback to the vehicle.*

# Removing the Hardback



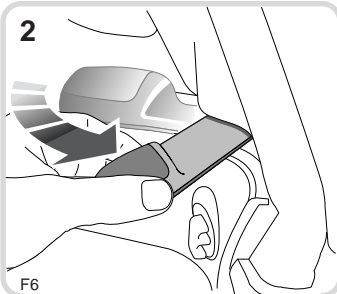
1



F5

Press the button, push the catch forwards and allow to drop.

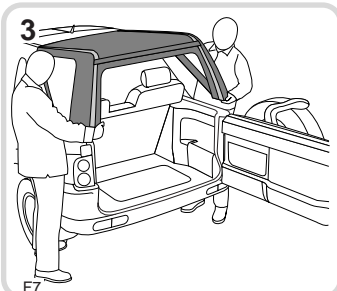
2



F6

Pivot the rear locking levers 90° rearwards.

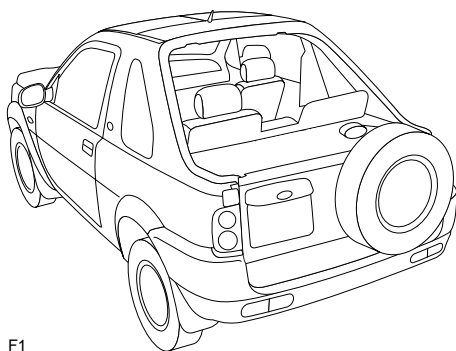
3



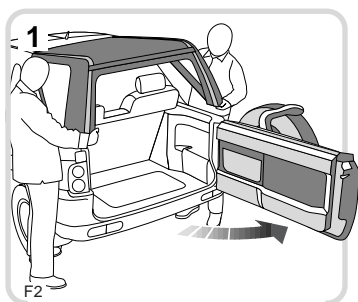
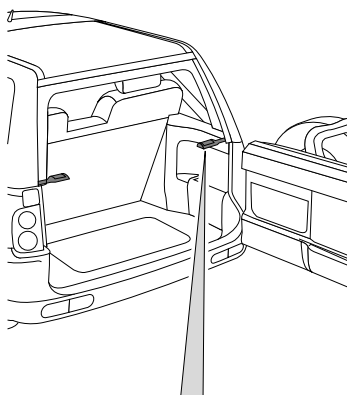
F7

With assistance, lift the hardback (rear first) from the vehicle.

## Fitting the Hardback

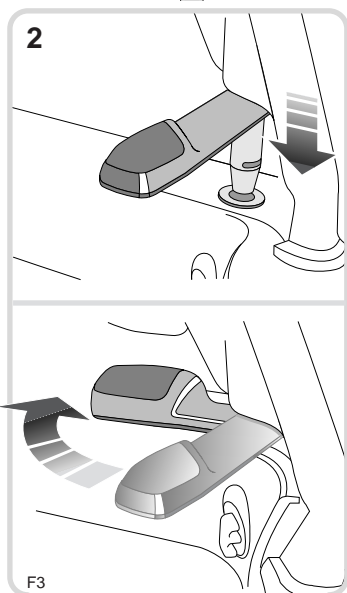


F1



F2

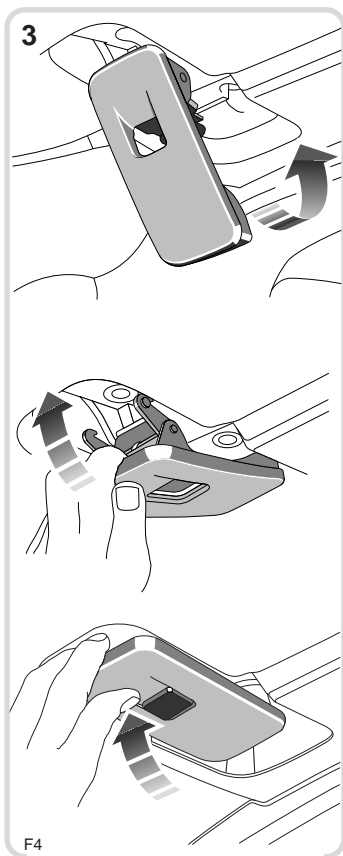
Open taildoor, then with assistance, angle the hardback as shown and position on vehicle.



F3

Locate the rear locking pins and pivot both locking levers 90° forwards.

## Fitting the Hardback



Push the front of the header catch upwards, slide it rearwards and push the rear of the catch upwards until it 'snaps' into position.

### **WARNING!**

*Do not drive the vehicle if the header catches are not secure.*

### **Cleaning the hardback**

Use a soft brush to remove dust and flaking dirt from the hardback, then soak with a mild soap and water solution to soften encrusted dirt and remove stains, prior to washing.

Wash the hardback using a mild soap and water solution, before rinsing with clean lukewarm or cold water. Rinse until all traces of soap are removed from the hardback.

Never use spirit, petrol or chlorine based cleaning agents to clean the hardback or the hardback windows.

Never use wash /wax compounds on the hardback, wax polishes will become ingrained in the textured finish of the hardback.

Never use an automatic car wash, or a high pressure hose.

Do not aim domestic hose jets at seals.

# Removing & Fitting the **ROOF BARS**

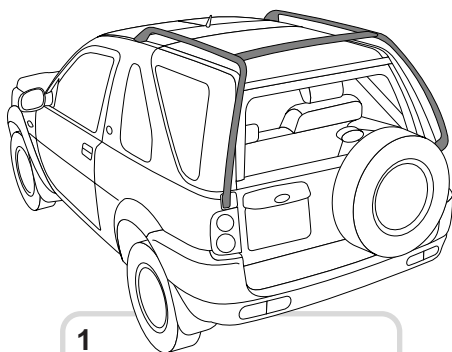
---



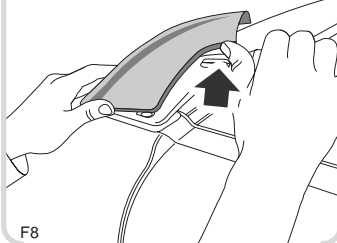
***WARNING!***

*DO NOT remove or adjust any bolt, other than those highlighted in the illustrations on the following pages.*

## Removing the Roof Bars



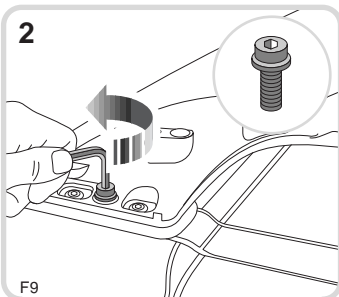
1



F8

Remove front finisher - push upwards as arrowed.

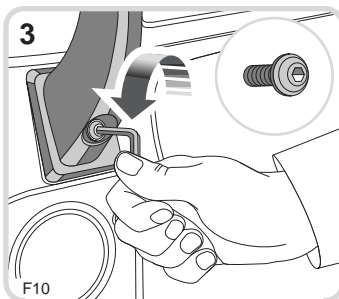
2



F9

Unscrew front fixing bolt, using the Torx key provided in the cross rail stowage bag.

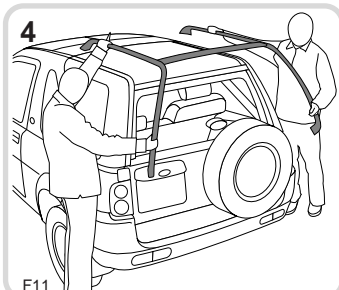
3



F10

Unscrew rear fixing bolt.

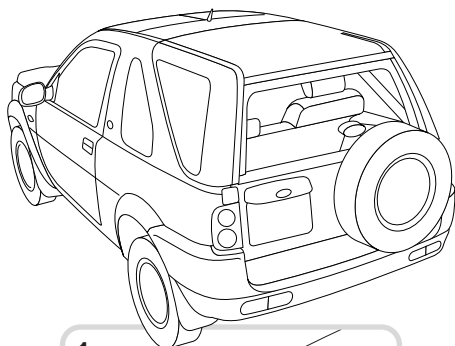
4



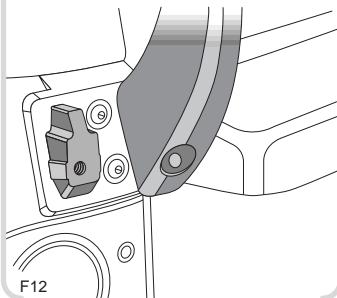
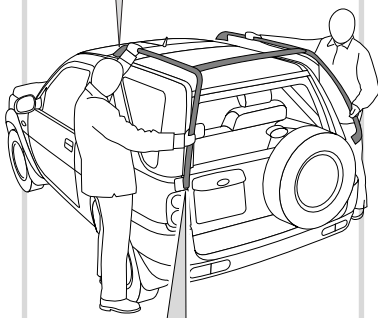
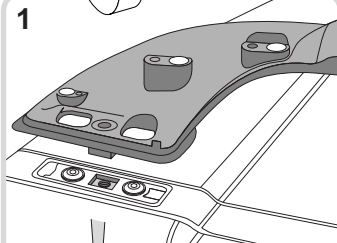
F11

With assistance, lift roof bars up and rearwards off the vehicle.

## Fitting the Roof Bars



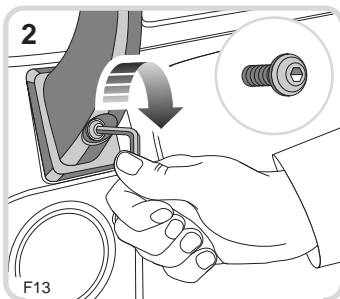
1



F12

With assistance, carefully position the roof bars onto the vehicle.

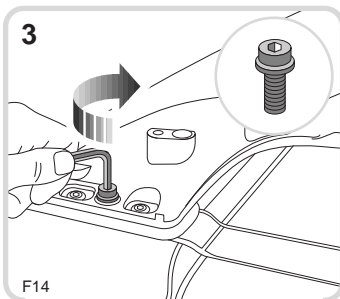
2



F13

Screw correct bolt into rear fixing, using the Torx key provided in the cross rail stowage bag.

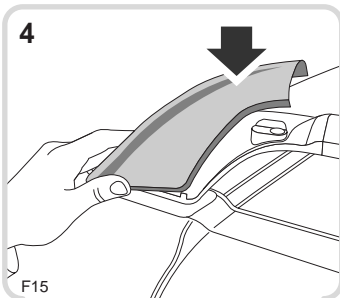
3



F14

Screw correct bolt into front fixing.

4



F15

Align pegs on underside of front finisher and push down to fit.

